

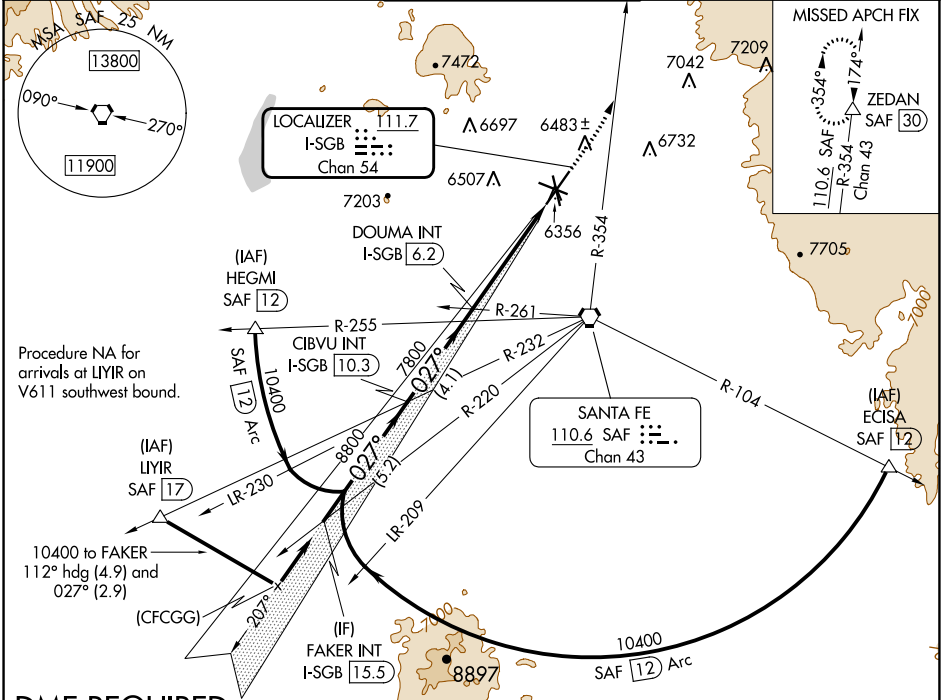
LOC/DME I-SGB <b>111.7</b> Chan <b>54</b>	APP CRS <b>027°</b>	Rwy Idg TDZE Apt Elev	<b>8366</b> <b>6303</b> <b>6349</b>
---	------------------------	-----------------------------	---

# ILS or LOC RWY 2

SANTA FE RGNL (SAF)

**⚠** DME required. MISSED APPROACH: Climb to 7300 then climbing left turn to 11000 on SAF VORTAC R-354 to ZEDAN/SAF 30 DME and hold.

ATIS <b>128.55</b>	ALBUQUERQUE CENTER <b>132.8 346.35</b>	SANTA FE TOWER ★ <b>119.5 (CTAF) 239.3</b>	GND CON <b>121.7</b>	UNICOM <b>122.95</b>
-----------------------	---	---	-------------------------	-------------------------



SW-1, 08 AUG 2024 to 05 SEP 2024

SW-1, 08 AUG 2024 to 05 SEP 2024

## DME REQUIRED

ELEV 6349		TDZE 6303	
REIL Rwy 10, 15, 20 and 33		MIRL Rwy 2-20 and 15-33	
VGSi and ILS glidepath not coincident (VGSi Angle 3.00/TCH 69)			
FAKER INT I-SGB [15.5]	CIBVU INT I-SGB [10.3]	DOUMA INT I-SGB [6.2]	ZEDAN △
10400	8800	7800	7300
GS 3.00° TCH 53		* I-SGB [2.8]	
5.2 NM		4.1 NM	
3.4 NM		1.2 NM	
CATEGORY	A	B	D
S-ILS 2	6503-¾ 200 (200-¾)		
S-LOC 2	6740-1	437 (400-1)	6740-1¼ 437 (400-1¼)
CIRCLING	6800-1	6920-1	7340-3
	451 (500-1)	571 (600-1)	991 (1000-3)
			7660-3
			1311 (1400-3)

