

SPOKANE, WASHINGTON

ILS or LOC RWY 23

LOC I-SKA 110.3	APCH CRS 231°	Rwy Idg 13,899 TDZE 2423 Arprt Elev 2462	AL-553 [USAF]	FAIRCHILD AFB (KSKA)
---------------------------	-------------------------	---	---------------	----------------------

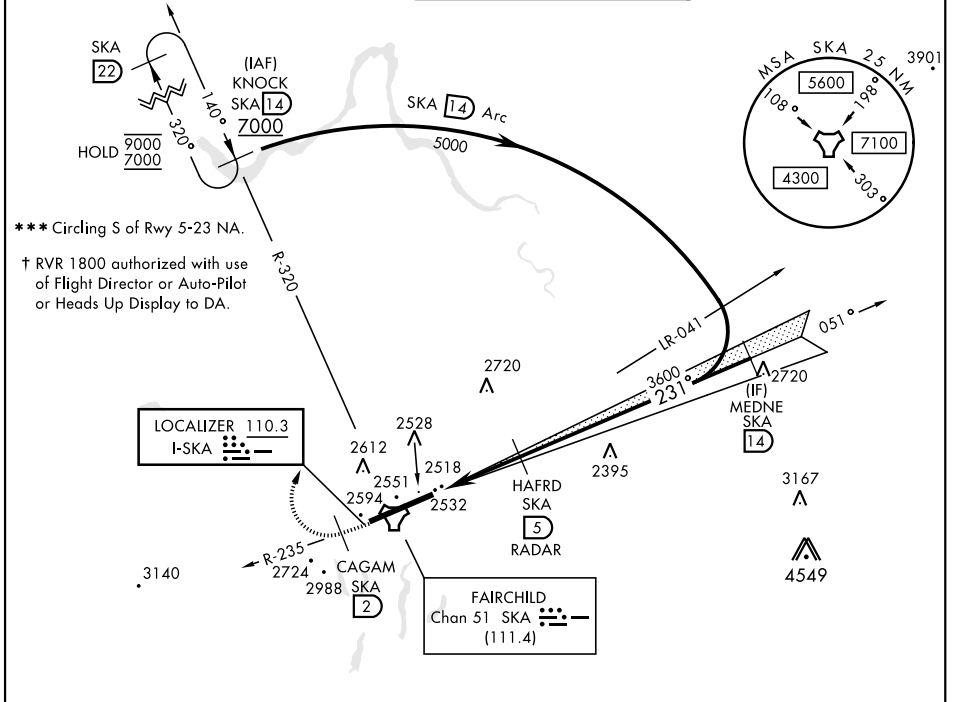
DME or RADAR reqrd for LOC. RADAR reqrd for KNOCK holding.

ALSIF-1

MISSED APPROACH: Climb to 7000 via SKA R-235. At CAGUM, turn right heading 005° to intcp SKA R-320 to KNOCK and hold, cont climb in hold to 7000.

*** When ALS inop, increase RVR to 40 and vis to 3/4 mile.
** When ALS inop, increase RVR to 55 and vis to 1 mile.

ATIS 257.625	SPOKANE APP CON 123.75 282.25 (208° - 028°) 133.35 263.0 (029° - 207°)	TOWER 120.35 233.7	GND CON 123.6 275.8
------------------------	--	------------------------------	-------------------------------

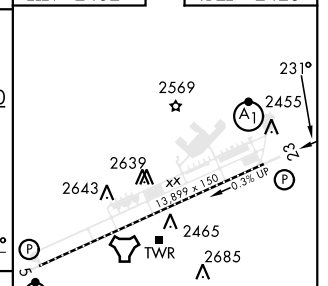
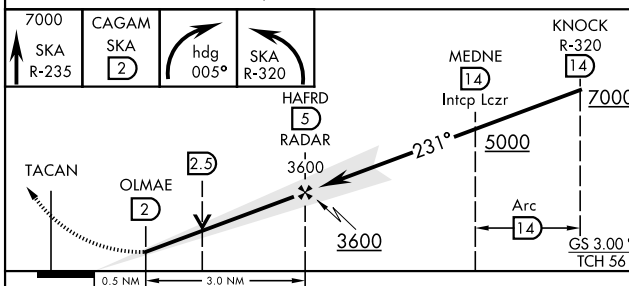


NW-1, 08 AUG 2024 to 05 SEP 2024

NW-1, 08 AUG 2024 to 05 SEP 2024

EMERG SAFE ALT 100 NM 10,900

ELEV 2462	TDZE 2423
-----------	-----------



CATEGORY	A	B	C	D	E
S-ILS 23 *†	2623/24		200	(200-1/2)	
S-LOC 23 **	2800/24	377 (400-1/2)	2800/35	377	(400-5/8)
CIRCLING ***	2900-1 438 (500-1)	2920-1 458 (500-1)	3040-1 1/2 578 (600-1 1/2)	3040-2 578 (600-2)	3600-3 1138 (1200-3)
	HIRL Rwy 5-23 TDZL/CL Rwy 5				
FAF to MAP 3.0 NM					
Knots	60	90	120	150	180
Min:Sec	3:00	2:00	1:30	1:12	1:00

SPOKANE, WASHINGTON 47°37'N-117°39'W FAIRCHILD AFB (KSKA)

Amdt 4 03NOV22

ILS or LOC RWY 23