

NDB-B

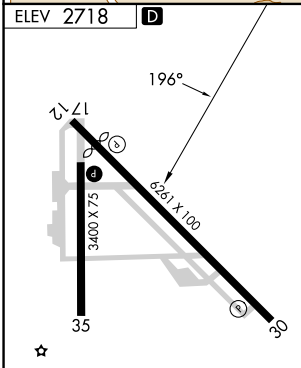
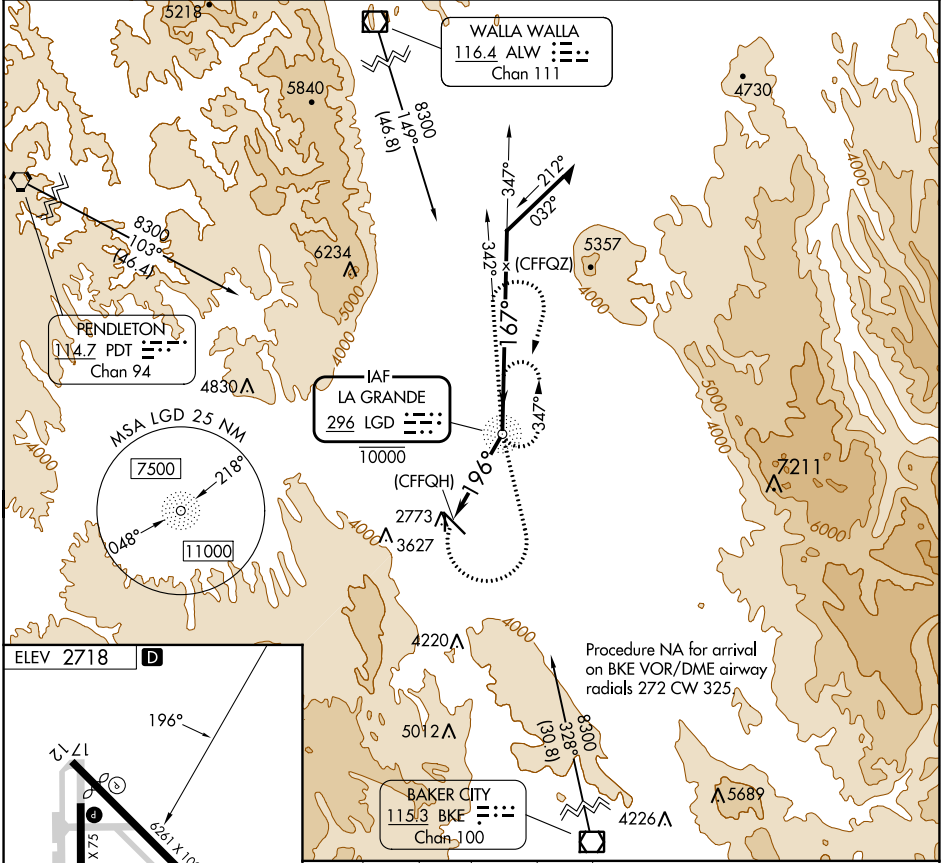
LA GRANDE/UNION COUNTY (LGD)

NDB LGD 296	APP CRS 196°	Rwy Idg TDZE Apt Elev N/A N/A 2718
-----------------------	------------------------	--

NA Circling NA for Cat C southwest of Rwy 12-30.
-17°C

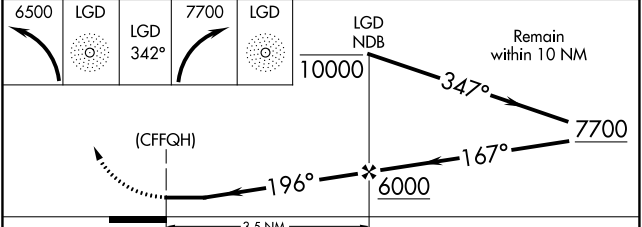
MISSED APPROACH: Climbing left turn to 6500 direct LGD NDB and on bearing 342° from LGD NDB, then climbing right turn to 7700 direct LGD NDB and hold.

AWOS-3PT 135.075	SEATTLE CENTER 132.6 269.35	UNICOM 122.8 (CTAF)
----------------------------	---------------------------------------	-------------------------------



REIL Rwy 30
 REIL Rwys 17 and 35
 MIRL Rwys 12-30 and 17-35

FAF to MAP 3.5 NM					
Knots	60	90	120	150	180
Min:Sec	3:30	2:20	1:45	1:24	1:10



CATEGORY	A	B	C	D
CIRCLING	4600-1¼ 1882 (1900-1¼)	4600-1½ 1882 (1900-1½)	4600-3 1882 (1900-3)	NA

NW-1, 08 AUG 2024 to 05 SEP 2024

NW-1, 08 AUG 2024 to 05 SEP 2024