

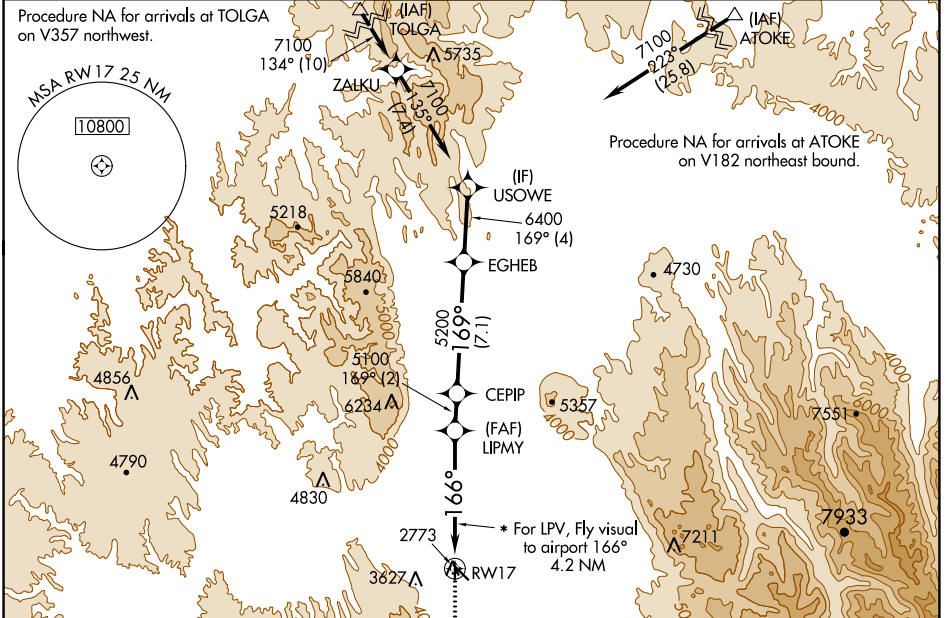
WAAS CH <b>66000</b> <b>W17A</b>	APP CRS <b>166°</b>	Rwy Idg <b>3400</b> TDZE <b>2714</b> Apt Elev <b>2718</b>
--	------------------------	---

# RNAV (GPS) RWY 17

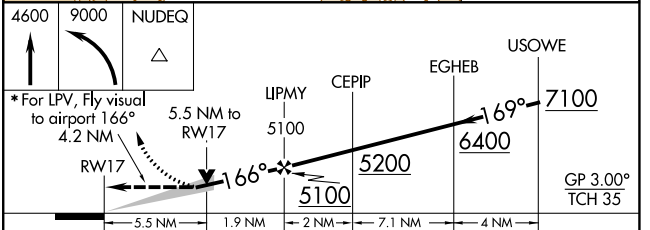
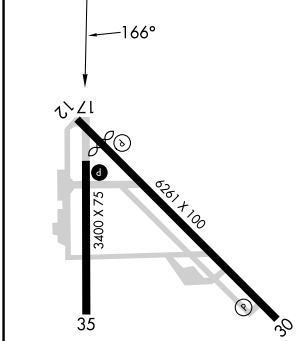
LA GRANDE/UNION COUNTY (L.G.D)

RNP APCH - GPS.		MISSED APPROACH: Climb to 4600 then climbing left turn to 9000 direct NUDEQ and hold, continue climb-in-hold to 9000.
<p>▼ Circling NA for Cats C and D southwest of Rwy 12-30.</p> <p>▲ NA Fly visual to airport authorized during day only.</p> <p>☁ -17°C * Day visibility minimums 3 SM.</p>		

AWOS-3PT <b>135.075</b>	SEATTLE CENTER <b>132.6 269.35</b>	UNICOM <b>122.8 (CTAF) 0</b>
----------------------------	---------------------------------------	---------------------------------



ELEV 2718	<b>D</b>	TDZE 2714
-----------	----------	-----------



CATEGORY	A	B	C	D
LPV DA*	4112-5 1398 (1400-5)			
LNAV MDA	4540-1¼ 1826 (1900-1¼)	4540-1½ 1826 (1900-1½)	4540-3 1826 (1900-3)	
<b>C</b> CIRCLING	4540-1¼ 1822 (1900-1¼)	4540-1½ 1822 (1900-1½)	4540-3 1822 (1900-3)	

REIL Rwy 30  
REIL Rwy 17 and 35  
MIRL Rwy 12-30 and 17-35

NW-1, 08 AUG 2024 to 05 SEP 2024

NW-1, 08 AUG 2024 to 05 SEP 2024