

MILTON, FLORIDA

ILS Z or RNAV (GPS) RWY 14

LOC/DME I-NSE 111.75 Chan 54(Y)	APCH CRS 139°	Rwy Ldg TDZE Arpt Elev 6001 199 199
---	-------------------------	---

[USN]

WHITING FLD NAS - NORTH (KNSE)

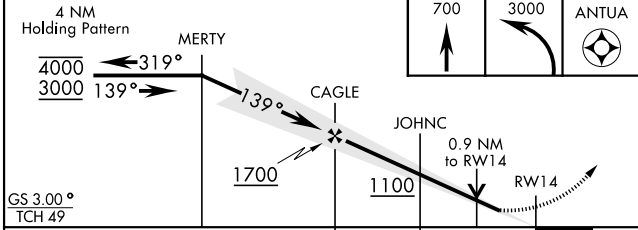
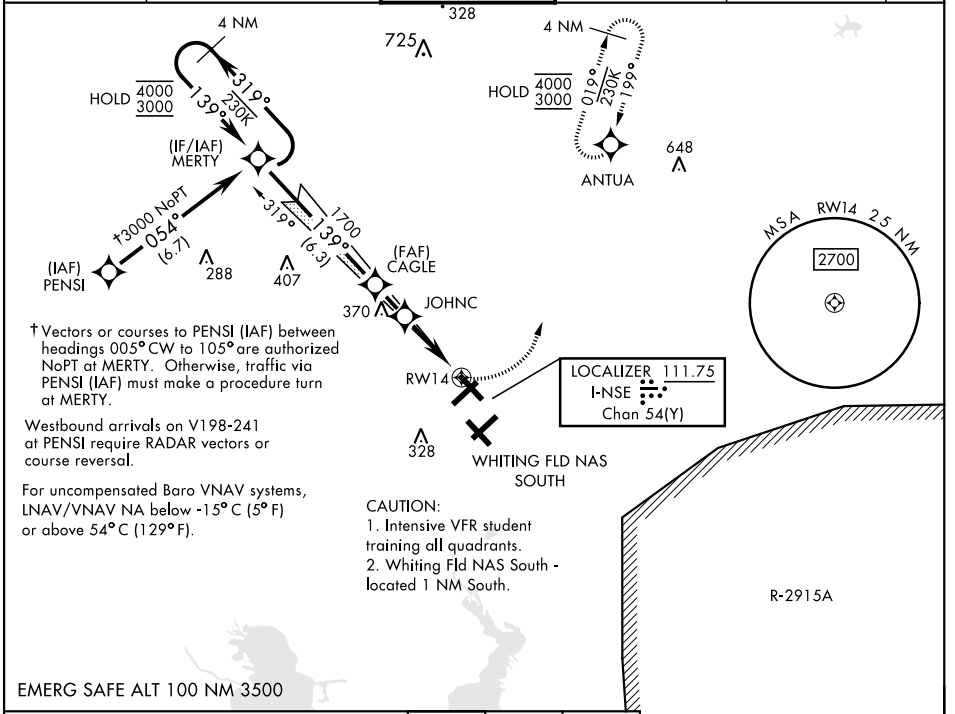
RNAV1-GPS for ILS.
RNP APCH for LNAV/VNAV, LNAV.



MISSED APPROACH: Climb to 700, then climbing left turn to 3000 direct to ANTUA and hold. Continue climb in hold. Contact Pensacola APP CON.

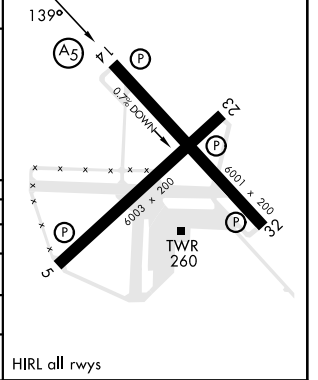
- * When ALS inop, increase vis to 3/4 mile.
- ** When ALS inop, increase vis to 1 mile.
- *** Circling not authorized S of Rwy 5 and 32.

ATIS ★ 290.325	PENSACOLA APP CON 127.35 278.8	NORTH WHITING TOWER ★ 121.4 306.925	GND CON 251.15	CLNC DEL 257.775	ASR
--------------------------	--	---	--------------------------	----------------------------	-----



ELEV	199	TDZE	199
------	-----	------	-----

CATEGORY	A	B	C	D
S-ILS 14*	399-1/2	200	(200-1/2)	
LNAV/VNAV DA*	449-1/2	250	(300-1/2)	
LNAV MDA**	520-1/2	321	(400-1/2)	
CIRCLING***	560-1 361 (400-1)	660-1 461 (500-1)	660-1/2 461 (500-1/2)	760-2 561 (600-2)



MILTON, FLORIDA
Amdt 6 18APR24

30°43'N-87°01'W

WHITING FLD NAS - NORTH (KNSE)

ILS Z or RNAV (GPS) RWY 14

SE-3, 08 AUG 2024 to 05 SEP 2024

SE-3, 08 AUG 2024 to 05 SEP 2024