

MILTON, FLORIDA

TACAN RWY 5

TACAN NSE Chan 70	APCH CRS 052°	Rwy Idg TDZE Arpt Elev 6003 180 199
-----------------------------	-------------------------	---

[USN]

WHITING FLD NAS - NORTH (KNSE)

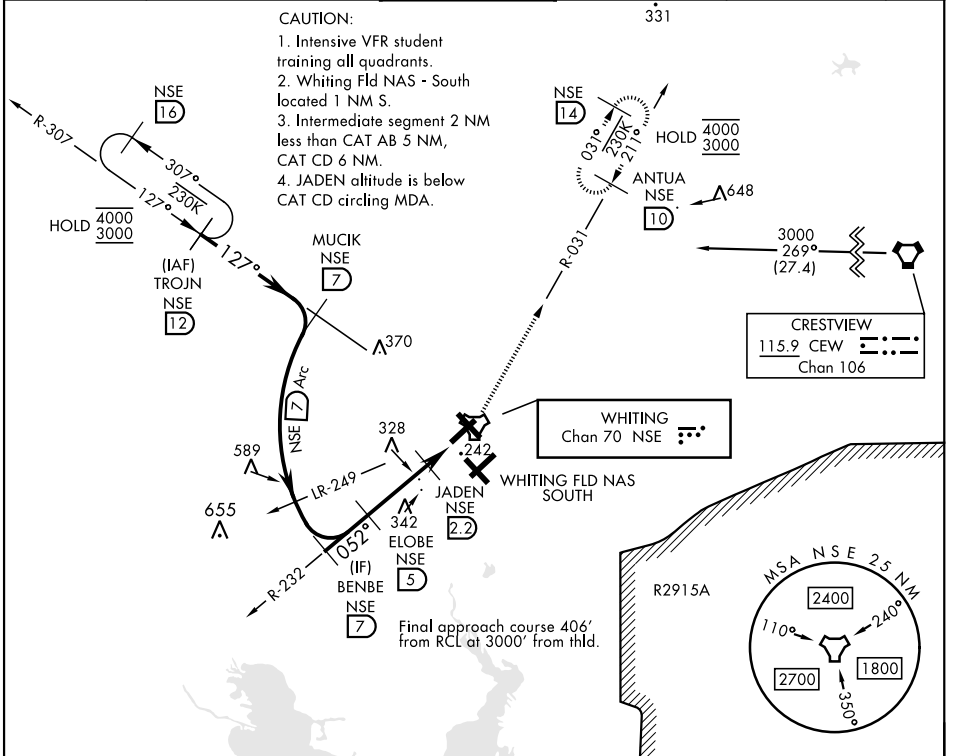
▼ * Circling not authorized S of Rws 5 and 32.

MISSED APPROACH: Climb to 3000 via R-232 to NSE TACAN. Then via NSE TACAN R-031 to ANTUA and hold. Continue climb in hold. Contact Pensacola APP CON.

ATIS ★ 290.325	PENSACOLA APP CON 127.35 278.8	NORTH WHITING TOWER ★ 121.4 306.925	GND CON 251.15	CLNC DEL 257.775	ASR
--------------------------	--	--	--------------------------	----------------------------	-----

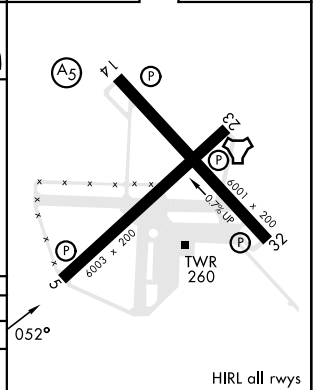
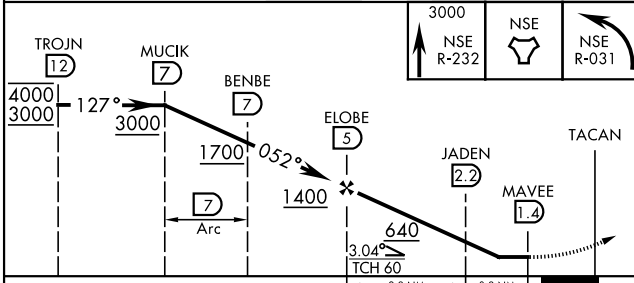
CAUTION:

1. Intensive VFR student training all quadrants.
2. Whiting Fld NAS - South located 1 NM S.
3. Intermediate segment 2 NM less than CAT AB 5 NM, CAT CD 6 NM.
4. JADEN altitude is below CAT CD circling MDA.



EMERG SAFE ALT 100 NM 3500

ELEV 199	TDZE 180
----------	----------



CATEGORY	A	B	C	D
S-5		500-1	320 (400-1)	
CIRCLING*	560-1 361 (400-1)	660-1 461 (500-1)	660-1½ 461 (500-1½)	760-2 561 (600-2)

MILTON, FLORIDA
Amdt 5 28DEC23

30°43'N-87°01'W

WHITING FLD NAS - NORTH (KNSE)

TACAN RWY 5

SE-3, 08 AUG 2024 TO 05 SEP 2024

SE-3, 08 AUG 2024 TO 05 SEP 2024

HIRL all rwys