


TACAN IAG Chan 47 (111.0)	APP CRS 286°	Rwy Idg TDZE Apt Elev	9129 588 592
--	------------------------	-----------------------------	---

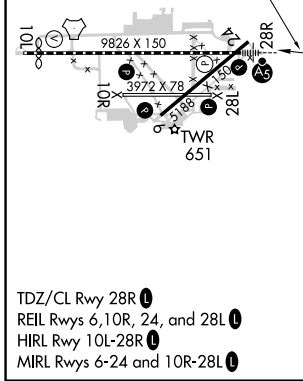
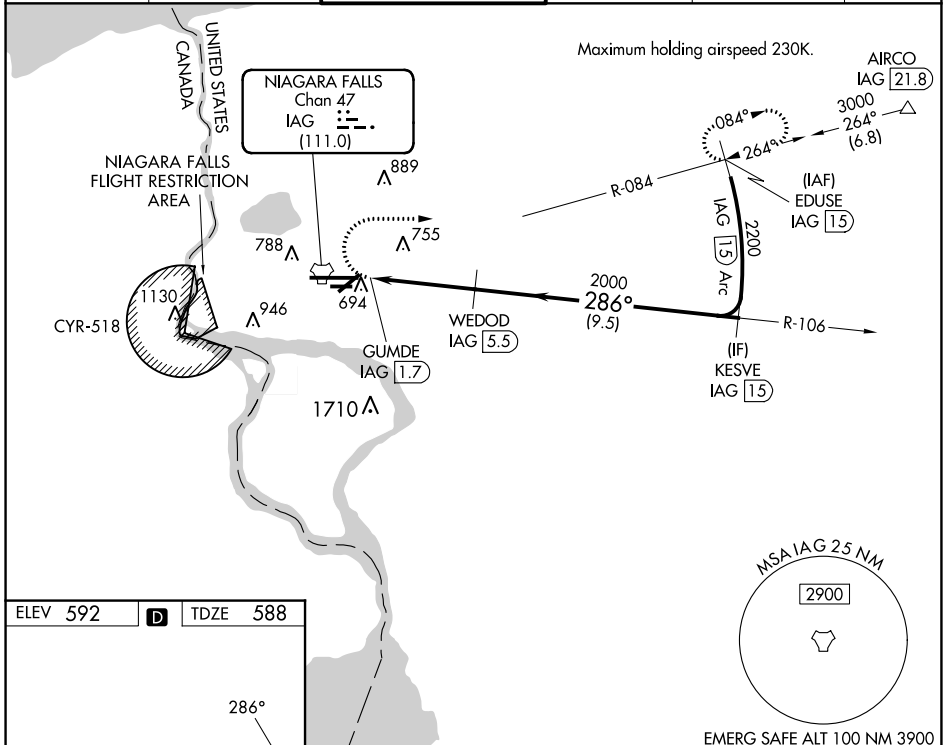
TACAN RWY 28R

NIAGARA FALLS INTL (IAG)

▼ When local altimeter setting not received, use Buffalo Niagara Intl altimeter setting; increase all MDA 60 feet and S-28R visibility Cat C, D and E to RVR 4500 and Circling Cat C, D and E visibility ¼ SM. Circling NA for Cat E south of Rwy 10L-28R.
 ▲ For inop MALSR, increase S-28R Cat A/B visibility to RVR 5000 and Cat C/D/E to RVR 6000. Rwy 28R helicopter visibility reduction below ¾ SM NA. Rwy 6, 10R, 24, 28L helicopter visibility reduction below 1 SM NA. Circling Rwy 6, 10R, 24, 28L NA at night.

MALSRL

 MISSED APPROACH:
 Climbing right turn to 3000 on heading 100° and IAG R-084 to EDUSE/IAG 15 DME and hold.

ATIS 120.8 269.4	BUFFALO APP CON 126.5 317.6	NIAGARA TOWER★ 118.5 (CTAF) 349.0	GND CON 125.3 275.8	CLNC DEL 119.25 251.1	UNICOM 122.95
----------------------------	---------------------------------------	---	-------------------------------	---------------------------------	-------------------------



ELEV 592	D	TDZE 588			
3000	hdg 100°	IAG R-084	EDUSE IAG 15	VGSI and descent angles not coincident (VGSI Angle 2.50/TCH 67).	KESVE IAG 15
2000	IAG TACAN	GUMDE IAG 1.7	WEDOD IAG 5.5	TCH 55	2200
0.5 NM		3.8 NM		9.5 NM	
CATEGORY	A	B	C	D	E
S-28R	1000/40 412 (500-¾)				
CIRCLING	1100-1	508 (600-1)	1280-2 688 (700-2)	1360-2½ 768 (800-2½)	1360-2¾ 768 (800-2¾)

NE-2, 08 AUG 2024 to 05 SEP 2024

NE-2, 08 AUG 2024 to 05 SEP 2024