

LOC/DME I-BDR 110.7 Chan 44	APP CRS 060°	Rwy Idg 4677
		TDZE 7
		Apt Elev 9

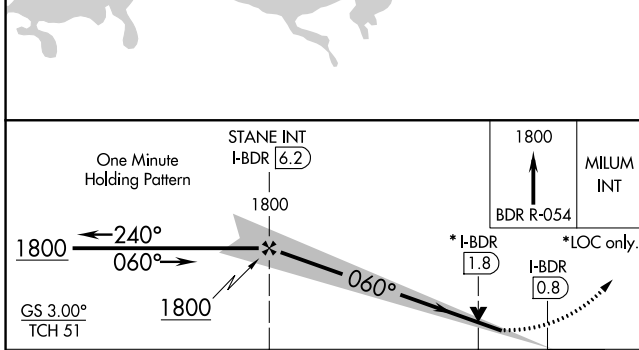
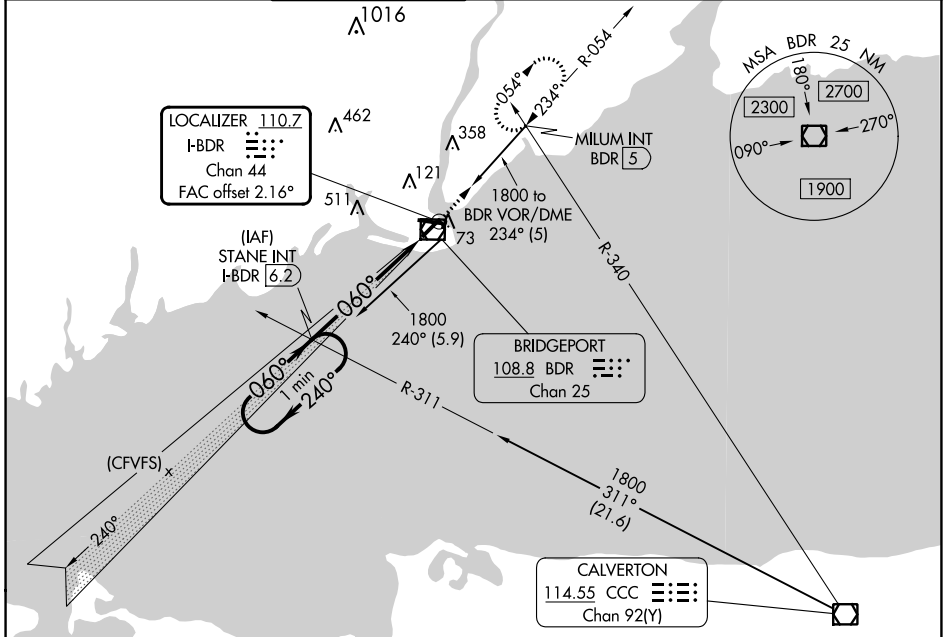
ILS or LOC RWY 6

BRIDGEPORT/SIKORSKY (BDR)

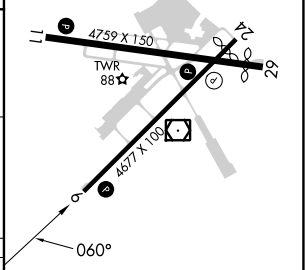
Autopilot coupled approach NA below 350.
⚠ Circling Rwy 11, 29 NA at night.
Rwy 6 helicopter visibility reduction below ¾ SM NA.

MISSED APPROACH: Climb to 1800 on the BDR VOR/DME R-054 to MILUM INT and hold.

ATIS 119.15	NEW YORK APP CON 124.075 343.65	BRIDGEPORT TOWER* 120.9 (CTAF) 257.8	GND CON 121.75 257.8	CLNC DEL 121.75	CLNC DEL 124.075 (When twr closed)	UNICOM 123.0
-----------------------	---	---	--------------------------------	---------------------------	---	------------------------



ELEV	9	D	TDZE	7
------	---	---	------	---



CATEGORY	A	B	C	D
S-ILS 6		257-¾	250 (300-¾)	
S-LOC 6		380-1	373 (400-1)	
C CIRCLING	480-1 471 (500-1)	620-1 611 (700-1)	820-2½ 811 (900-2½)	820-2¾ 811 (900-2¾)

REIL Rws 6, 11, 24, and 29	1
HIRL Rws 6-24 and 11-29	1
FAF to MAP 5.5 NM	
Knots	60 90 120 150 180
Min:Sec	5:30 3:40 2:45 2:12 1:50

NE-1, 08 AUG 2024 to 05 SEP 2024

NE-1, 08 AUG 2024 to 05 SEP 2024