

WAAS CH 78140 W06A	APP CRS 060°	Rwy Idg TDZE Apt Elev	4677 7 9
--	------------------------	-----------------------------	-------------------------------------

RNAV (GPS) RWY 6

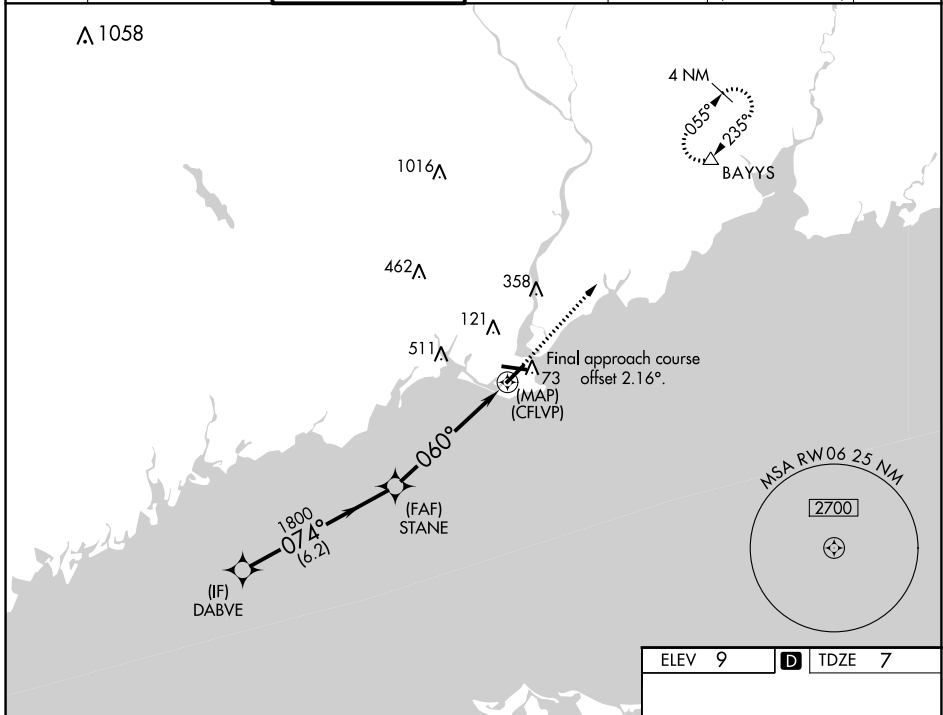
BRIDGEPORT/SIKORSKY (BDR)

RNP APCH - GPS.

▼ For uncompensated Baro-VNAV systems, LNAV/VNAV NA below -15°C or above 54°C.
▲ Circling Rwy 11, 29 NA at night. Rwy 6 helicopter visibility reduction below 3/4 SM NA.

MISSED APPROACH: Climb to 2600 direct BAYYS and hold.

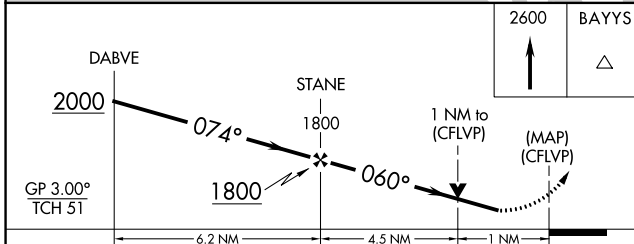
ATIS 119.15	NEW YORK APP CON 124.075 343.65	BRIDGEPORT TOWER* 120.9 (CTAF) 257.8	GND CON 121.75 257.8	CLNC DEL 121.75	CLNC DEL 124.075 (When twr closed)	UNICOM 123.0
-----------------------	---	---	--------------------------------	---------------------------	---	------------------------



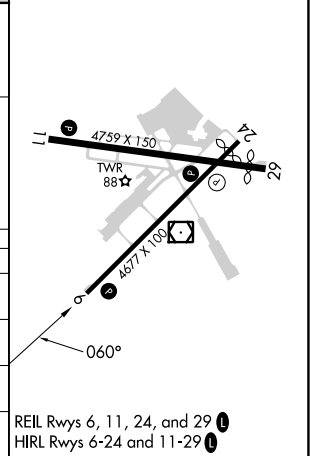
NE-1, 08 AUG 2024 to 05 SEP 2024

NE-1, 08 AUG 2024 to 05 SEP 2024

ELEV 9	D TDZE 7
---------------	------------------------



CATEGORY	A	B	C	D
LPV DA		257-3/4	250 (300-3/4)	
LNAV/VNAV DA		284-7/8	277 (300-7/8)	
LNAV MDA		380-1	373 (400-1)	
C CIRCLING	480-1 471 (500-1)	620-1 611 (700-1)	820-2 1/2 811 (900-2 1/2)	820-2 3/4 811 (900-2 3/4)



REIL Rwys 6, 11, 24, and 29 **Ⓛ**
HIRL Rwys 6-24 and 11-29 **Ⓛ**