

WAAS CH 53322 W05A	APP CRS 053°	Rwy Idg TDZE Apt Elev	5001 144 148
--	------------------------	-----------------------------	---

RNAV (GPS) RWY 5

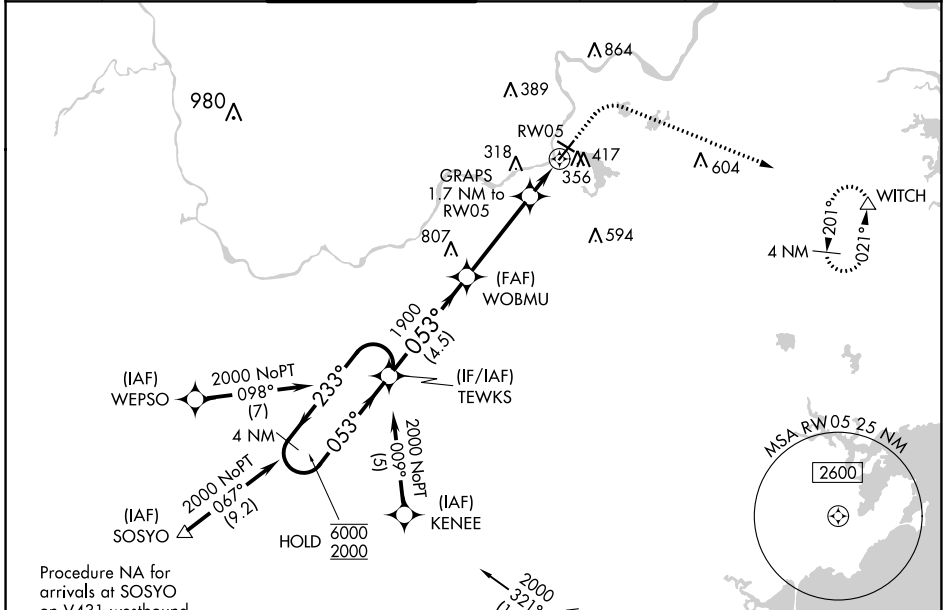
LAWRENCE MUNI (LWM)

RNP APCH.

⚠ Circling Rwy 32 NA at night. For uncompensated Baro-VNAV systems, LNAV/VNAV NA below -19°C or above 54°C.

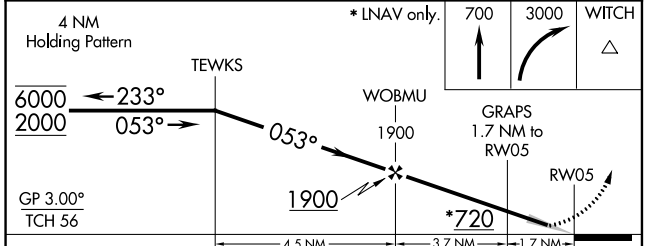
MISSED APPROACH: Climb to 700 then climbing right turn to 3000 direct WITCH and hold, continue climb-in-hold to 3000.

ATIS 126.75	BOSTON APP CON 124.4 279.6	LAWRENCE TOWER ★ 119.25 (CTAF) 0	GND CON 124.3	CLNC DEL 124.3	CLNC DEL 126.15 (When twr closed)	UNICOM 122.8
-----------------------	--------------------------------------	--	-------------------------	--------------------------	--	------------------------



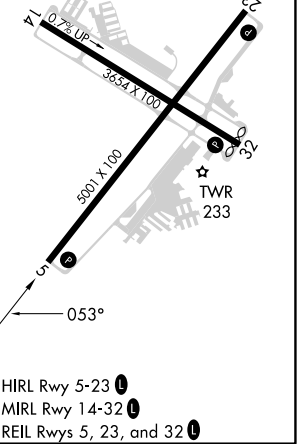
Procedure NA for arrivals at SOSYO on V431 westbound.

Procedure NA for arrival on BOS VOR/DME airway radials 240 CW 030.



CATEGORY	A	B	C	D
LPV DA		344-3/4	200 (200-3/4)	
LNAV/VNAV DA		604-13/8	460 (500-13/8)	
LNAV MDA	600-1	456 (500-1)	600-13/8	456 (500-13/8)
C CIRCLING	740-1	592 (600-1)	840-2 692 (700-2)	1220-3 1072 (1100-3)

ELEV 148	TDZE 144
----------	----------



LAWRENCE MUNI (LWM)
RNAV (GPS) RWY 5

HIRL Rwy 5-23 **0**
MIRL Rwy 14-32 **0**
REIL Rws 5, 23, and 32 **0**

NE-1, 08 AUG 2024 to 05 SEP 2024

NE-1, 08 AUG 2024 to 05 SEP 2024