

WAAS CH 65838 W12A	APP CRS 125°	Rwy Idg 5499 TDZE 3647 Apt Elev 3657
--	------------------------	---

RNAV (GPS) RWY 12

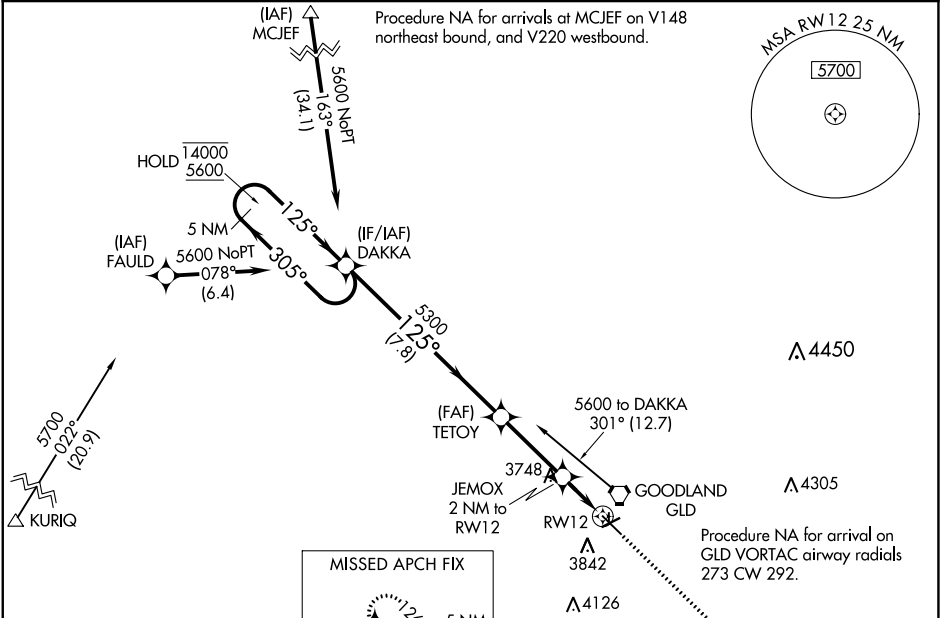
RENNER FLD/GOODLAND MUNI (GLD)

RNP APCH.

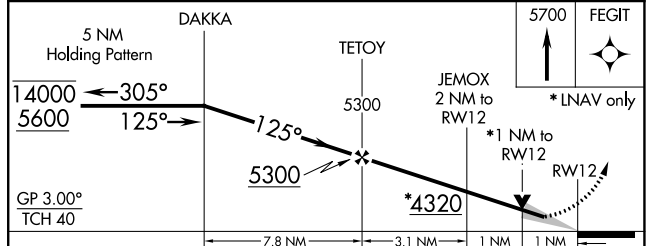
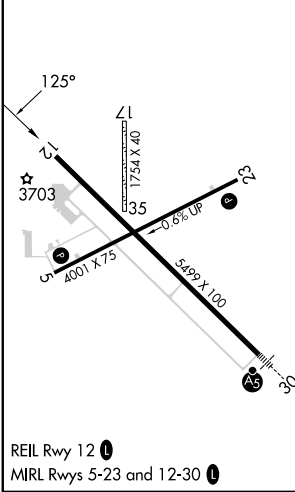
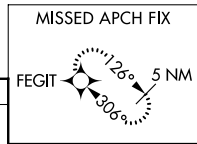
∇ Circling NA to Rwy 17 and 35. Circling NA south of Rwy 5-30.
⚠ For uncompensated Baro-VNAV systems, procedure NA below -23°C or above 54°C.

MISSED APPROACH: Climb to 5700 direct FEGIT and hold.

ASOS 121.025	DENVER CENTER 132.7 226.675	UNICOM 122.8 (CTAF) 0
------------------------	---------------------------------------	---------------------------------



ELEV 3657	TDZE 3647
-----------	-----------



CATEGORY	A	B	C	D
LPV DA		3897-1	250 (300-1)	
LNAV/VNAV DA		4021-1	374 (400-1)	
LNAV MDA		4000-1	353 (400-1)	
C CIRCLING	4060-1 403 (500-1)	4120-1 463 (500-1)	4120-1½ 463 (500-1½)	4240-2 583 (600-2)

NC-2, 08 AUG 2024 to 05 SEP 2024

NC-2, 08 AUG 2024 to 05 SEP 2024