

WAAS CH <b>48920</b> <b>W30A</b>	APP CRS <b>305°</b>	Rwy Idg TDZE Apt Elev	<b>5499</b> <b>3653</b> <b>3657</b>
--	------------------------	-----------------------------	---

# RNAV (GPS) RWY 30

RENNER FLD/GOODLAND MUNI (G.LD)

RNP APCH.

**⚠** Circling NA to Rws 17 and 35. Circling NA south of Rws 5 and 30. Rwy 30 helicopter visibility reduction below 3/4 SM NA. Inop table does not apply. For uncompensated Baro-VNAV systems, LNAV/VNAV NA below -22°C or above 54°C.

MALSR



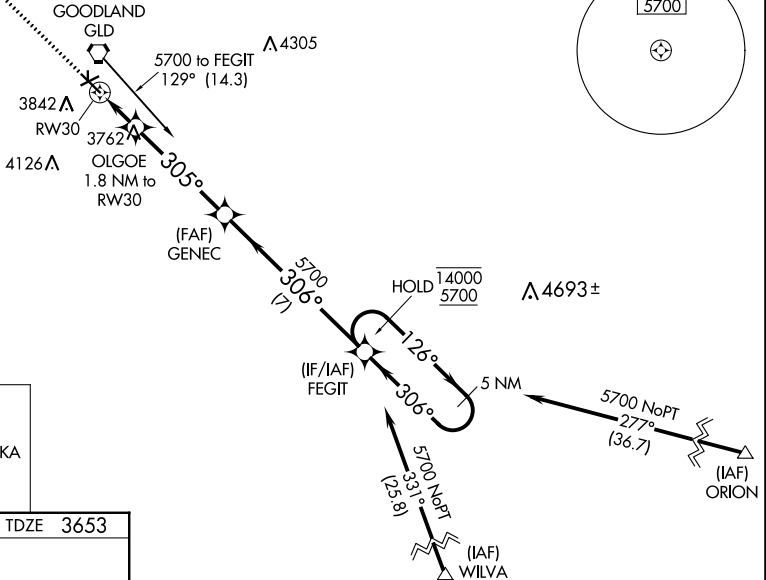
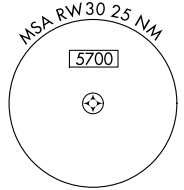
MISSED APPROACH: Climb to 5600 direct DAKKA and hold.

ASOS  
**121.025**

DENVER CENTER  
**132.7 226.675**

UNICOM  
**122.8 (CTAF)**

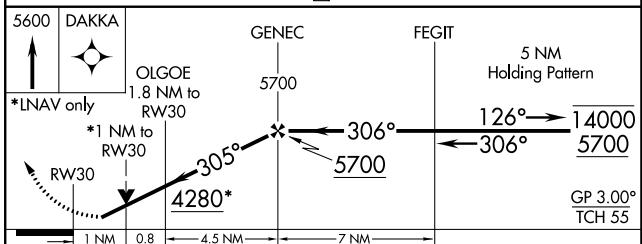
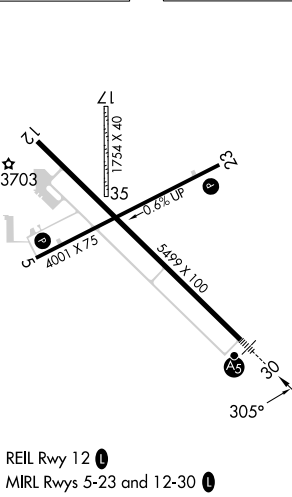
Procedure NA for arrival on GLD VORTAC airway radials 084 CW 140.



MISSED APCH FIX



ELEV 3657 TDZE 3653



CATEGORY	A	B	C	D
LPV DA		3903-1	250 (300-1)	
LNAV/VNAV DA		3903-1	250 (300-1)	
LNAV MDA		4020-1	367 (400-1)	
<b>C</b> CIRCLING	4080-1 423 (500-1)	4120-1 463 (500-1)	4120-1½ 463 (500-1½)	4240-2 583 (600-2)

NC-2, 08 AUG 2024 to 05 SEP 2024

NC-2, 08 AUG 2024 to 05 SEP 2024