

WAAS CH <b>93829</b> W15A	APP CRS <b>146°</b>	Rwy Idg TDZE Apt Elev	<b>3327</b> <b>67</b> <b>67</b>
---------------------------------	------------------------	-----------------------------	---------------------------------------

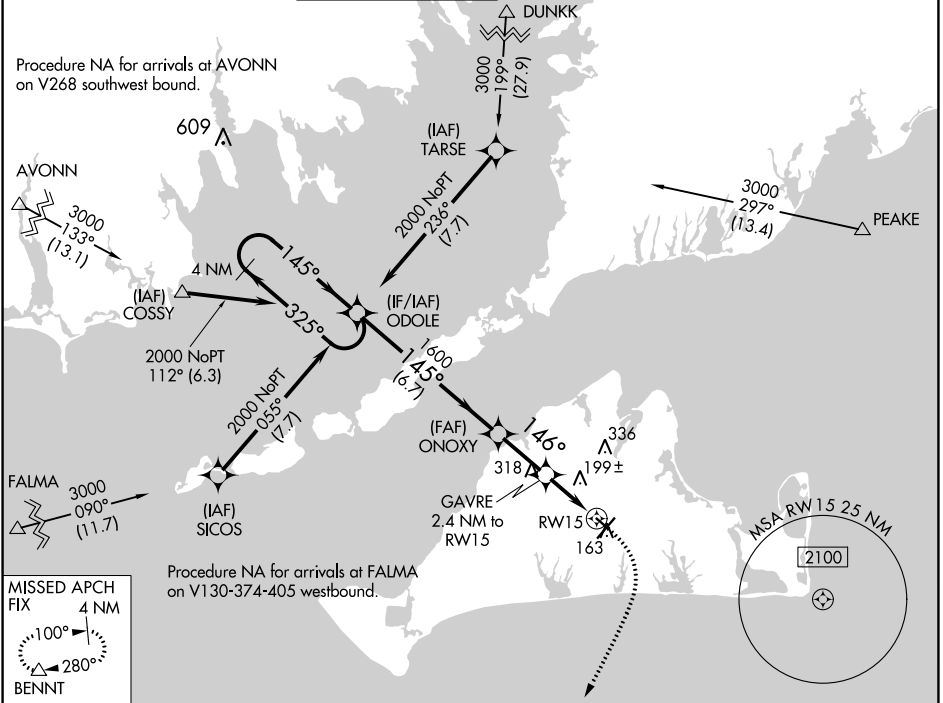
# RNAV (GPS) RWY 15

MARTHA'S VINEYARD (MVY)

**⚠** Baro-VNAV NA when using Hyannis altimeter setting. For uncompensated Baro-VNAV systems, LNAV/VNAV NA below -15°C (5°F) or above 54°C (130°F). When local altimeter setting not received, use Hyannis altimeter setting and increase all DA 54 feet and all MDA 60 feet; increase LNAV Cat C and D visibility and Circling Cat C and D visibility ¼ mile. DME/DME RNP-0.3 NA. Helicopter visibility reduction below 1 SM NA. Night landing: Rwy 15 NA.

**MISSED APPROACH:**  
Climb to 600 then climbing right turn to 2000 direct BENNT and hold.

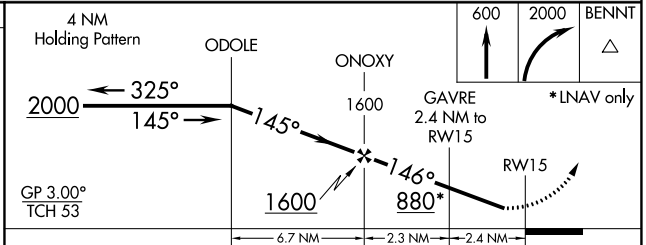
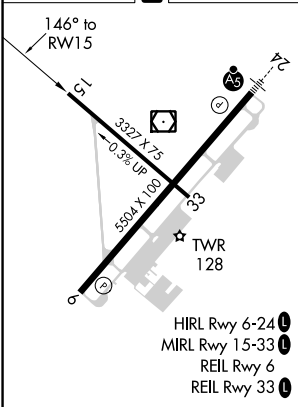
ATIS <b>126.25</b>	BOSTON APP CON * <b>133.75</b>	VINEYARD TOWER * <b>121.4</b> (CTAF) <b>0</b>	GND CON <b>124.35</b>	CLNC DEL <b>124.35</b>	CLNC DEL <b>119.7</b> (When twr closed)	UNICOM <b>122.95</b>
-----------------------	-----------------------------------	--	--------------------------	---------------------------	---	-------------------------



NE-1, 08 AUG 2024 to 05 SEP 2024

NE-1, 08 AUG 2024 to 05 SEP 2024

ELEV 67	<b>D</b>	TDZE 67
---------	----------	---------



CATEGORY	A	B	C	D
LPV DA		317-1	250 (300-1)	
LNAV/VNAV DA		317-1	250 (300-1)	
LNAV MDA	460-1	393 (400-1)	460-1½	393 (400-1½)
<b>C</b> CIRCLING	500-1 433 (500-1)	540-1 473 (500-1)	700-1¾ 633 (700-1¾)	780-2¼ 713 (800-2¼)