

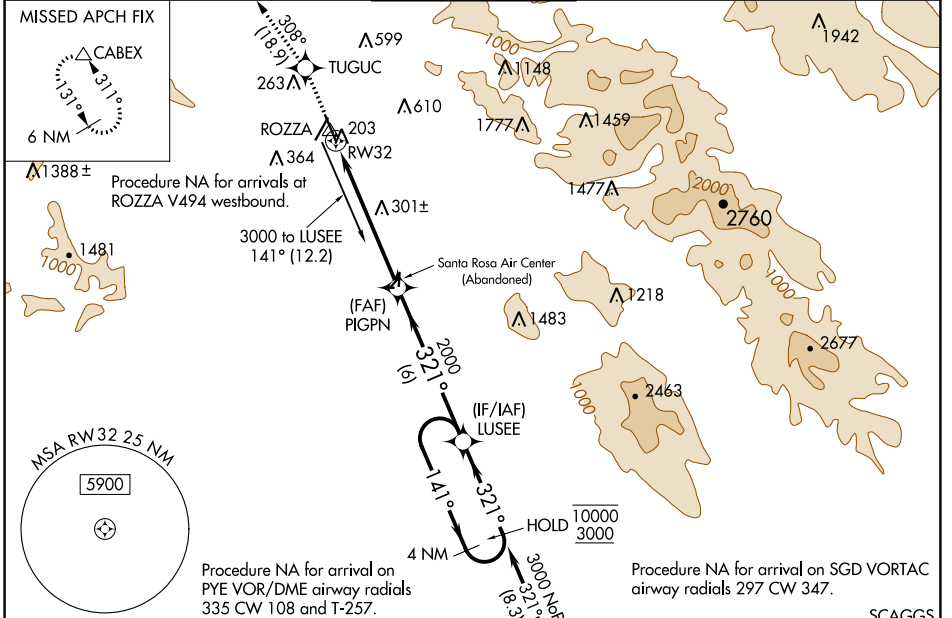
WAAS CH <b>72611</b> <b>W32A</b>	APP CRS <b>321°</b>	Rwy Idg TDZE <b>122</b> Apt Elev <b>129</b>	<b>6000</b>
--	------------------------	---	-------------

# RNAV (GPS) RWY 32

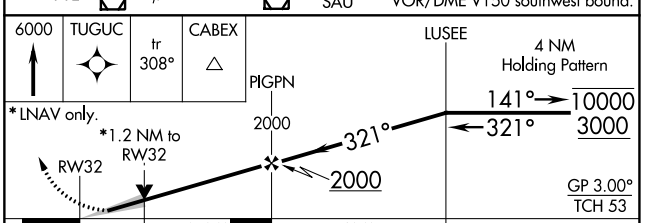
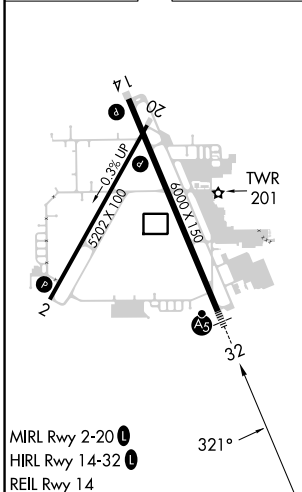
CHARLES M SCHULZ-SONOMA COUNTY (STS)

RNP APCH-GPS.	MALSRL	MISSED APPROACH: Climb to 6000 direct TUGUC and on track 308° to CABEX and hold, continue climb-in-hold to 6000.
<p>▼ For uncompensated Baro-VNAV systems, LNAV/VNAV NA below -4°C or above 54°C. #RVR 1800 authorized with use of FD or AP or HUD to DA.</p>		

ATIS <b>120.55</b>	OAKLAND CENTER <b>127.8 353.5</b>	SANTA ROSA TOWER* <b>118.5 (CTAF) 0 363.0</b>	GND CON <b>121.9</b>	UNICOM <b>122.95</b>
-----------------------	--------------------------------------	--	-------------------------	-------------------------



ELEV 129	D	TDZE 122
----------	---	----------



CATEGORY	A	B	C	D
LPV DA#	322/24 200 (200-½)			
LNAV/VNAV DA	570/50 448 (500-1)			
LNAV MDA	560/24 438 (500-½)	560/40 438 (500-¾)		
CIRCLING	600-1 471 (500-1)	680-1 551 (600-1)	1080-3 951 (1000-3)	1420-3 1291 (1300-3)

SW-2, 08 AUG 2024 to 05 SEP 2024

SW-2, 08 AUG 2024 to 05 SEP 2024