

REDSTONE ARSENAL, ALABAMA

RNAV (GPS) RWY 35

WAAS CH 50238 W35A	APCH CRS 353°	Rwy ldg TDZE Arprt Elev	7300 661 685
--------------------------	------------------	-------------------------------	--------------------

AL-703 (USA)

REDSTONE AAF (KHUA)

RNP APCH - GPS	MISSED APPROACH: Climb to 3000 direct IPUDE and hold.
* Circling not authorized E of Rwy 17-35.	

ATIS 120.65	HUNTSVILLE APP CON/DEP CON 125.6 354.1	TOWER* 126.95 (CTAF) 290.275	PAR
----------------	---	---------------------------------	-----

Visibility reduction by helicopters not authorized.

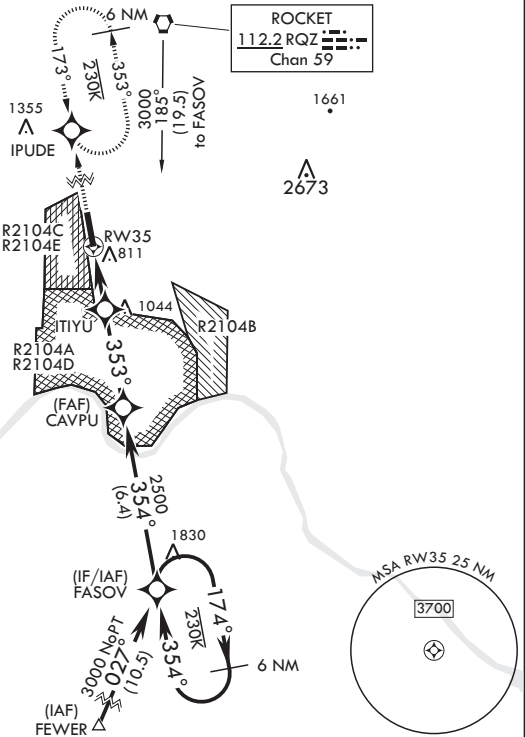
Inoperative table does not apply to LPV all CAT and LNAV CAT AB.

For uncompensated Baro-VNAV systems, LNAV/VNAV NA below -9°C (16°F) or above 54°C (130°F).

Procedure not authorized for arrivals at RQZ VORTAC airway R-147 CW R-261.

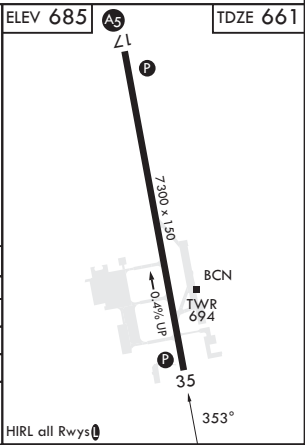
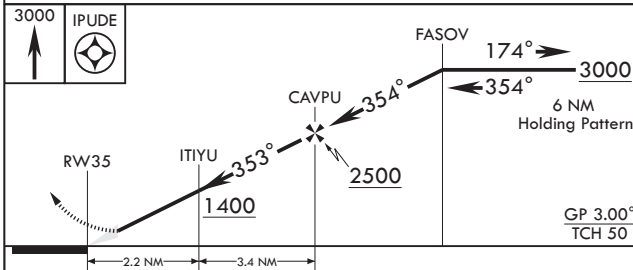
Procedure not authorized when R2104A or R2104C or R2104D are active.

Procedure not authorized for arrivals at FEWER southeast bound on T429.



SE-4, 08 AUG 2024 to 05 SEP 2024

SE-4, 08 AUG 2024 to 05 SEP 2024



CATEGORY	A	B	C	D	E
LPV DA	954-1		293	(300-1)	
LNAV/VNAV DA	1140-1½		479	(500-1½)	
LNAV MDA	1320-1	659 (700-1)	1320-1½	659 (700-1½)	
C CIRCLING*	1320-1	635 (700-1)	1480-2¼ 795 (800-2¼)	1740-3 1055 (1100-3)	

REDSTONE ARSENAL, ALABAMA 34°41'N - 86°41'W REDSTONE AAF (KHUA)

Amdt 2 05OCT23

RNAV (GPS) RWY 35