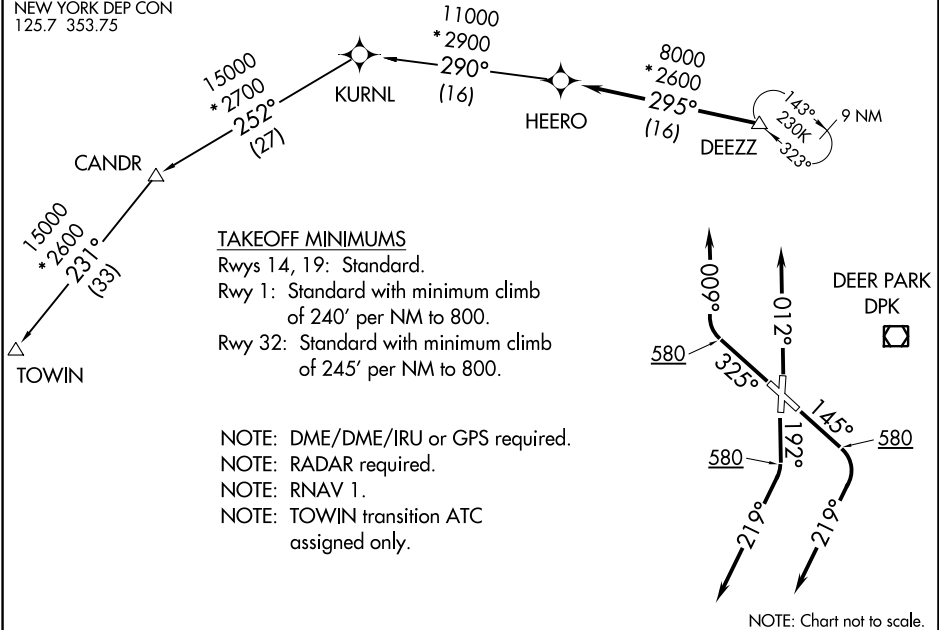


# DEZZ FIVE DEPARTURE (RNAV)

ATIS  
 126.65  
 CLNC DEL  
 128.25  
 GND CON  
 121.6 269.6  
 REPUBLIC TOWER \*  
 118.8 279.65  
 NEW YORK DEP CON  
 125.7 353.75

**TOP ALTITUDE:  
3000**



NE-2, 08 AUG 2024 to 05 SEP 2024

NE-2, 08 AUG 2024 to 05 SEP 2024



## DEPARTURE ROUTE DESCRIPTION

TAKEOFF RUNWAY 1: Climb heading 012°, thence . . . .

TAKEOFF RUNWAY 14: Climb heading 145° to 580, then climbing right turn heading 219°, thence . . . .

TAKEOFF RUNWAY 19: Climb heading 192° to 580, then climbing right turn heading 219°, thence . . . .

TAKEOFF RUNWAY 32: Climb heading 325° to 580, then climbing right turn heading 009°, thence . . . .

. . . . expect vectors to DEZZ, then on track 295° to HEERO. Maintain 3000.  
 Expect clearance to filed altitude/flight level within ten (10) minutes after departure.

CANDR TRANSITION (DEZZ5.CANDR)

TOWIN TRANSITION (DEZZ5.TOWIN)