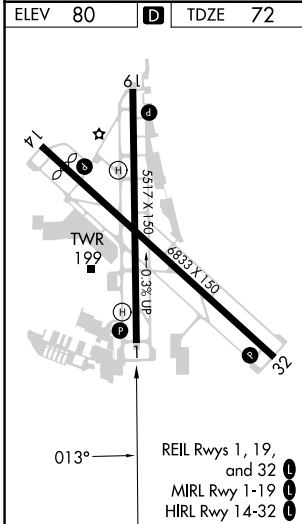
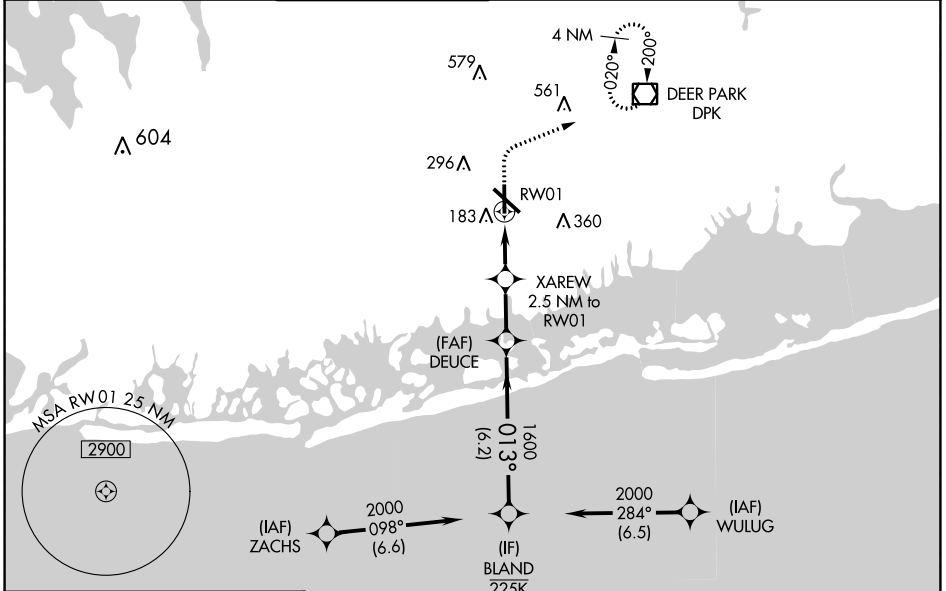


WAAS CH 82524 W01A	APP CRS 013°	Rwy Idg 5517 TDZE 72 Apt Elev 80
--	------------------------	---

RNAV (GPS) RWY 1

REPUBLIC (F'R'G)

RNP APCH - GPS.		MISSED APPROACH: (Do not exceed 190K until DPK VOR/DME) Climb to 800 then climbing right turn to 3000 direct DPK VOR/DME and hold, continue climb-in-hold to 3000.				
<p>⚠ For uncompensated Baro-VNAV systems, LNAV/VNAV NA below -12°C or above 54°C. Rwy 1 helicopter visibility reduction below $\frac{3}{4}$ SM NA.</p>		GND CON 121.6 269.6		CLNC DEL 128.25	CLNC DEL 128.25 (When twr closed)	UNICOM 122.95
ATIS 126.65	NEW YORK APP CON 128.125 269.0	REPUBLIC TOWER ★ 118.8 (CTAF) 0 279.65				



ELEV 80	D	TDZE 72		
800	3000	DPK	VGSI and RNAV glidepath not coincident (VGSI Angle 3.09°/TCH 44).	
<p>XAREW 2.5 NM to RW01</p> <p>DEUCE 1600</p> <p>BLAND 225K</p> <p>2000 013°</p> <p>GP 3.00° TCH 37</p>				
1.1	1.4 NM	2.2 NM	6.2 NM	
CATEGORY	A	B	C	D
LPV DA		335- $\frac{7}{8}$	263 (300- $\frac{7}{8}$)	
LNAV/VNAV DA		370- $\frac{7}{8}$	298 (300- $\frac{7}{8}$)	
LNAV MDA	460-1	388 (400-1)	460- $1\frac{1}{8}$	388 (400- $1\frac{1}{8}$)
C CIRCLING	640-1 560 (600-1)	720-1 640 (700-1)	860- $2\frac{1}{4}$ 780 (800- $2\frac{1}{4}$)	1000-3 920 (1000-3)

NE-2, 08 AUG 2024 to 05 SEP 2024

NE-2, 08 AUG 2024 to 05 SEP 2024