

(HKY3.HKY) 24081

AL-706 (FAA)

HICKORY THREE DEPARTURE (OBSTACLE)

HICKORY RGNL (HKY)
HICKORY, NORTH CAROLINA

ATLANTA CENTER

125.15 263.0
CLNC DEL (When twr closed)

124.25
HICKORY TOWER ★

128.15 (CTAF)

GND CON

121.7

ASOS

118.325

LONDON
116.55 LOZ
Chan 112 (Y)

BLUEFIELD
115.05 BLF
Chan 97 (Y)

GLADE SPRING
115.55 GZG
Chan 102 (Y)

HOLSTON MOUNTAIN
114.6 HMV
Chan 93

BECKLEY
117.7 BKW
Chan 124

PULASKI
116.8 PSK
Chan 115

ROANOKE
109.4 ROA
Chan 31

LYNCHBURG
109.2 LYH
Chan 29

FLAT ROCK
113.3 FAK
Chan 80

SOUTH BOSTON
110.4 SBV
Chan 41

DANVILLE
113.1 DAN

BARRETT'S MOUNTAIN
113.75 BZM
Chan 84 (Y)

GREENSBORO
116.2 GSO
Chan 109

RALEIGH-DURHAM
117.2 RDU
Chan 119

VOLUNTEER
116.4 VXV
Chan 111

SNOWBIRD
108.8 SOT
Chan 25

LIBERTY
113.0 LIB
Chan 77

SUGARLOAF MOUNTAIN
112.2 SUG
Chan 59

SPARTANBURG
115.7 SPA
Chan 104

CHARLOTTE
115.0 CLT
Chan 97

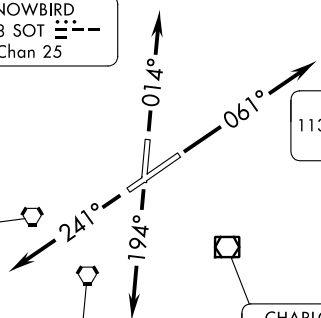
SANDHILLS
111.8 SDZ
Chan 55

ELECTRIC CITY
108.6 ELW
Chan 23

COLLIERS
113.9 IRQ
Chan 86

COLUMBIA
114.7 CAE
Chan 94

FLORENCE
115.2 FLO
Chan 99



SE-2, 08 AUG 2024 to 05 SEP 2024

SE-2, 08 AUG 2024 to 05 SEP 2024

TAKEOFF MINIMUMS

Rwy 1, 6, 24: Standard with minimum climb of 340' per NM to 4000.

Rwy 19: Standard with minimum climb of 286' per NM to 4000.

(CONTINUED ON FOLLOWING PAGE)

NOTE: Chart not to scale.

HICKORY THREE DEPARTURE (OBSTACLE)

HICKORY, NORTH CAROLINA
HICKORY RGNL (HKY)

(HKY3.HKY) 09FEB12