

WAAS CH <b>49116</b> W24A	APP CRS <b>236°</b>	Rwy Idg <b>5000</b> TDZE <b>403</b> Apt Elev <b>407</b>
---------------------------------	------------------------	---

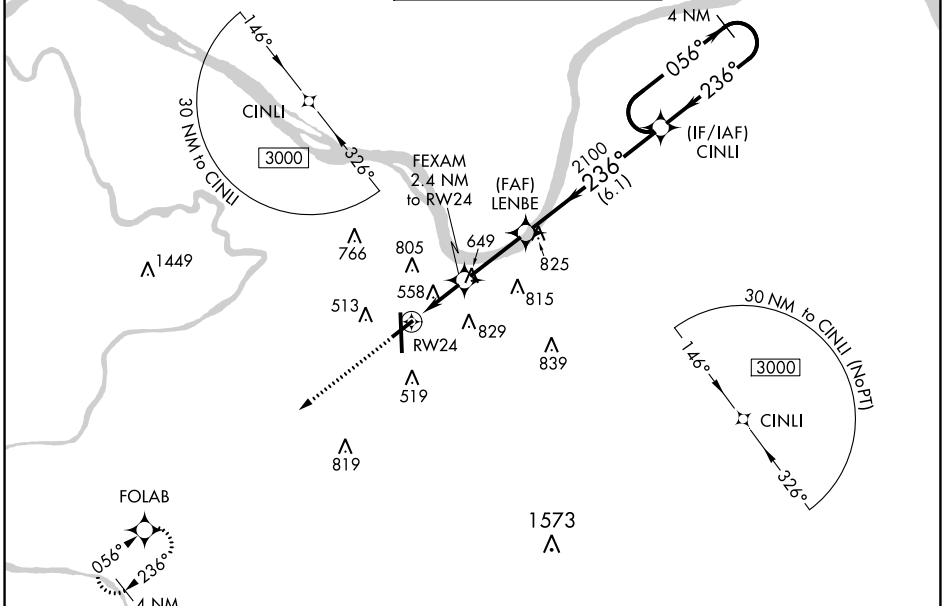
# RNAV (GPS) RWY 24

OWENSBORO/DAVIESS COUNTY RGNL (OWB)

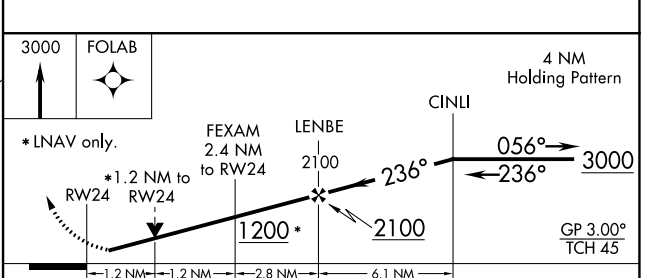
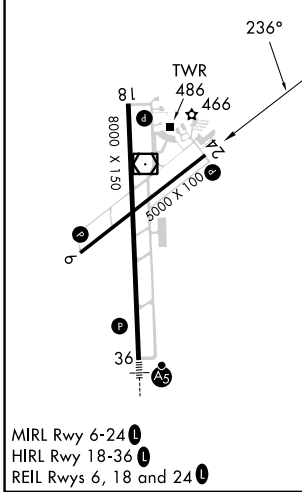
**⚠** For uncompensated Baro-VNAV systems, LNAV/VNAV NA below -15°C (5°F) or above 54°C (130°F). DME/DME RNP-0.3 NA. Rwy 24 helicopter visibility reduction below 3/4 SM NA. When local altimeter setting not received, use Evansville altimeter setting: increase LPV DA to 712 feet and all Cats visibility 1/4 mile; increase LNAV/VNAV DA to 902 feet and all Cats visibility 1/4 mile; increase all MDA 60 feet and LNAV Cats C/D and Circling Cats C/D visibility 1/4 mile. Baro-VNAV and VDP NA when using Evansville altimeter setting.

**MISSED APPROACH:**  
Climb to 3000 direct FOLAB and hold.

AWOS-3PT <b>119.025</b>	EVANSVILLE APP CON * <b>124.025 290.9</b>	OWENSBORO TOWER * <b>120.7 (CTAF) 0 251.15</b>	GND CON <b>121.7</b>	UNICOM <b>122.95</b>
----------------------------	--	---	-------------------------	-------------------------



ELEV <b>407</b>	<b>D</b>	TDZE <b>403</b>
-----------------	----------	-----------------



CATEGORY	A	B	C	D
LPV DA		653-3/4	250 (300-3/4)	
LNAV/VNAV DA		843-1 1/2	440 (500-1 1/2)	
LNAV MDA	820-1	417 (500-1)	820-1 1/2 417 (500-1 1/2)	
CIRCLING	860-1 453 (500-1)	1120-1 713 (800-1)	1140-2 733 (800-2)	1140-2 1/4 733 (800-2 1/4)

SE-1, 08 AUG 2024 to 05 SEP 2024

SE-1, 08 AUG 2024 to 05 SEP 2024