

VOR/DME OWB 108.65 Chan 23 (Y)	APP CRS 005°	Rwy Idg TDZE Apt Elev	8000 401 407
--	------------------------	-----------------------------	---

VOR RWY 36

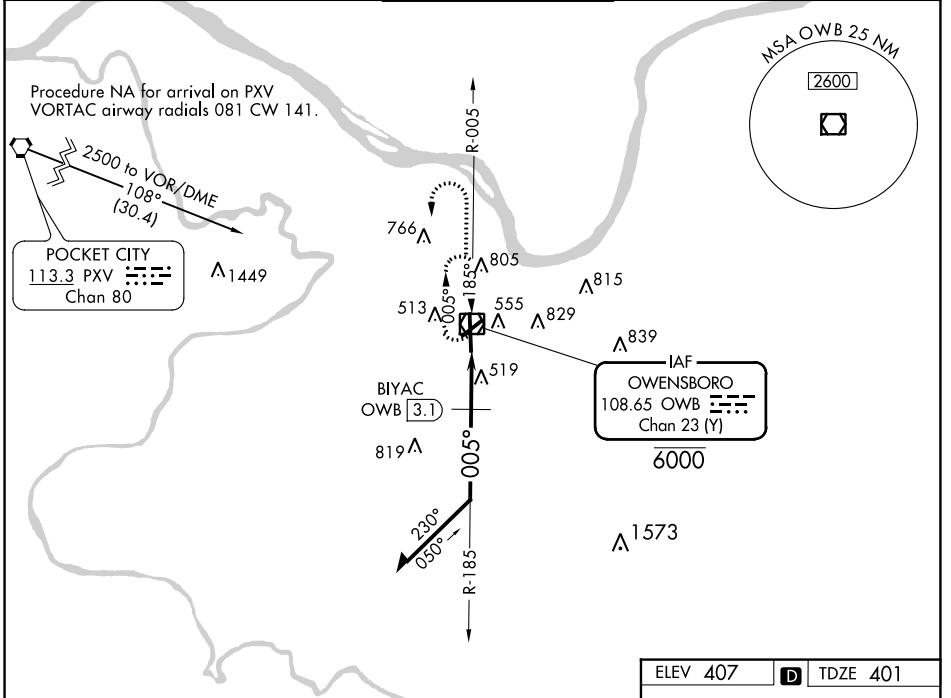
OWENSBORO/DAVIESS COUNTY RGNL (OWB)

▲ For inop ALS, increase S-36 Cat C and D visibility to 2 SM and BIYAC fix minimums S-36 Cat C and D visibility to 1½ SM.

MALSR

MISSED APPROACH: Climb to 2500 then left turn direct OWB VOR/DME and hold.

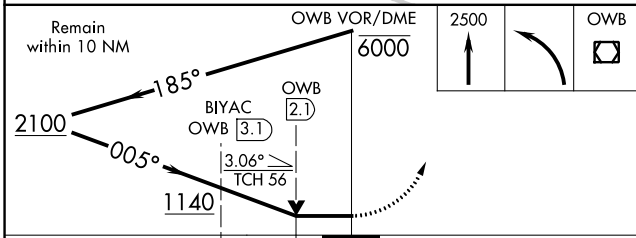
AWOS-3PT 119.025	EVANSVILLE APP CON ★ 124.025 290.9	OWENSBORO TOWER ★ 120.7 (CTAF) 251.15	GND CON 121.7	UNICOM 122.95
----------------------------	--	--	-------------------------	-------------------------



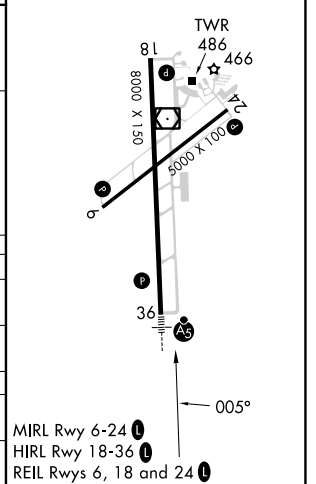
SE-1, 08 AUG 2024 to 05 SEP 2024

SE-1, 08 AUG 2024 to 05 SEP 2024

ELEV 407	D	TDZE 401
----------	----------	----------



CATEGORY	A	B	C	D
S-36	1140-½	739 (800-½)	1140-1½	739 (800-1½)
C CIRCLING	1140-1	733 (800-1)	1140-2 733 (800-2)	1140-2¼ 733 (800-2¼)
BIYAC FIX MINIMUMS				
S-36	820-½	419 (500-½)	820-¾	419 (500-¾)
C CIRCLING	860-1 453 (500-1)	1120-1 713 (800-1)	1140-2 733 (800-2)	1140-2¼ 733 (800-2¼)



VOR RWY 36