

TACAN RWY 25

TACAN LRF Chan 29	APCH CRS 259°	Rwy ldg TDZE 12,007 301 Arprt Elev 312
--------------------------	----------------------	--

AL-738 [USAF]

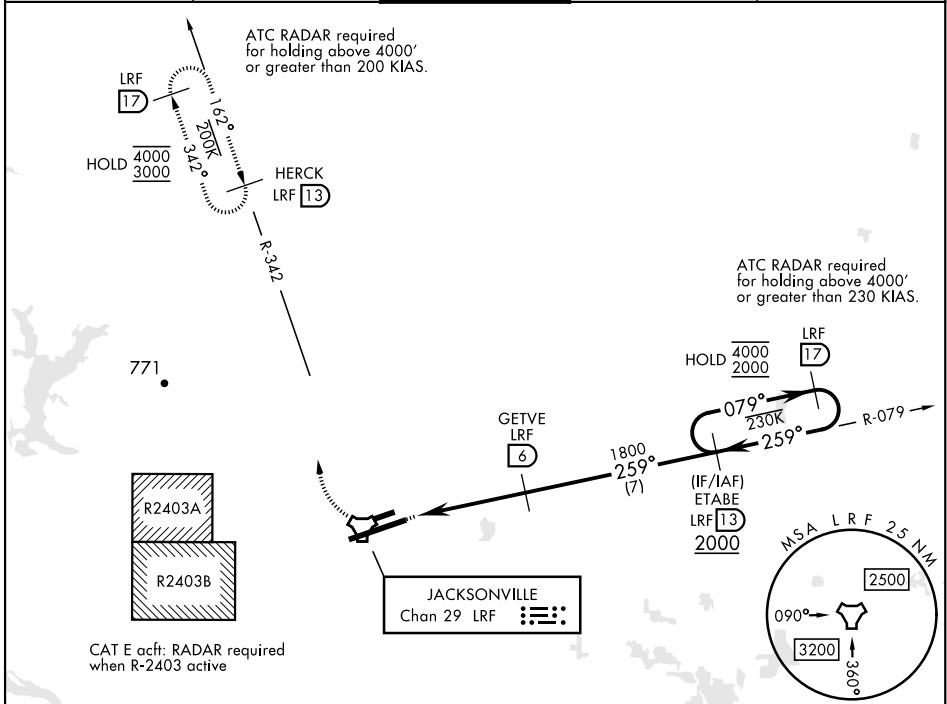
LITTLE ROCK AFB (KLRF)

ALSF-2 MISSED APPROACH: Climbing right turn to 3000 to intercept LRF R-342 outbound to HERCK and hold as published.

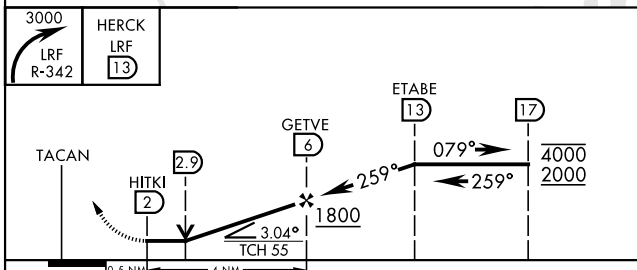
ALTERNATE MISSED APPROACH: Climbing to 3000, fly runway heading until LRF 2 DME, then turn right heading 360°, EFC from ATC.

NOTES:
 * When ALS inop, increase CAT AB RVR to 55, vis to 1 mile; CAT CDE vis to 1½ miles.
 ** Circling not authorized S of Rwy 07-25.

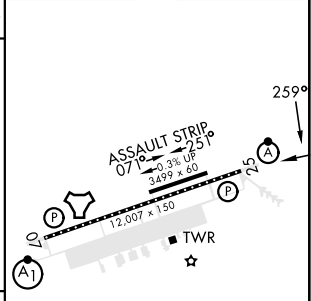
ATIS ★ 119.175 251.1	APP CON 119.5 306.2	TOWER 120.6 269.075	GND CON 132.8 275.8	CLNC DEL 253.5
-----------------------------	----------------------------	----------------------------	----------------------------	-----------------------



EMERG SAFE ALT 100 NM 4000



ELEV 312	TDZE 301
----------	----------



CATEGORY	A	B	C	D	E
S-25 *	800/24 499 (500-½)		800/50 499 (500-1)		
CIRCLING **	800-1 488 (500-1)	920-1 608 (700-1)	920-1¾ 608 (700-1¾)	1040-2¼ 728 (800-2¼)	1040-2½ 728 (800-2½)

HRL Rwy 07-25
TDZL/CL Rwy 25

TACAN RWY 25

SC-1, 08 AUG 2024 to 05 SEP 2024

SC-1, 08 AUG 2024 to 05 SEP 2024