

(AHMET4.KKIDS) 22083

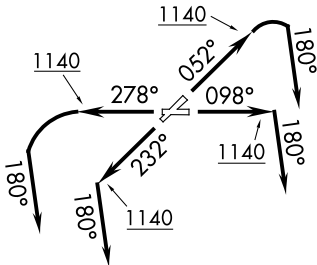
AL-753 (FAA)

LAKE COUNTY EXEC (LNN)  
WILLOUGHBY, OHIO

# AHMET FOUR DEPARTURE (RNAV)

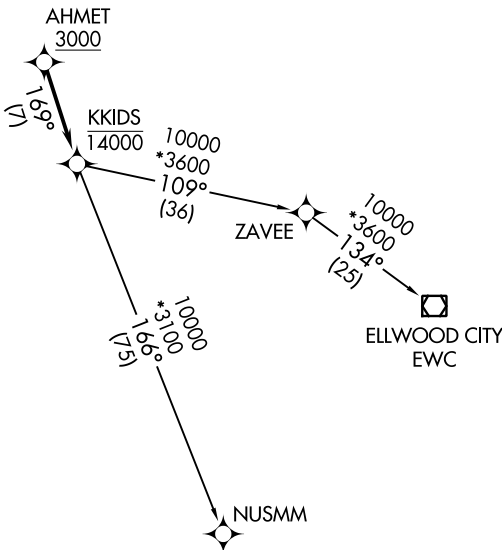
AWOS-3PT 119.225  
CTAF 122.725  
CLEVELAND DEP CON  
125.35 346.325

**TOP ALTITUDE:  
ASSIGNED BY ATC**



### TAKEOFF MINIMUMS:

Rwys 5, 10, 23, 28: Standard  
with minimum climb of 500'  
per NM to 1140.



NOTE: RNAV 1.  
NOTE: RADAR required.  
NOTE: DME/DME/IRU or GPS required.

NOTE: Chart not to scale.

EC-2, 08 AUG 2024 to 05 SEP 2024

EC-2, 08 AUG 2024 to 05 SEP 2024



## DEPARTURE ROUTE DESCRIPTION

TAKEOFF RUNWAY 5: Climb on heading 052° to 1140, then right turn on heading 180° or as assigned by ATC for RADAR vectors to cross AHMET at or above 3000, thence....

TAKEOFF RUNWAY 10: Climb on heading 098° to 1140, then on heading 180° or as assigned by ATC for RADAR vectors to cross AHMET at or above 3000, thence....

TAKEOFF RUNWAY 23: Climb on heading 232° to 1140, then on heading 180° or as assigned by ATC for RADAR vectors to cross AHMET at or above 3000, thence....

TAKEOFF RUNWAY 28: Climb on heading 278° to 1140, then left turn on heading 180° or as assigned by ATC for RADAR vectors to cross AHMET at or above 3000, thence....

....on track 169° to cross KKIDS at or below 14000, then on (transition).

Maintain altitude assigned by ATC, expect filed altitude ten minutes after departure.

ELLWOOD CITY TRANSITION (AHMET4.EWC)

NUSMM TRANSITION (AHMET4.NUSMM)

# AHMET FOUR DEPARTURE (RNAV)

(AHMET4.KKIDS) 26MAR20

WILLOUGHBY, OHIO  
LAKE COUNTY EXEC (LNN)