

NDB LQL 263	APP CRS 099°	Rwy ldg TDZE Apt Elev	4272 625 626
-----------------------	------------------------	-----------------------------	---

NDB RWY 10

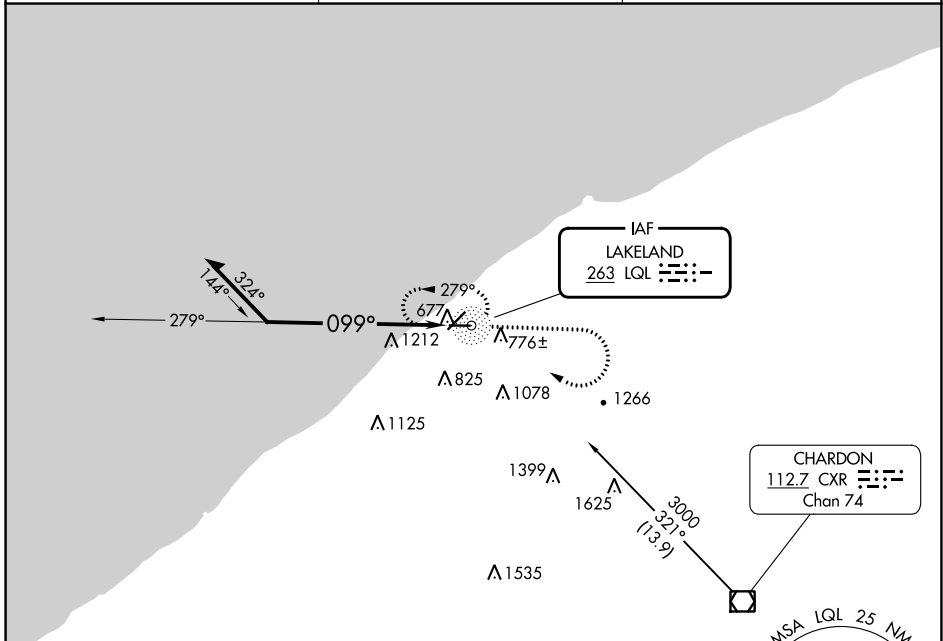
LAKE COUNTY EXEC (LNN)

RADAR required for procedure entry.

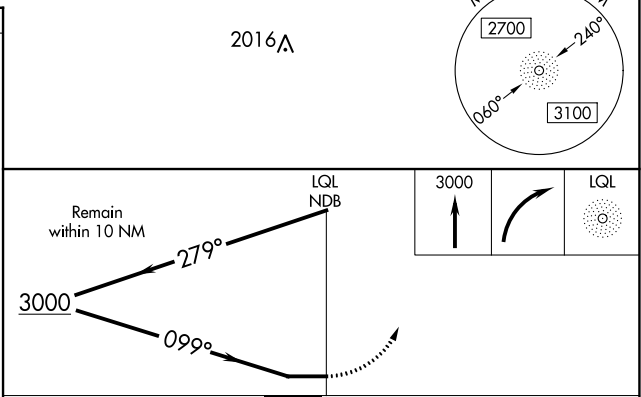
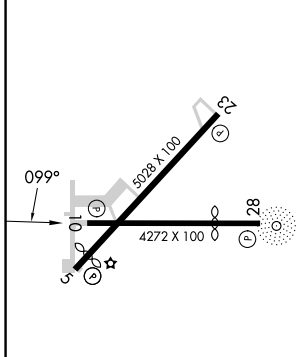
▼ NA Rwy 10 helicopter visibility reduction below 3/4 SM NA.

MISSED APPROACH: Climb to 3000 then right turn direct LQL NDB and hold.

AWOS-3PT 119.225	CLEVELAND APP CON 125.35 346.325	UNICOM 122.725 (CTAF) 0
----------------------------	--	-----------------------------------



ELEV 626	TDZE 625
----------	----------



CATEGORY	A	B	C	D
S-10	1700-1¼ 1075 (1100-1¼)	1700-1½ 1075 (1100-1½)	1700-3 1075 (1100-3)	NA
CIRCLING	1700-1¼ 1074 (1100-1¼)	1700-1½ 1074 (1100-1½)	1700-3 1074 (1100-3)	NA

WILLOUGHBY, OHIO
Amdt 10B 26MAR20

41°41'N-81°23'W

LAKE COUNTY EXEC (LNN)

NDB RWY 10

EC-2, 08 AUG 2024 to 05 SEP 2024

EC-2, 08 AUG 2024 to 05 SEP 2024