

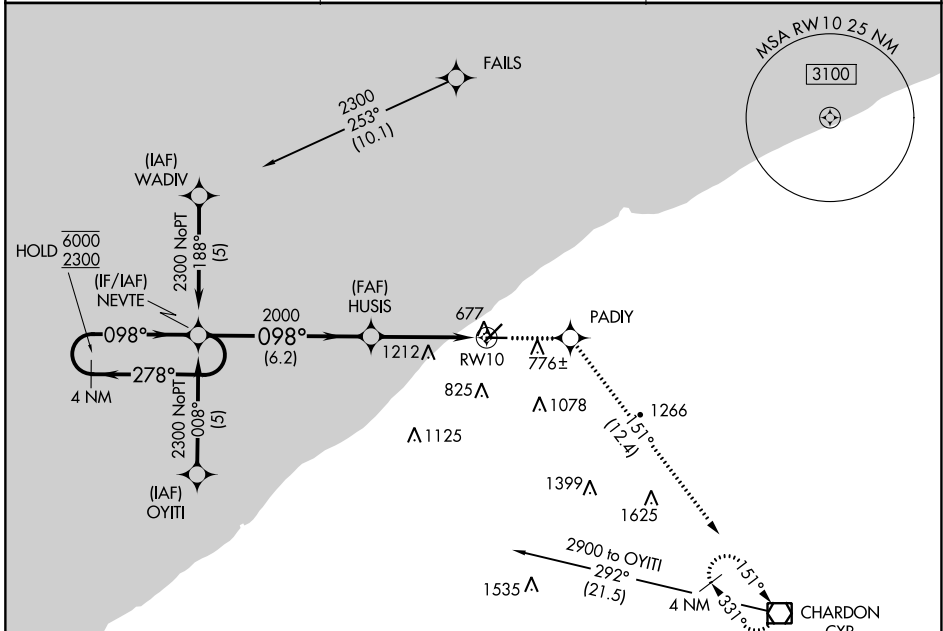
APP CRS	Rwy Idg	<b>4272</b>
<b>098°</b>	TDZE	<b>625</b>
	Apt Elev	<b>626</b>

# RNAV (GPS) RWY 10

LAKE COUNTY EXEC (LNN)

RNP APCH.	MISSED APPROACH: Climb to 2900 direct PADIY and on track 151° to CXR VOR/DME and hold.
	Rwy 10 helicopter visibility reduction below 3/4 SM NA.

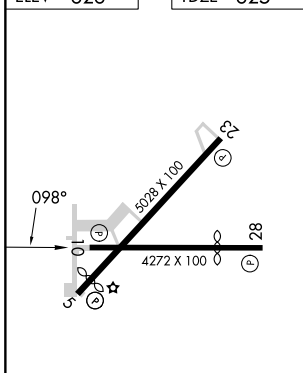
AWOS-3PT <b>119.225</b>	CLEVELAND APP CON <b>125.35 346.325</b>	UNICOM <b>122.725 (CTAF) 0</b>
----------------------------	--	-----------------------------------



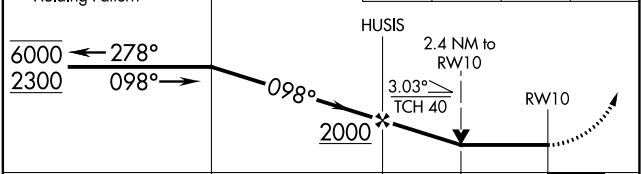
EC-2, 08 AUG 2024 to 05 SEP 2024

EC-2, 08 AUG 2024 to 05 SEP 2024

ELEV 626	TDZE 625
----------	----------



VGSI and descent angles not coincident (VGSI Angle 3.50/TCH 47).	2900	PADIY	CXR
4 NM Holding Pattern			tr 151°



CATEGORY	A	B	C	D
LNAV MDA	1560-1 1/4	935 (1000-1 1/4)	1560-2 3/4 935 (1000-2 3/4)	NA
CIRCLING	1560-1 1/4	934 (1000-1 1/4)	1560-2 3/4 934 (1000-2 3/4)	NA