

# ZAAPA FIVE DEPARTURE (RNAV)

EC-2, 08 AUG 2024 to 05 SEP 2024

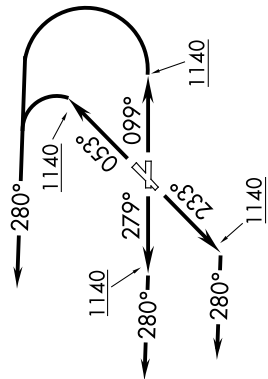
AWOS-3PT  
119.225  
CTAF  
122.725  
CLEVELAND DEP CON  
125.35 346.325



**TOP ALTITUDE:  
ASSIGNED BY ATC**

**TAKEOFF MINIMUMS:**

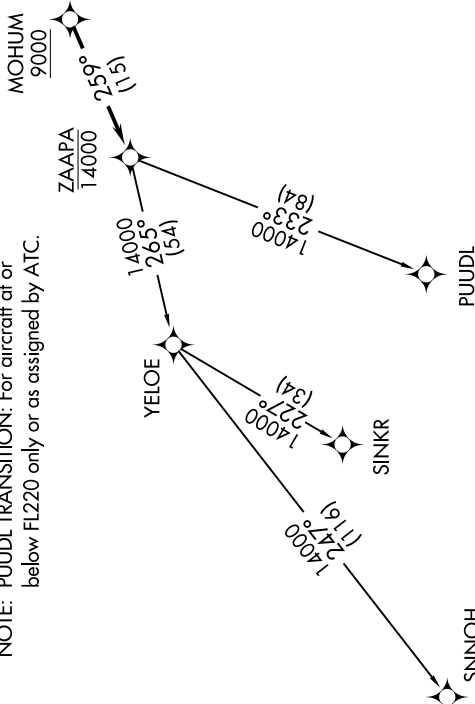
Rwys 5, 10, 23, 28: Standard with a minimum climb of 500' per NM to 1140.



NOTE: RADAR required.  
NOTE: RNAV 1.

NOTE: DME/DME/IRU or GPS required.

NOTE: PUIJL TRANSITION: For aircraft at or below FL220 only or as assigned by ATC.



**DEPARTURE ROUTE DESCRIPTION**

**TAKEOFF RUNWAY 5:** Climb on heading 053° to 1140, then left turn heading 280° or as assigned by ATC for RADAR vectors to cross MOHUM at or above 9000, thence...  
**TAKEOFF RUNWAY 10:** Climb on heading 099° to 1140, then left turn heading 280° or as assigned by ATC for RADAR vectors to cross MOHUM at or above 9000, thence...  
**TAKEOFF RUNWAY 23:** Climb on heading 233° to 1140, then on heading 280° or as assigned by ATC for RADAR vectors to cross MOHUM at or above 9000, thence...  
**TAKEOFF RUNWAY 28:** Climb on heading 279° to 1140, then on heading 280° or as assigned by ATC for RADAR vectors to cross MOHUM at or above 9000, thence...

...on track 259° to cross ZAAPA at or below 14000, then on (transition). Maintain ATC assigned altitude, expect filed altitude ten minutes after departure.

PUIJL TRANSITION (ZAAPA5.PUIJL)  
 SINKR TRANSITION (ZAAPA5.SINKR)  
 SNNOH TRANSITION (ZAAPA5.SNNOH)

NOTE: Chart not to scale.

# ZAAPA FIVE DEPARTURE (RNAV)

(ZAAPA5.ZAAPA) 26MAR20

WILLOUGHBY, OHIO  
LAKE COUNTY EXEC (L'N'N)

EC-2, 08 AUG 2024 to 05 SEP 2024