

ALANA TWO DEPARTURE (ALANA2•ALANA)

AL-754 [USAF]

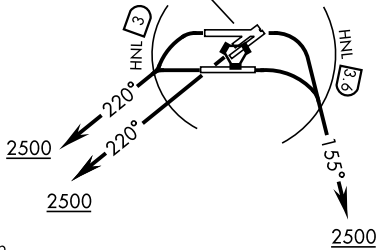
HONOLULU, HAWAII

D-ATIS
 127.9 251.15
 CLNC DEL
 121.4 281.4
 GND CON
 121.9 348.6
 HONOLULU TOWER
 118.1 257.8
 HCF APP
 118.3 317.6
 N119.1 265.0
 W118.3 269.0

HONOLULU
 114.8 HNL
 Chan 95

Departure from Rwy 8L/R:
 Right turn to heading 155° must be completed within 2 NM of departure end of rwy (HNL VORTAC 3.6 DME).
 Departure from Rwy 26L/R:
 Left turn to heading 220° must be completed within 2 NM of departure end of rwy (HNL VORTAC 3 DME).

CAUTION: Large ships operating in channel waters surrounding HNL airport.



TAKEOFF MINIMUMS

Rwy 4L/R: NA - Obstacles/Noise.
 Rwy 22L/R, 26L/R: Standard.
 Rwy 8L: Standard with minimum climb of 305 ft per NM to 600.
 Rwy 8R: Standard with climb of 296 ft per NM to 500.

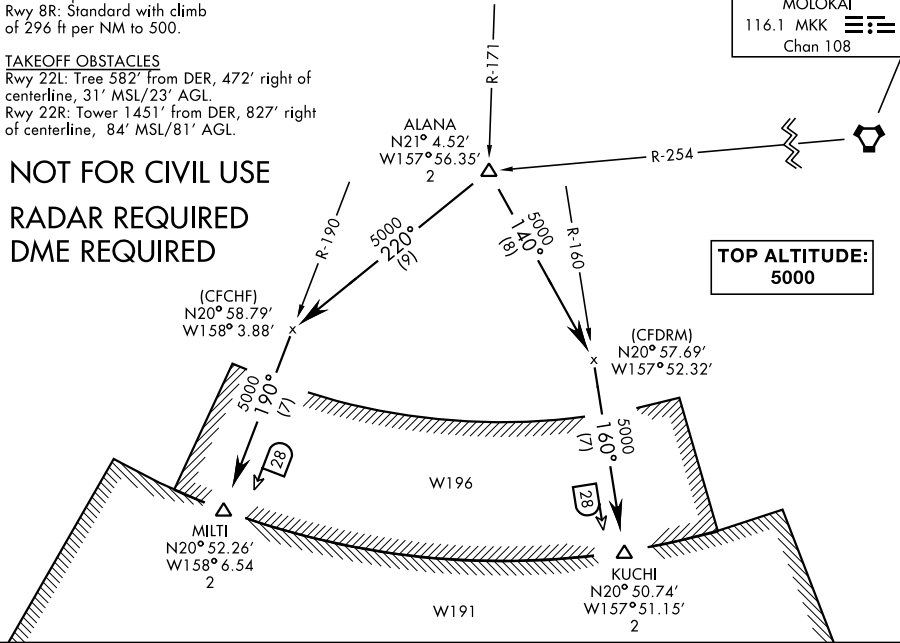
TAKEOFF OBSTACLES

Rwy 22L: Tree 582' from DER, 472' right of centerline, 31' MSL/23' AGL.
 Rwy 22R: Tower 1451' from DER, 827' right of centerline, 84' MSL/81' AGL.

NOT FOR CIVIL USE
RADAR REQUIRED
DME REQUIRED

MOLOKAI
 116.1 MKK
 Chan 108

**TOP ALTITUDE:
 5000**



DEPARTURE ROUTE DESCRIPTION

TAKE-OFF RWY 8 L/R: Climbing right turn heading 155° to 2500. Thence...

TAKE-OFF RWY 22 L/R: Climb heading 220° to 2500. Thence...

TAKE-OFF RWY 26 L/R: Climbing left turn heading 220° to 2500. Thence...

... expect RADAR vectors to ALANA, then on assigned transition. Maintain 5000, expect clearance to enroute altitude at ALANA.

KUCHI TRANSITION (ALANA2•KUCHI): From over ALANA on heading 140° and HNL R-160 to KUCHI.

MILTI TRANSITION (ALANA2•MILTI): From over ALANA on heading 220° and HNL R-190 to MILTI.

ALANA TWO DEPARTURE (ALANA2•ALANA)

HONOLULU, HAWAII