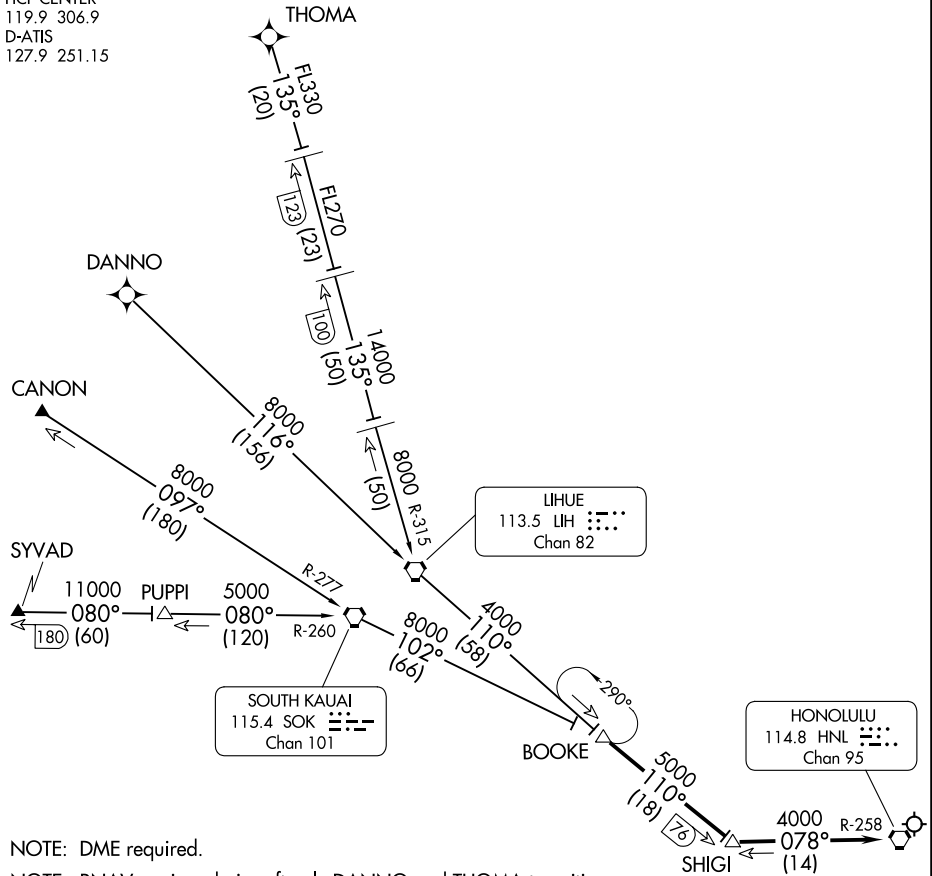


BOOKE EIGHT ARRIVAL

AL-754 (FAA)

DANIEL K INOUYE INTL (HNL) (PHNL)
HONOLULU, HAWAII

HCF CENTER
119.9 306.9
D-ATIS
127.9 251.15



NOTE: DME required.

NOTE: RNAV equipped aircraft only DANNO and THOMA transitions.

NOTE: Chart not to scale

ARRIVAL ROUTE DESCRIPTION

CANON TRANSITION (CANON.BOOKE8): From over CANON INT via SOK R-277 to SOK VORTAC. Then via SOK R-102 to BOOKE DME. Thence. . .

DANNO TRANSITION (DANNO.BOOKE8): From over DANNO WP via RNAV 116° course to LIH VORTAC. Then via LIH R-110 to BOOKE DME. Thence. . .

SYVAD TRANSITION (SYVAD.BOOKE8): From over SYVAD INT via SOK R-260 to SOK VORTAC. Then via SOK R-102 to BOOKE DME. Thence. . .

THOMA TRANSITION (THOMA.BOOKE8): From over THOMA WP via RNAV 135° course to LIH 123 DME, then LIH R-315 to LIH VORTAC. Then via LIH R-110 to BOOKE DME. Thence. . .

Thence. . .

. . . From over BOOKE DME via LIH R-110 and HNL R-258 to HNL VORTAC. Expect RADAR vectors.

BOOKE EIGHT ARRIVAL

(BOOKE.BOOKE8) 27MAY93

HONOLULU, HAWAII
DANIEL K INOUYE INTL (HNL) (PHNL)

PAC, 11 JUL 2024 to 05 SEP 2024

PAC, 11 JUL 2024 to 05 SEP 2024