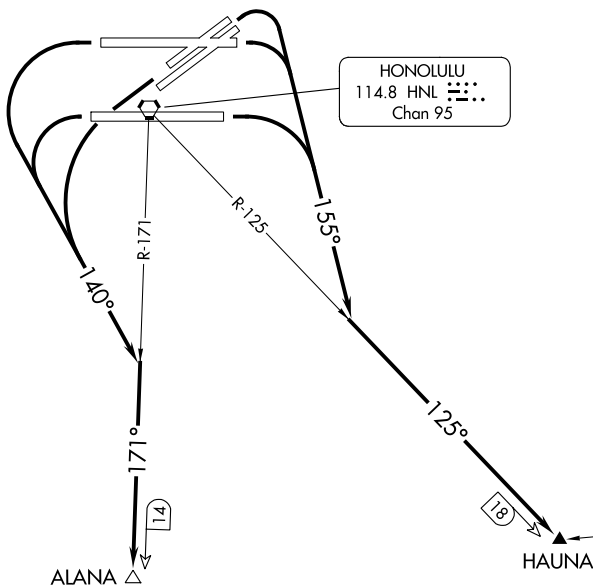


(HNL2.HNL) 23334

# HONOLULU TWO DEPARTURE (OBSTACLE)

DANIEL K INOUYE INTL (HNL) (PHNL)  
AL-754 (FAA) HONOLULU, HAWAII

HCF APPROACH  
 EAST 124.8 317.6  
 WEST 118.3 269.0  
 D-ATIS 127.9 251.15  
 CLNC DEL 121.4 281.4  
 GND CON 121.9 348.6  
 HONOLULU TOWER 118.1 257.8  
 123.9 273.575 (Rwy 8R/26L)



HONOLULU  
 114.8 HNL .  
 Chan 95

MOLOKAI  
 116.1 MKK .  
 Chan 108

PAC, 11 JUL 2024 to 05 SEP 2024

PAC, 11 JUL 2024 to 05 SEP 2024

### TAKEOFF MINIMUMS

Rwys 4W, 8W, 22W, 26W: NA-ATC.

Rwys 22L/R, 26R: Standard.

Rwys 4L/R: Standard with minimum climb of 425' per NM to 1900, do not exceed 180K until southeast bound on 155° heading, or 1700-2½ for VCOA.

Rwy 8L: Standard with minimum climb of 310' per NM to 1000, or 1700-2½ for VCOA.

Rwy 8R: Standard with minimum climb of 270' per NM to 1000, or 1700-2½ for VCOA.

Rwy 26L: Standard with minimum climb of 237' per NM to 300, or 1700-2½ for VCOA.

(CONTINUED ON FOLLOWING PAGE)

NOTE: Chart not to scale.

### DEPARTURE ROUTE DESCRIPTION

TAKEOFF RUNWAYS 4L/R, 8L/R: Climbing right turn to 3000 on heading 155° to intercept HNL R-125 to HAUNA INT before proceeding on course, or. . . .

TAKEOFF RUNWAYS 22L/R, 26L/R: Climbing left turn to 3000 on heading 140° to intercept HNL R-171 to ALANA INT before proceeding on course, or. . . .

. . . .for visual climb over airport: obtain ATC approval for VCOA when requesting IFR clearance. Climb in visual conditions to cross Daniel K. Inouye Intl Airport southbound at 1600, continue climb to 3000 on HNL R-171 to ALANA INT before proceeding on course.

# HONOLULU TWO DEPARTURE (OBSTACLE)

(HNL2.HNL) 08NOV18

DANIEL K INOUYE INTL (HNL) (PHNL)  
HONOLULU, HAWAII