

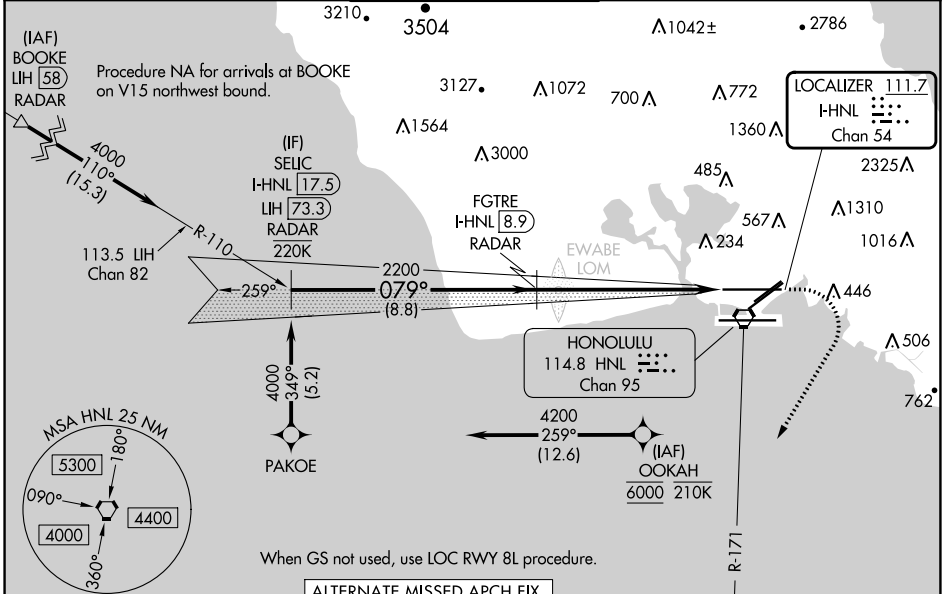
LOC/DME I-HNL 111.7 Chan 54	APP CRS 079°	Rwy Idg 12312 TDZE 13 Apt Elev 13
--	------------------------	--

ILS RWY 8L

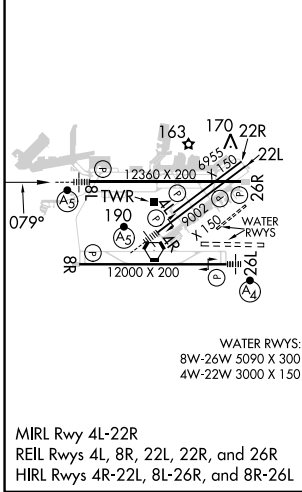
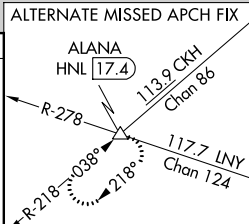
DANIEL K INOUEY INTL (HNL) (PHNL)

RNP APCH - GPS. From OOKAH.	MAISR	MISSED APPROACH: Climb to 500 then climbing right turn to 5000 on heading 200° and HNL VORTAC R-171 to ALANA INT/HNL 13.9 DME and hold, continue climb-in-hold to 5000.
DME or RADAR required.		
<p>For inop ALS, increase Cat E visibility to 3/4 SM. OOKAH transition NA for Cat E aircraft. Cat E restricted to USAF/USN aircraft.</p>		

D-ATIS 127.9 251.15	HCF APPROACH 118.3 269.0	HONOLULU TOWER 118.1 257.8 123.9 273.575 (Rwy 8R/26L)	GND CON 121.9 348.6	CLNC DEL 121.4 281.4
-------------------------------	------------------------------------	---	-------------------------------	--------------------------------



ELEV 13	D	TDZE 13
---------	----------	---------



VGSI and ILS glidepath not coincident (VGSI Angle 3.00/TCH 73). SELIC I-HNL [17.5] RADAR FGTR I-HNL [8.9] RADAR 4000 GS 3.00° TCH 56 079° 2200 2200 1953 500 5000 hdg 200° HNL R-171 ALANA Use I-HNL DME when on the localizer course.	500 5000 hdg 200° HNL R-171 ALANA	500 5000 hdg 200° HNL R-171 ALANA	500 5000 hdg 200° HNL R-171 ALANA	500 5000 hdg 200° HNL R-171 ALANA	
8.8 NM 0.8 NM 5.9 NM					
CATEGORY S-ILS 8L	A	B	C	D	E
	213-1/2 200 (200-1/2)				

PAC, 11 JUL 2024 to 05 SEP 2024

PAC, 11 JUL 2024 to 05 SEP 2024