

(BAMBO.INOY11) 20030

AL-754 (FAA)

DANIEL K INOUE INTL (HNL) (PHNL)
HONOLULU, HAWAII

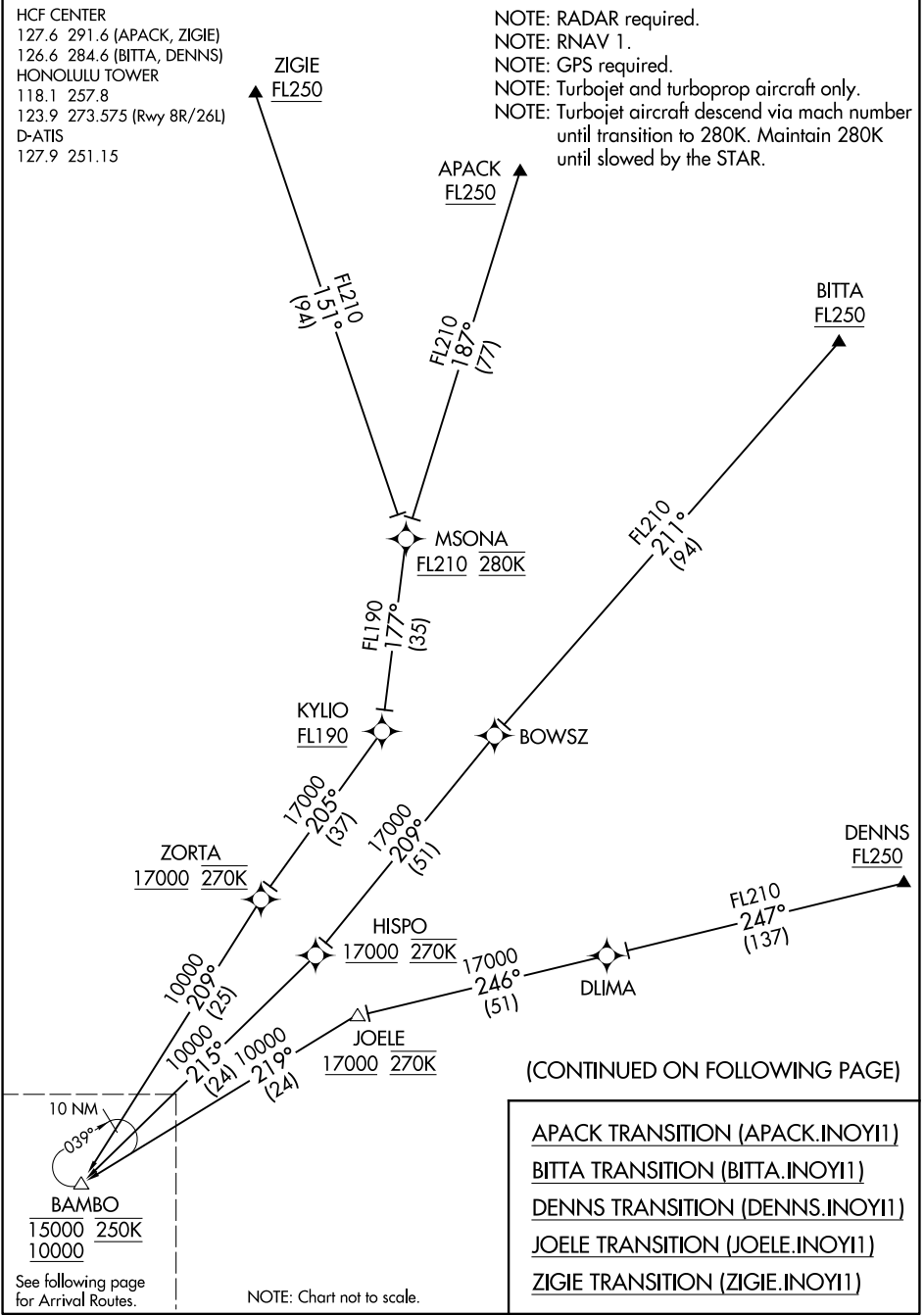
INOYI ONE ARRIVAL (RNAV) Transition Routes

HCF CENTER
127.6 291.6 (APACK, ZIGIE)
126.6 284.6 (BITTA, DENNS)
HONOLULU TOWER
118.1 257.8
123.9 273.575 (Rwy 8R/26L)
D-ATIS
127.9 251.15

NOTE: RADAR required.
NOTE: RNAV 1.
NOTE: GPS required.
NOTE: Turbojet and turboprop aircraft only.
NOTE: Turbojet aircraft descend via mach number until transition to 280K. Maintain 280K until slowed by the STAR.

PAC, 11 JUL 2024 to 05 SEP 2024

PAC, 11 JUL 2024 to 05 SEP 2024



See following page for Arrival Routes.

NOTE: Chart not to scale.

INOYI ONE ARRIVAL (RNAV) Transition Routes

(BAMBO.INOY11) 30JAN20

HONOLULU, HAWAII

DANIEL K INOUE INTL (HNL) (PHNL)