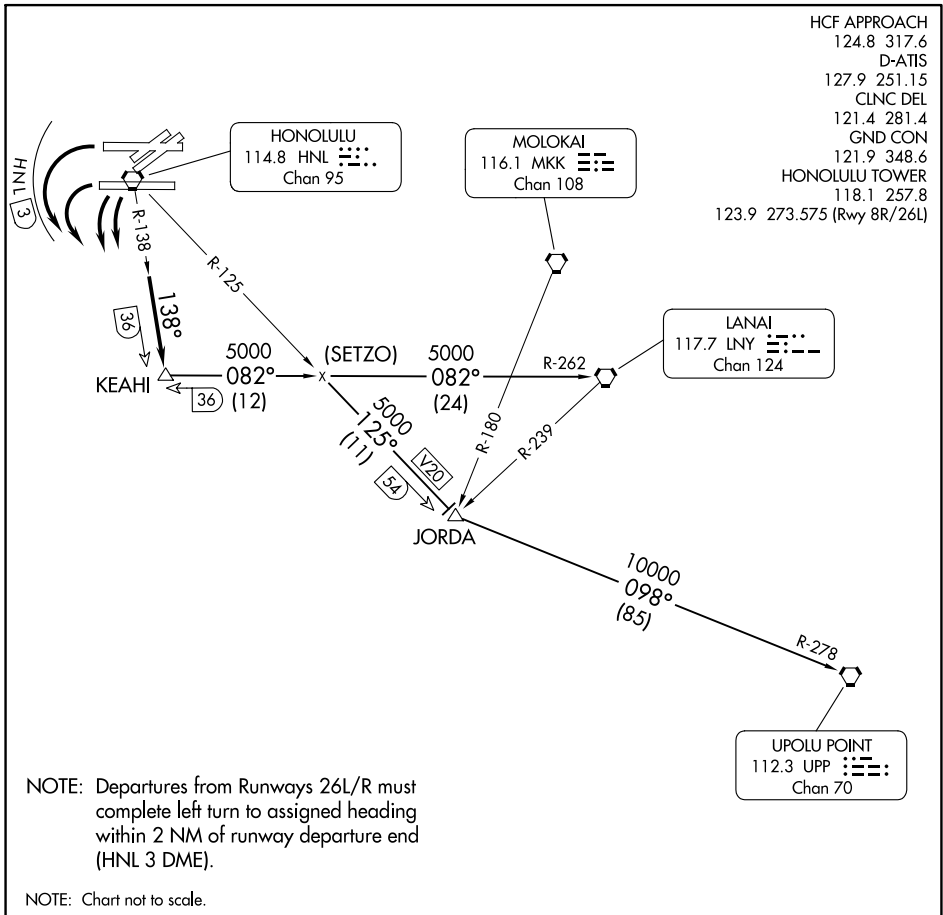


KEAHI THREE DEPARTURE



PAC, 11 JUL 2024 to 05 SEP 2024

PAC, 11 JUL 2024 to 05 SEP 2024

DEPARTURE ROUTE DESCRIPTION

TAKEOFF RUNWAYS 22/26 ONLY: Turn left to heading assigned by tower, expect RADAR vectors to intercept HNL R-138; then via HNL R-138 to KEAHI INT, maintain 5000'; then via (transition). Expect clearance to enroute altitude/flight level at JORDA INT or LNY VORTAC.

JORDA TRANSITION (KEAH13.JORDA): From over KEAHI INT via LNY R-262 and HNL R-125 to JORDA INT.

LANAI TRANSITION (KEAH13.LNY): From over KEAHI INT via LNY R-262 to LNY VORTAC.

UPOLO TRANSITION (KEAH13.UPP): From over KEAHI INT via LNY R-262 and HNL R-125 to JORDA INT, thence via UPP R-278 to UPP VORTAC.

KEAHI THREE DEPARTURE