

# KEOLA THREE DEPARTURE

## DEPARTURE ROUTE DESCRIPTION

Turn right/left to heading assigned by the Tower, expect vectors to KEOLA, maintain 5000; then on transition. Expect clearance to enroute altitude/flight level at KEOLA.

**KATHS TRANSITION (KEOLA3.KATHS):** From over KEOLA on HNL R-258 and SOK R-234 to KATHS.

**LIHUE TRANSITION (KEOLA3.LIH):** From over KEOLA on SOK R-111 and LH R-148 to LIH VORTAC.

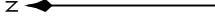
**LIJIA TRANSITION (KEOLA3.LIJA):** From over KEOLA on track 282° to LIJIA.

**NONNI TRANSITION (KEOLA3.NONNI):** From over KEOLA on HNL R-258 to NONNI.

**PUPPI TRANSITION (KEOLA3.PUPPI):** From over KEOLA on track 271° to PUPPI.

**SOUTH KAUAI TRANSITION (KEOLA3.SOK):** From over KEOLA on SOK R-111 to SOK VORTAC.

HCF APPROACH  
118.3 2690.0  
D-ATIS  
127.9 251.15  
CLNC DEL  
121.4 281.4  
GND CON  
121.9 348.6  
HONOLULU TOWER  
118.1 257.8  
123.9 273.575 (Rwy 8R/26L)

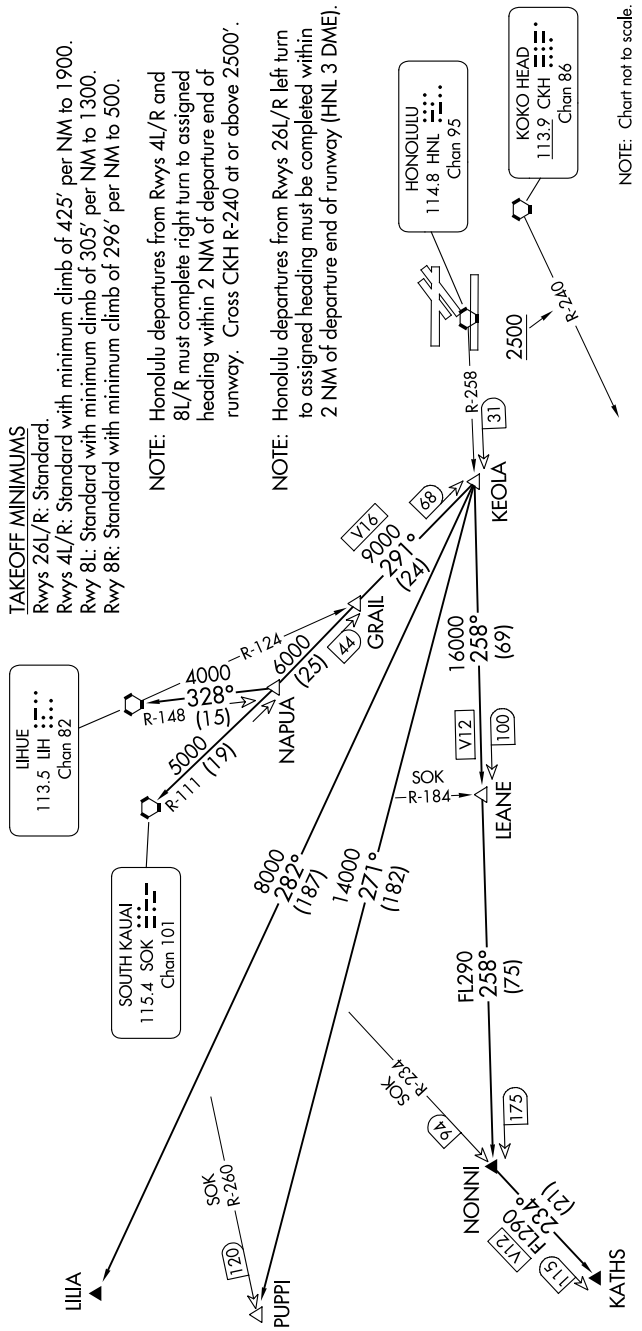


### TAKEOFF MINIMUMS

Rwys 26L/R: Standard.  
Rwys 4L/R: Standard with minimum climb of 425' per NM to 1900.  
Rwy 8L: Standard with minimum climb of 305' per NM to 1300.  
Rwy 8R: Standard with minimum climb of 296' per NM to 500.

NOTE: Honolulu departures from Rwys 4L/R and 8L/R must complete right turn to assigned heading within 2 NM of departure end of runway. Cross CKH R-240 at or above 2500'.

NOTE: Honolulu departures from Rwys 26L/R left turn to assigned heading must be completed within 2 NM of departure end of runway (HNL 3 DME).



NOTE: Chart not to scale.

# KEOLA THREE DEPARTURE