

KLANI THREE ARRIVAL (RNAV) Arrival Routes

PAC, 11 JUL 2024 to 05 SEP 2024

ARRIVAL ROUTE DESCRIPTION

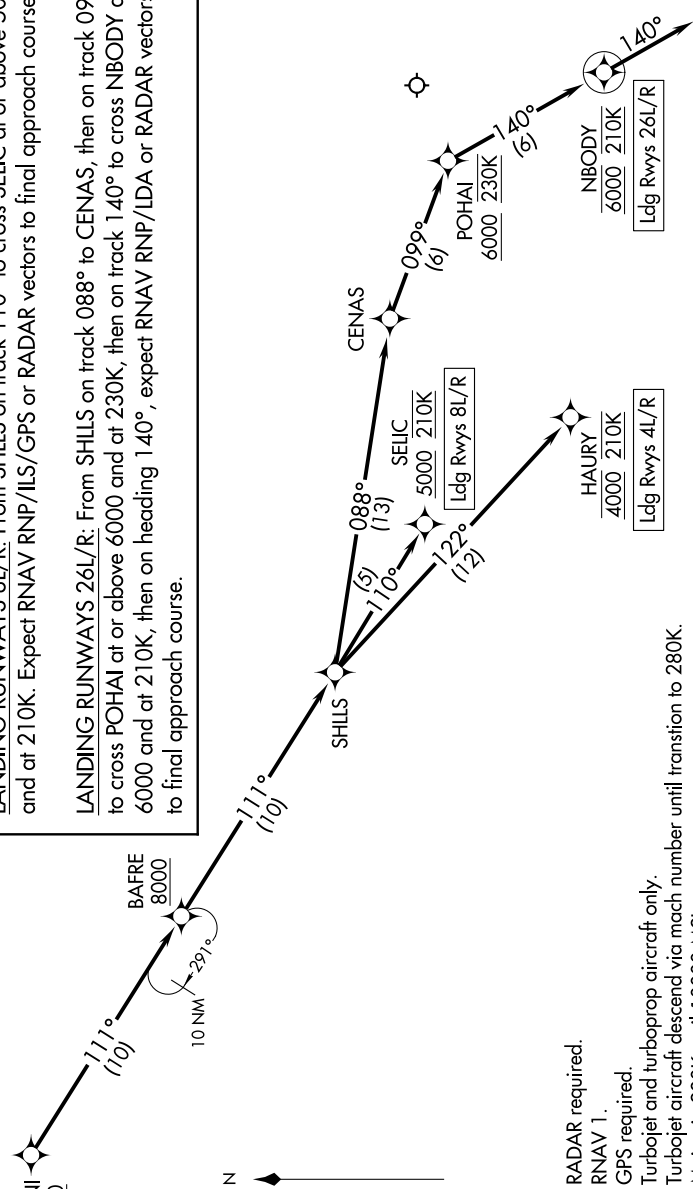
From KLANI on track 111° to cross BAFRE at or above 8000, then on track 111° to SHLLS.

LANDING RUNWAYS 4L/R: From SHLLS on track 122° to cross HAURY at 4000 and at 210K, expect RNAV RNP/ILS/GPS or RADAR vectors to final approach course.

LANDING RUNWAYS 8L/R: From SHLLS on track 110° to cross SELIC at or above 5000 and at 210K. Expect RNAV RNP/ILS/GPS or RADAR vectors to final approach course.

LANDING RUNWAYS 26L/R: From SHLLS on track 088° to CENAS, then on track 099° to cross POHAL at or above 6000 and at 230K, then on track 140° to cross NBODY at 6000 and at 210K, then on heading 140°, expect RNAV RNP/LDA or RADAR vectors to final approach course.

HCF CENTER
119.9 306.9
D-ATIS
127.9 251.15
HONOLULU TOWER
118.1 257.8
123.9 273.575 (Rwy 8R/26L)



NOTE: RADAR required.
NOTE: RNAV 1.
NOTE: GPS required.
NOTE: Turbojet and turboprop aircraft only.
NOTE: Turbojet aircraft descend via mach number until transition to 280K.
NOTE: Turbojet aircraft descend via mach number until transition to 280K.
Maintain 280K until 10000 MSL.

NOTE: Chart not to scale.

PAC, 11 JUL 2024 to 05 SEP 2024