

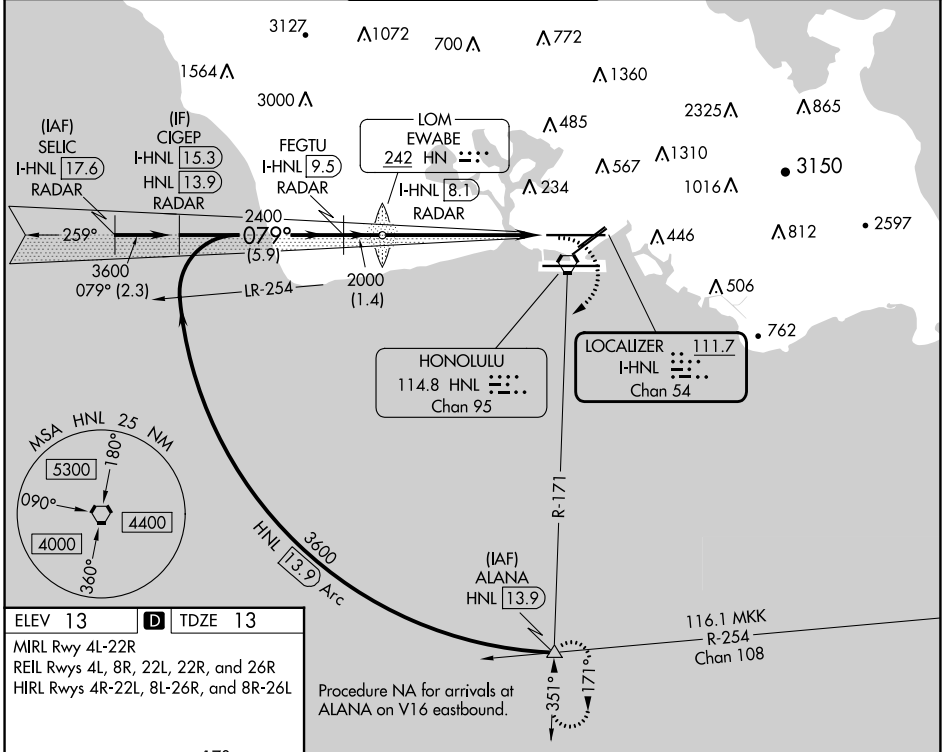
LOC/DME I-HNL <b>111.7</b> Chan 54	APP CRS <b>079°</b>	Rwy Idg <b>12312</b> TDZE <b>13</b> Apt Elev <b>13</b>
--	------------------------	--

# LOC RWY 8L

DANIEL K INOUEY INTL (HNL) (PHNL)

DME or RADAR required.		MALSR 	MISSED APPROACH: Climbing right turn to 5000 on heading 200° and HNL VORTAC R-171 to ALANA INT/HNL 13.9 DME and hold, continue climb-in-hold to 5000.
<p><b>▼</b> Circling Rwy 22R NA at night. Circling NA for Cats A and B northwest of Rwy 8L and 22R and for Cats C and D north of Rwy 8L-26R. Circling NA to sea lanes 4W, 8W, 22W and 26W. For inop ALS, increase S-LOC 8L Cats C and D visibility to 1 3/8 SM.</p>			

D-ATIS <b>127.9 251.15</b>	HCF APPROACH <b>118.3 269.0</b>	HONOLULU TOWER <b>118.1 257.8</b> <b>123.9 273.575</b> (Rwy 8R/26L)	GND CON <b>121.9 348.6</b>	CLNC DEL <b>121.4 281.4</b>
-------------------------------	------------------------------------	---	-------------------------------	--------------------------------



ELEV 13	<b>D</b> TDZE 13
MIRL Rwy 4L-22R	
REIL Rws 4L, 8R, 22L, 22R, and 26R	
HIRL Rws 4R-22L, 8L-26R, and 8R-26L	

163 170 22R

12360 X 200

953

266R

200

150

190 TWR

12000 X 200

WATER RWYS:

8W-26W 5090 X 300

4W-22W 3000 X 150

FAF to MAP 5.9 NM

Knots	60	90	120	150	180
Min:Sec	5:54	3:56	2:57	2:22	1:58

**C** CIRCLING

CIGEP I-HNL [15.3] RADAR	VGSi and descent angles not coincident (VGSi Angle 3.00/TCH 73).		5000 hdg 200°	HNL R-171	ALANA $\Delta$
FEGTU I-HNL [9.5] RADAR	EWABE LOM I-HNL [8.1] RADAR	Use I-HNL DME when on the localizer course.			
079°		3.08° TCH 56	I-HNL [3.4]	I-HNL [2.2]	
2400		2000			
5.9 NM		1.4 NM	4.7 NM	1.2 NM	
CATEGORY	A	B	C	D	
S-8L	480-1/2	467 (500-1/2)	480-1	467 (500-1)	
<b>C</b> CIRCLING	680-1	667 (700-1)	820-2 1/4	1280-3	
			807 (900-2/4)	1267 (1300-3)	

# LOC RWY 8L

PAC, 11 JUL 2024 to 05 SEP 2024

PAC, 11 JUL 2024 to 05 SEP 2024