

# OPIHI THREE DEPARTURE

AL-754 (FAA)

DANIEL K INOUYE INTL (HNL) (PHNL)  
HONOLULU, HAWAII

PAC, 11 JUL 2024 to 05 SEP 2024

**NOTE:** Honolulu departures from Rwy 4L/R and 8L/R must complete right turn to assigned heading within 2 NM of departure end of runway. Cross CKH R-240 at or above 2500.

**NOTE:** Honolulu departures Rwy 26L/R left turn to assign heading must be completed within 2 NM of departure end of runway (HNL 3 DME).

**HCF APPROACH**  
118.3 269.0  
D-ATIS  
127.9 251.15  
CLNC DEL  
121.4 281.4  
GND CON  
121.9 348.6  
HONOLULU TOWER  
118.1 257.8  
123.9 273.575 (Rwy 8R/26L)



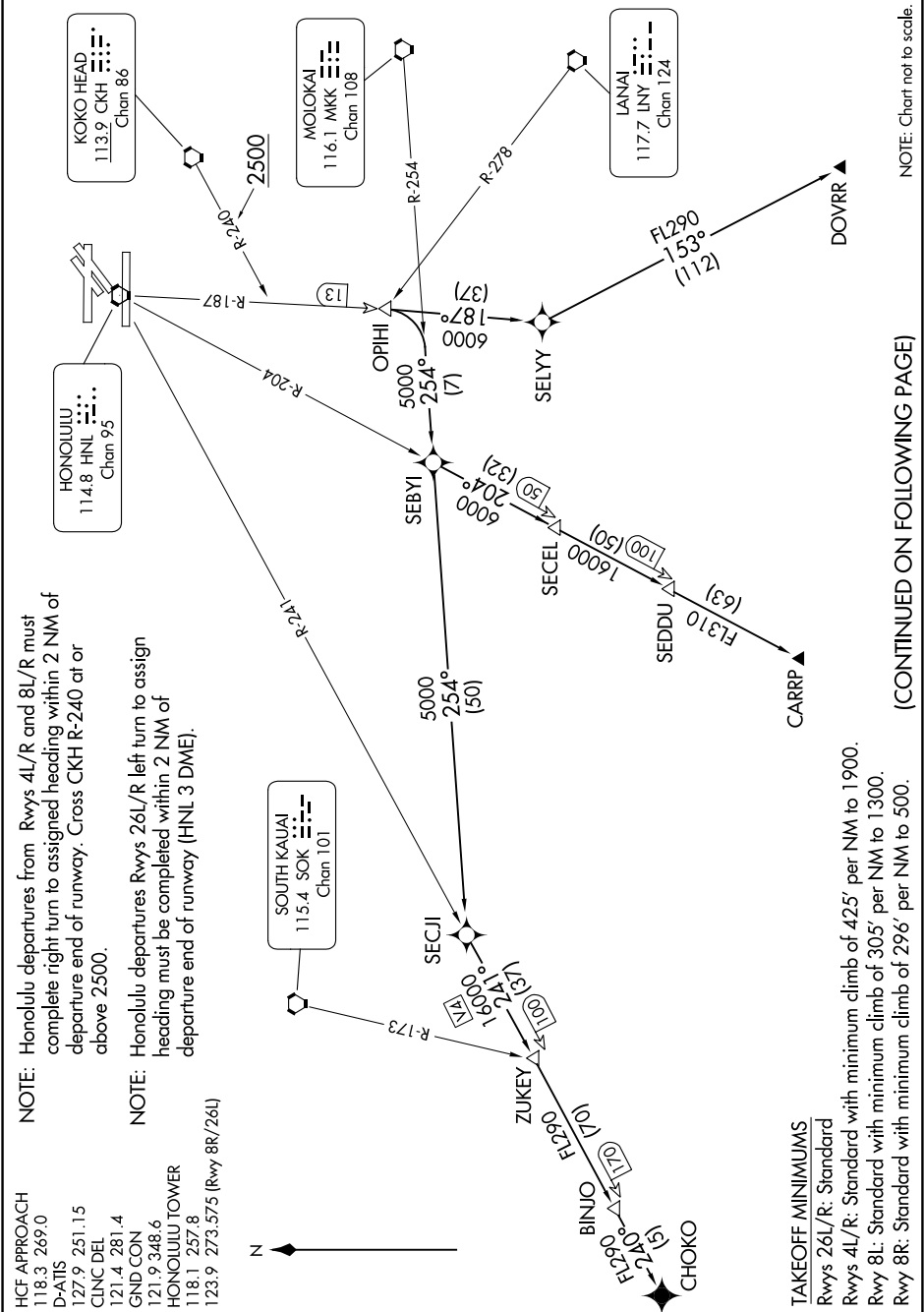
SOUTH KAUIAI  
115.4 SOK  
Chan 101

HONOLULU  
114.8 HNL  
Chan 95

KOKO HEAD  
113.9 CKH  
Chan 86

MOLOKAI  
116.1 MKK  
Chan 108

LANAI  
117.7 LNY  
Chan 124



NOTE: Chart not to scale.

(CONTINUED ON FOLLOWING PAGE)

PAC, 11 JUL 2024 to 05 SEP 2024

# OPIHI THREE DEPARTURE

HONOLULU, HAWAII  
DANIEL K INOUYE INTL (HNL) (PHNL)

**TAKEOFF MINIMUMS**  
Rwys 26L/R: Standard  
Rwys 4L/R: Standard with minimum climb of 425' per NM to 1900.  
Rwy 8L: Standard with minimum climb of 305' per NM to 1300.  
Rwy 8R: Standard with minimum climb of 296' per NM to 500.