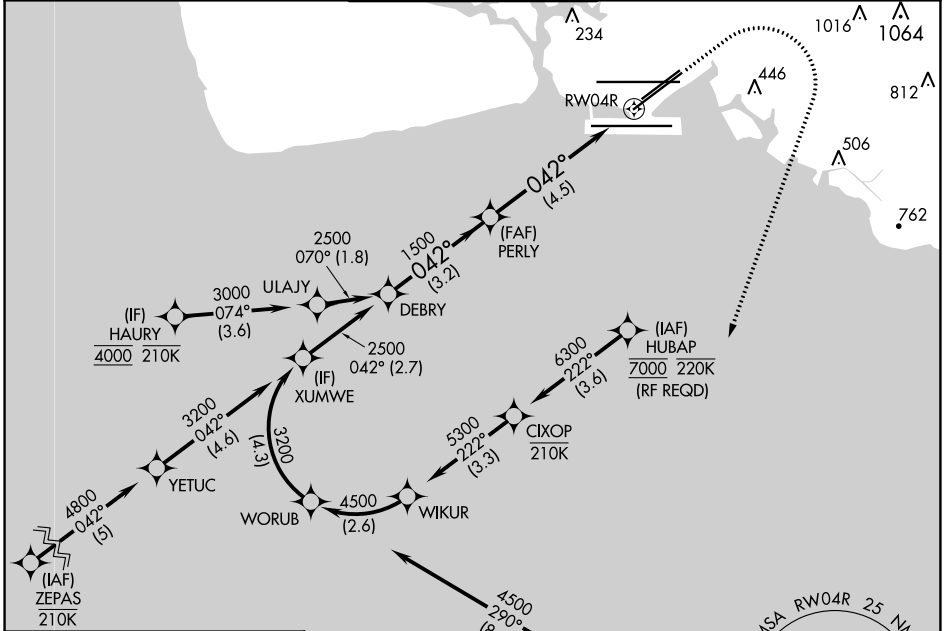


APP CRS	Rwy Idg	8950
042°	TDZE	9
	Apt Elev	13

RNAV (RNP) Z RWY 4R

DANIEL K INOUEY INTL (HNL) (PHNL)

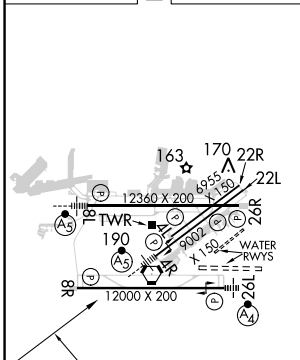
RNP AR APCH.		MALSR	MISSED APPROACH: Climb to 580 then climbing right turn to 3000 direct ALANA and hold.	
▼ For uncompensated Baro-VNAV systems, procedure NA below 17°C or above 54°C. For inop ALS, increase RNP 0.30 Cat A visibility to ¾ SM and Cat B to ½ SM.				
D-ATIS	HCF APPROACH	HONOLULU TOWER	GND CON	CLNC DEL
127.9 251.15	118.3 269.0	118.1 257.8 123.9 273.575 (Rwy 8R/26L)	121.9 348.6	121.4 281.4



PAC, 11 JUL 2024 to 05 SEP 2024

PAC, 11 JUL 2024 to 05 SEP 2024

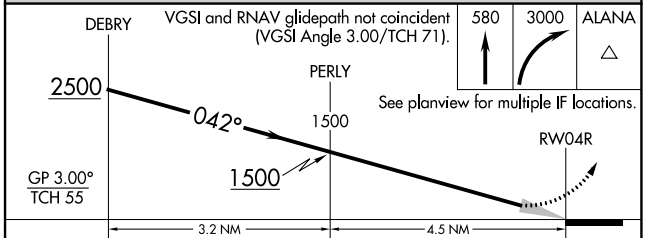
ELEV	13	D	TDZE	9
------	-----------	----------	------	----------



WATER RWYS:
8W-26W 5090 X 300
4W-22W 3000 X 150

MIRL Rwy 4L-22R
REIL Rwys 4L, 8R, 22L, 22R, and 26R
HIRL Rwys 4R-22L, 8L-26R, and 8R-26L

Procedure NA for arrivals at ALANA on V8-21 southbound and on V16 southeast bound.



CATEGORY	A	B	C	D
RNP 0.30 DA	259-½ 250 (300-½)	277-½ 268 (300-½)	432-¾	423 (500-¾)

AUTHORIZATION REQUIRED