

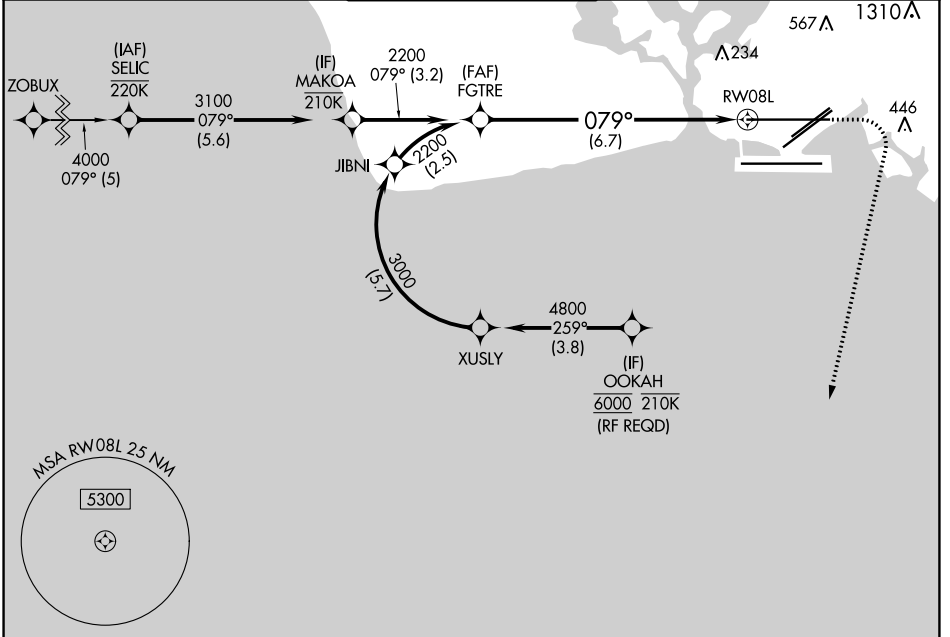
APP CRS	Rwy Idg	<b>12312</b>
<b>079°</b>	TDZE	<b>13</b>
	Apt Elev	<b>13</b>

# RNAV (RNP) Z RWY 8L

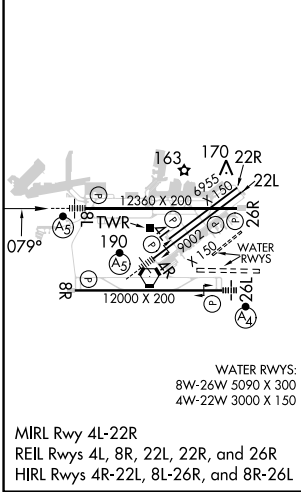
DANIEL K INOUE INTL (HNL) (PHNL)

RNP AR APCH - GPS.		MALSR	MISSED APPROACH: Climb to 420 then climbing right turn to 3000 direct ALANA and hold.
For uncompensated Baro-VNAV systems, procedure NA below 17°C or above 54°C. For inop ALS, increase RNP 0.15 DA all Cats visibility to ½ SM.			

D-ATIS	HCF APPROACH	HONOLULU TOWER	GND CON	CLNC DEL
<b>127.9 251.15</b>	<b>118.3 269.0</b>	<b>118.1 257.8</b> <b>123.9 273.575</b> (Rwy 8R/26L)	<b>121.9 348.6</b>	<b>121.4 281.4</b>



ELEV 13	<b>D</b>	TDZE 13
---------	----------	---------



MAKOA VGSi and RNAV glidepath not coincident (VGSi Angle 3.00/TCH 73). FGTR 3100 079° 2200 GP 3.00° TCH 56 RWY 8L See planview for multiple IF locations.				
GP 3.00° TCH 56	3.2 NM	6.7 NM		
CATEGORY	A	B	C	D
RNP 0.15 DA		285-½ 272 (300-½)		
RNP 0.30 DA		347-½ 334 (400-½)		

**AUTHORIZATION REQUIRED**

PAC, 11 JUL 2024 to 05 SEP 2024

PAC, 11 JUL 2024 to 05 SEP 2024