

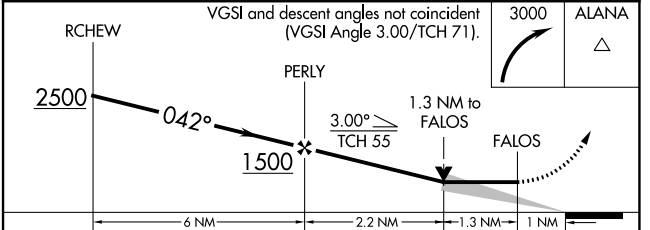
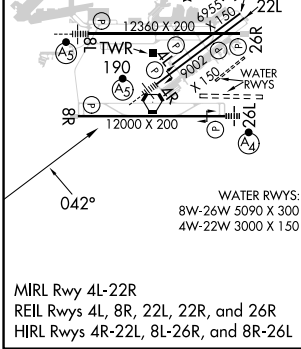
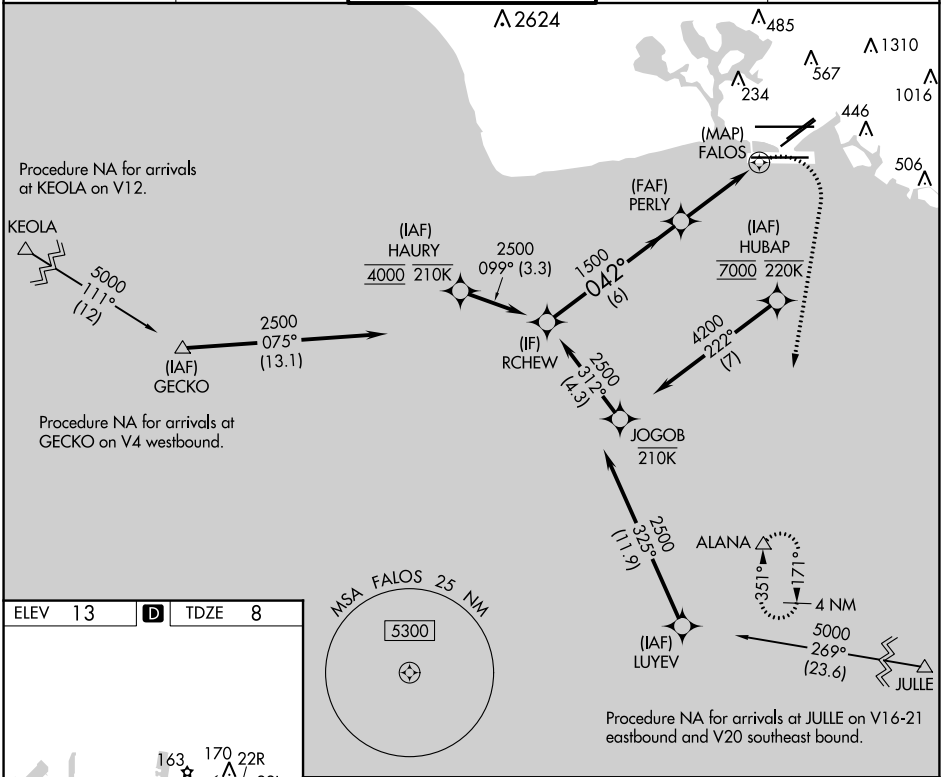
APP CRS	Rwy Idg	8950
042°	TDZE	8
	Apt Elev	13

RNAV (GPS) Y RWY 4R

DANIEL K INOUEY INTL (HNL) (PHNL)

RNP APCH.	MALSR	MISSED APPROACH: Climbing right turn to 3000 direct ALANA and hold.
<p>▼ Circling Rwy 22R NA at night. Circling NA for Cats A and B northwest of Rwy 8L and 22R. Circling NA for Cats C and D north of Rwy 8L-26R. For inop ALS, increase LNAV Cat E visibility to 2 SM. Circling NA to sea lanes 4W, 8W, 22W, and 26W. HUBAP transition NA for Cat E aircraft. HAURY transition NA for Cat E aircraft.</p>		

D-ATIS 127.9 251.15	HCF APPROACH 118.3 269.0	HONOLULU TOWER 118.1 257.8 123.9 273.575 (Rwy 8R/26L)	GND CON 121.9 348.6	CLNC DEL 121.4 281.4
-------------------------------	------------------------------------	---	-------------------------------	--------------------------------



CATEGORY	A	B	C	D	E
LNAV MDA	460- ³ / ₄	452 (500- ³ / ₄)	460- ⁷ / ₈	452 (500- ⁷ / ₈)	460- ¹ / ₄ 452 (500- ¹ / ₄)
C CIRCLING	680-1 ¹ / ₄ 667 (700-1 ¹ / ₄)	760-1 ¹ / ₄ 747 (800-1 ¹ / ₄)	820-2 ¹ / ₄ 807 (900-2 ¹ / ₄)	1400-3 1387 (1400-3)	NA

PAC, 11 JUL 2024 to 05 SEP 2024

PAC, 11 JUL 2024 to 05 SEP 2024