

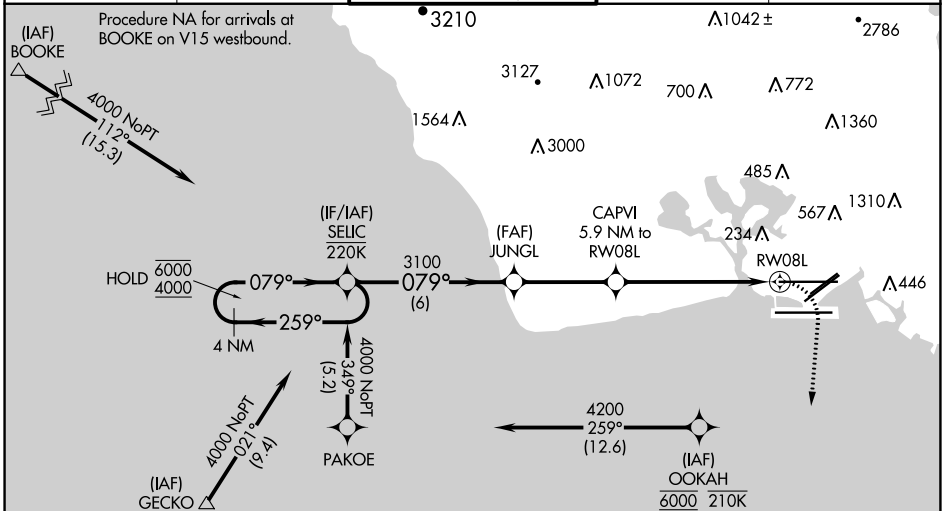
APP CRS	Rwy Idg	<b>12312</b>
<b>079°</b>	TDZE	<b>13</b>
	Apt Elev	<b>13</b>

# RNAV (GPS) Y RWY 8L

DANIEL K INOUEY INTL (HNL) (PHNL)

RNP APCH - GPS.	MALSRL 	MISSED APPROACH: Climbing right turn to 3600 direct ALANA and hold, continue climb-in-hold to 3600.
<p><b>⚠</b> Circling Rwy 22R NA at night. For inop ALS, increase Cats C, D, and E visibility to 1 3/8 SM. Circling NA to sea lanes 4W, 8W, 22W, and 26W. Circling NA for Cats A and B northwest of Rwy 8L-22R. Circling NA for Cats C and D north of Rwy 8L-26R. OOKAH transition Rwy for Cat E aircraft. Cat E restricted to USAF/USN aircraft</p>		

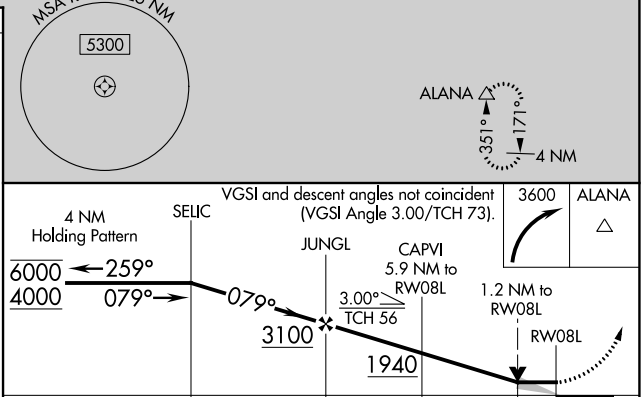
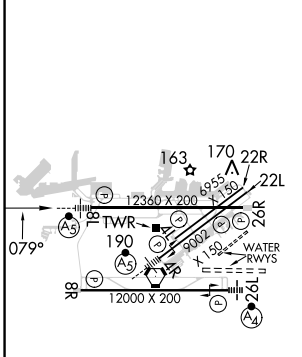
D-ATIS <b>127.9 251.15</b>	HCF APPROACH <b>118.3 269.0</b>	HONOLULU TOWER <b>118.1 257.8</b> <b>123.9 273.575</b> (Rwy 8R/26L)	GND CON <b>121.9 348.6</b>	CLNC DEL <b>121.4 281.4</b>
-------------------------------	------------------------------------	---	-------------------------------	--------------------------------



PAC, 11 JUL 2024 to 05 SEP 2024

PAC, 11 JUL 2024 to 05 SEP 2024

ELEV 13	<b>D</b>	TDZE 13
---------	----------	---------



CATEGORY	A	B	C	D	E
LNNAV MDA	480-1/2	467 (500-1/2)	480-1 467 (500-1)		
<b>C</b> CIRCLING	680-1	667 (700-1)	820-2 1/4 807 (900-2 1/4)	1280-3 1267 (1300-3)	NA