

SC-2, 08 AUG 2024 to 05 SEP 2024

**TOP ALTITUDE:
 ASSIGNED BY ATC**

REGIONAL DEP CON
 124.3 282.275
 ATIS
 133.4
 CINC DEL
 119.55
 GND CON
 121.6
 ADDISON TOWER *
 126.0 (CTAF) 239.0

TAKEOFF MINIMUMS

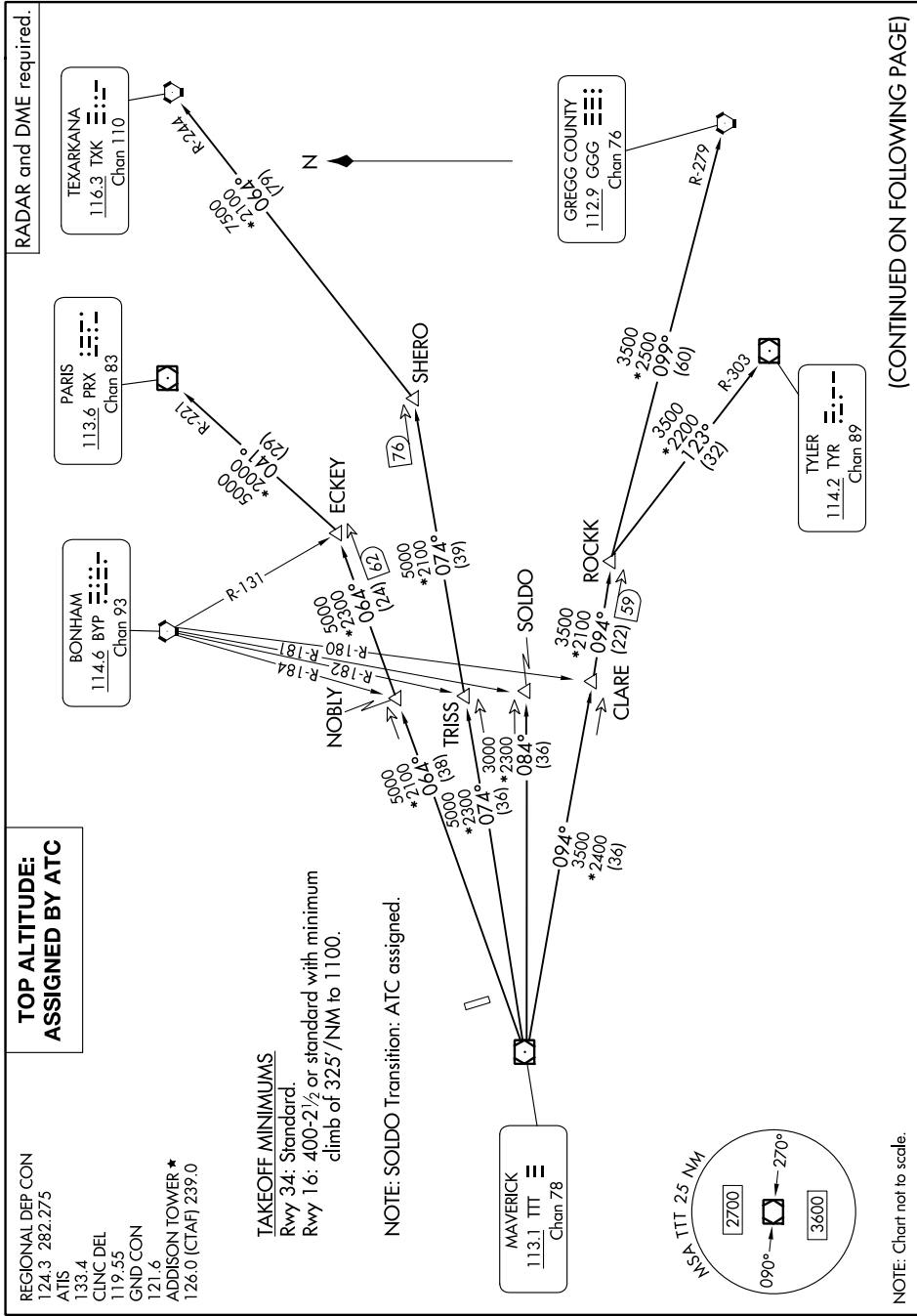
Rwy 34: Standard.
 Rwy 16: 400-2½ or standard with minimum
 climb of 325'/NM to 1100.

NOTE: SOLDO Transition: ATC assigned.

RADAR and DME required.

(CONTINUED ON FOLLOWING PAGE)

SC-2, 08 AUG 2024 to 05 SEP 2024



NOTE: Chart not to scale.