

WAAS CH <b>81921</b> <b>W09A</b>	APP CRS <b>089°</b>	Rwy Idg TDZE Apt Elev	<b>5401</b> <b>795</b> <b>819</b>
--	------------------------	-----------------------------	---

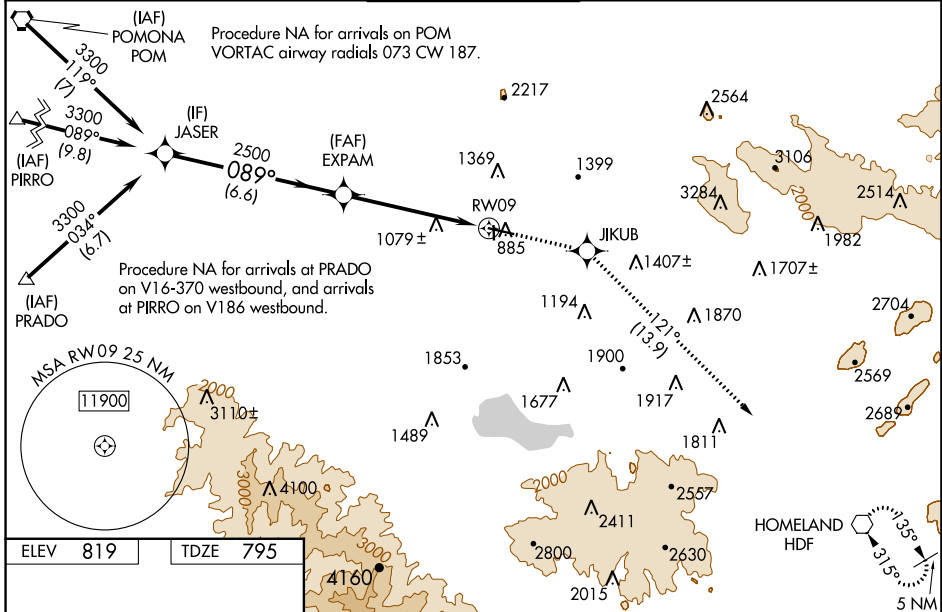
# RNAV (GPS) RWY 9

RIVERSIDE MUNI (RAL)

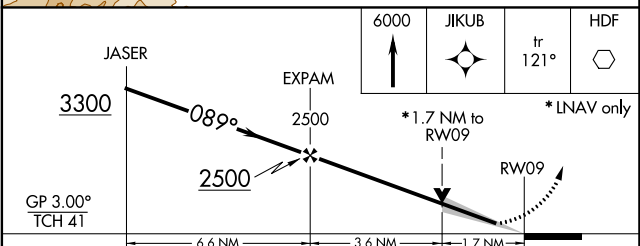
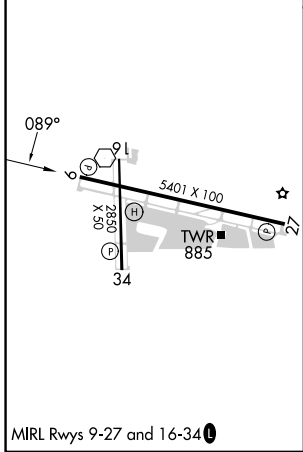
**⚠** DME/DME RNP-0.3 NA. When local altimeter setting not received, use Chino altimeter setting and increase all DA 46 feet and all MDA 60 feet and increase LPV all Cats and Circling Cats C and D visibility ¼ mile and LNAV/VNAV all Cats and LNAV Cats C and D visibility ½ mile. VDP and Baro-VNAV NA with Chino altimeter setting. For uncompensated Baro-VNAV systems, LNAV/VNAV NA below -16°C (4°F) or above 54°C (130°F). Circling NA for Cat D north of Rwy 9-27.

**⚠** MISSED APPROACH: Climb to 6000 direct JIKUB and on track 121° to HDF VOR and hold, continue climb-in-hold to 6000.

ATIS <b>128.8</b>	SOCAL APP CON <b>135.4 377.125</b>	<b>RIVERSIDE TOWER *</b> <b>121.0 (CTAF) 257.8</b>	GND CON <b>124.12</b>	UNICOM <b>122.95</b>
----------------------	---------------------------------------	---	--------------------------	-------------------------



ELEV 819	TDZE 795
----------	----------



CATEGORY	A	B	C	D
LPV DA		1127-1½	332 (400-1½)	
LNAV/VNAV DA		1461-2½	666 (700-2½)	
LNAV MDA	1340-1	545 (600-1)	1340-1½	545 (600-1½)
CIRCLING	1340-1 521 (600-1)	1680-1¼ 861 (900-1¼)	1800-3 981 (1000-3)	1960-3 1141 (1200-3)

SW-3, 08 AUG 2024 to 05 SEP 2024

SW-3, 08 AUG 2024 to 05 SEP 2024