

HI-ILS or LOC/DME RWY 12

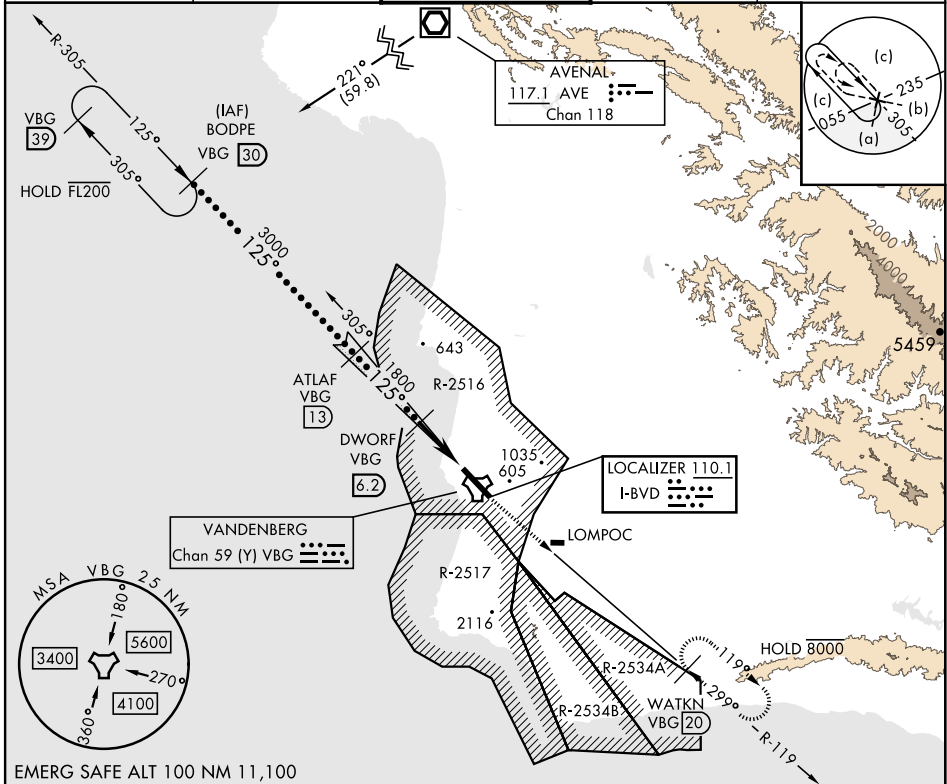
LOC I-BVD 110.1	APCH CRS 125°	Rwy Idg 15,000 TDZE 265 Arprt Elev 368	[USSF]	VANDENBERG SFB (KVBG)
---------------------------	-------------------------	---	--------	-----------------------

DME required

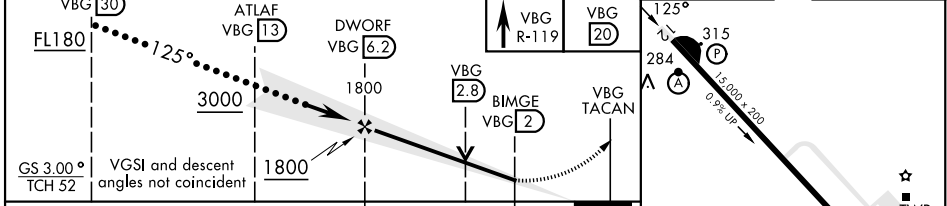
ALSF-2

MISSED APPROACH: Climb out VBG TACAN R-119 until 20 DME (WATKN) and hold. Continue climb in hold maintain 7000.

ATIS 133.125 257.975	SANTA BARBARA APP/DEP CON 124.15 327.8	TOWER ★ 124.95 0 (CTAF) 326.2	GND CON 121.75 275.8	CLNC DEL 121.75 275.8
--------------------------------	---	--	--------------------------------	---------------------------------



EMERG SAFE ALT 100 NM 11,100



CATEGORY	C	D	E
S-ILS 12 *	465/24	200 (100-½)	
S-LOC/DME 12 **	700/40	435 (400-¾)	
CIRCLING	1020-1¾ 652 (700-1¾)	1180-2¾ 812 (900-2¾)	1560-3 1192 (1200-3)

LOMPOC, CALIFORNIA 34°44'N-120°35'W VANDENBERG SFB (KVBG)

Amdt 4 13JUN24

HI-ILS or LOC/DME RWY 12

SW-3, 08 AUG 2024 to 05 SEP 2024

SW-3, 08 AUG 2024 to 05 SEP 2024