

ILS or LOC/DME RWY 12

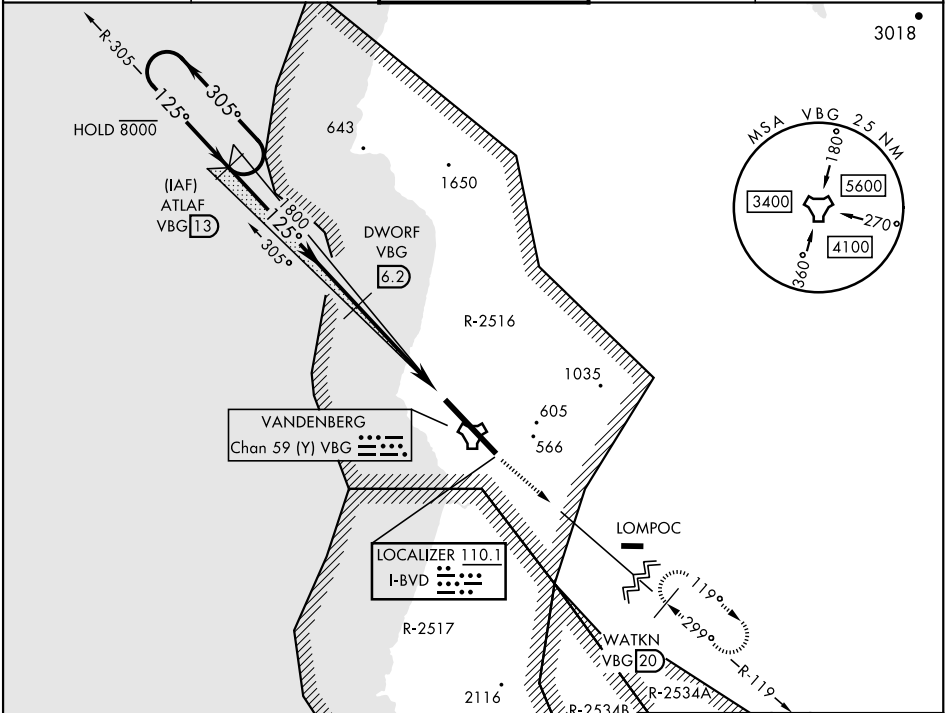
LOC I-BVD 110.1	APCH CRS 125°	Rwy Idg 15,000 TDZE 265 Arprt Elev 368
---------------------------	-------------------------	---

[USSF]

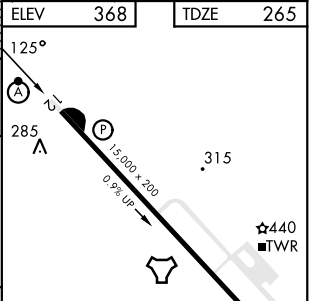
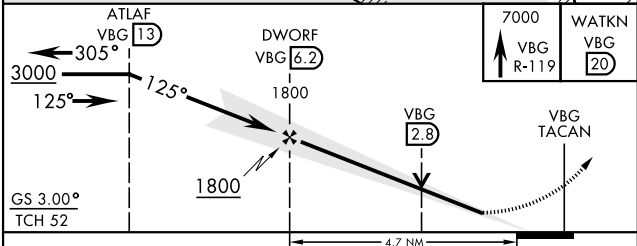
VANDENBERG SFB (KVBG)

DME required ▼ *When ALS inop, increase RVR to 40 and vis to 3/4 mile. **When ALS inop, increase CAT AB RVR to 55 and vis to 1 mile, CAT CDE vis to 1 1/4 miles.	ALSF-2 	MISSED APPROACH: Climb out VBG TACAN R-119 until 20 DME (WATKN) and hold. Continue climb in hold maintain 7000.
--	------------	---

ATIS 133.125 257.975	SANTA BARBARA APP/DEP CON 124.15 327.8	TOWER ★ 124.95 (CTAF) 326.2	GND CON 121.75 275.8	CLNC DEL 121.75 275.8
--------------------------------	--	--	--------------------------------	---------------------------------



EMERG SAFE ALT 100 NM 11,100	ELEV 368	TDZE 265
------------------------------	----------	----------



CATEGORY	A	B	C	D	E
S-ILS 12 *	465/24		200	(100-1/2)	
S-LOC/DME 12 **	700/24	435 (400-1/2)	700/40	435 (400-3/4)	
Ⓢ CIRCLING	980-1 612 (700-1)	1000-1 632 (700-1)	1020-1 3/4 652 (700-1 3/4)	1180-2 3/4 812 (900-2 3/4)	1560-3 1192 (1200-3)

HIRL Rwy 12-30	FAF to MAP 4.7 NM				
Knots	60	90	120	150	180
Min:Sec	4:42	3:08	2:21	1:53	1:34

ILS or LOC/DME RWY 12

SW-3, 08 AUG 2024 to 05 SEP 2024

SW-3, 08 AUG 2024 to 05 SEP 2024