

MARYSVILLE, CALIFORNIA

RNAV (GPS) RWY 33

APCH CRS 325°	Rwy Idg THRE Arprt Elev 12,001 105 113
-------------------------	--

- (USAF)

BEALE AFB (KBAB)

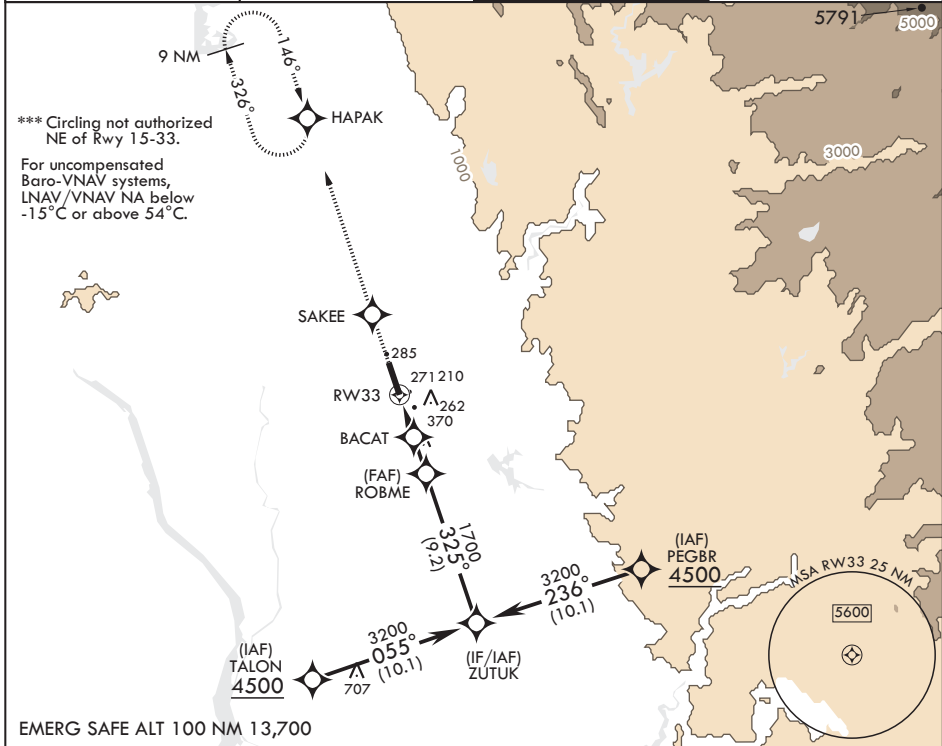
RNP APCH



MISSED APPROACH: Climb to 3600 direct SAKEE, track 326° to HAPAK and hold.

▼ * When ALS inop, increase vis to 1 1/4 miles.
** When ALS inop, increase CAT AB RVR to 55 and vis to 1 mile, CAT CDE vis to 1 1/4 miles.

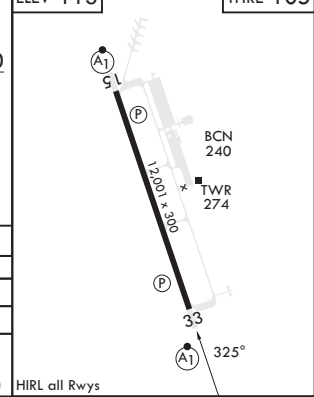
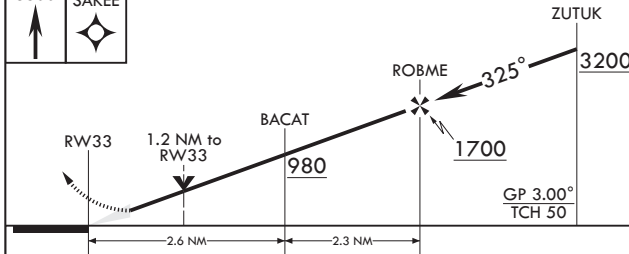
ATIS★ 124.55 273.5	NORCAL APP CON 125.4 259.1	TOWER★ 119.4 284.75	GND CON 121.6 257.75
------------------------------	--------------------------------------	-------------------------------	--------------------------------



SW-2, 08 AUG 2024 to 05 SEP 2024

SW-2, 08 AUG 2024 to 05 SEP 2024

EMERG SAFE ALT 100 NM 13,700



CATEGORY	A	B	C	D	E
LNAV/VNAV DA*	540/40		435	(500-¾)	
LNAV MDA**	540/24	435 (500-½)	540/40	435	(500-¾)
☐ CIRCLING***	600-1	487 (500-1)	600-1½ 487 (500-1½)	800-2¼ 687 (700-2¼)	800-2½ 687 (700-2½)

HIRL all Rwys

MARYSVILLE, CALIFORNIA

39°08'N - 121°26'W

BEALE AFB (KBAB)

Amdt 2 22FEB24

RNAV (GPS) RWY 33