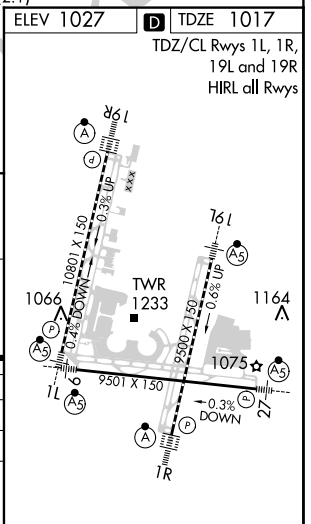
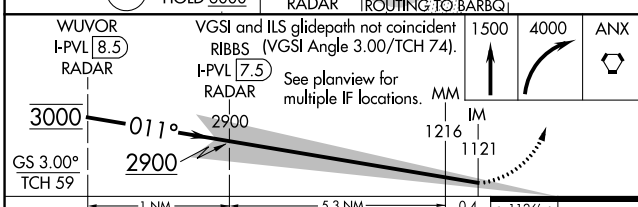
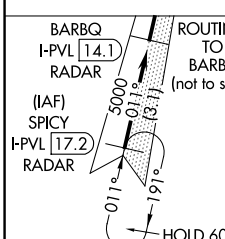
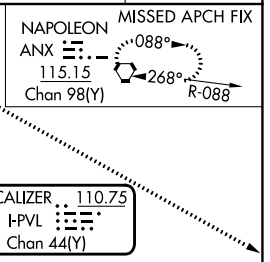
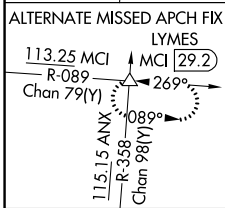
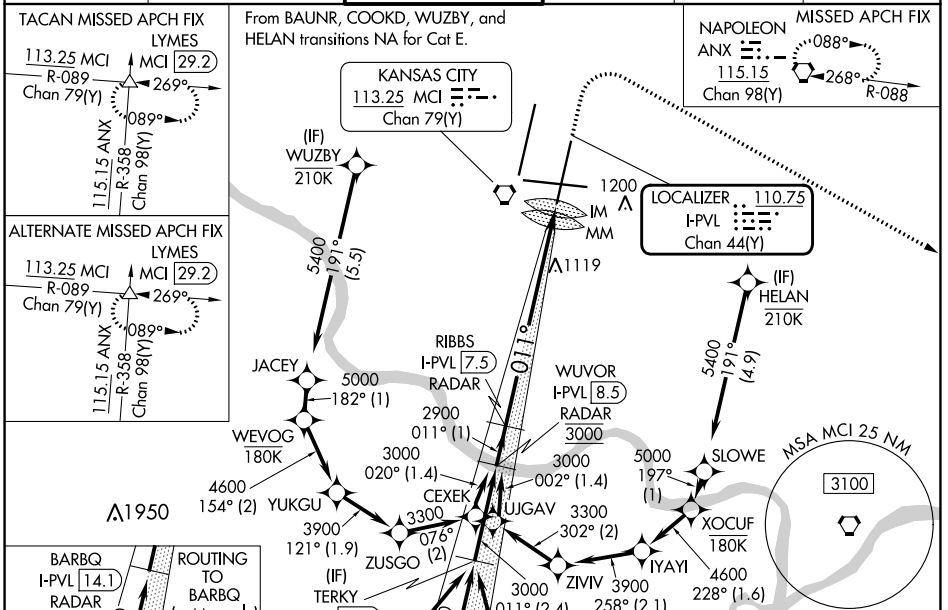


LOC/DME I-PVL 110.75 Chan 44 (Y)	APP CRS 011°	Rwy Idg TDZE Apt Elev 9500 1017 1027
---	------------------------	--

ILS RWY 1R (CAT II & III)

KANSAS CITY INTL (MCI)

RNP APCH - GPS. From BAUNR or COOKD or WUZBY or HELAN.		ALSF-2 	MISSED APPROACH: Climb to 1500 then climbing right turn to 4000 direct ANX VORTAC and hold. (TACAN aircraft) Climb to 1500 then climbing right turn to 4000 on heading 130° and MCI R-089 to LYMES INT/MCI 29.2 DME and hold.		
DME or RADAR required. RADAR required for procedure entry at SPICY.					
<p>Simultaneous approach authorized except from BAUNR, COOKD, WUZBY, and HELAN. CAT II: RVR 1000 authorized with specific OPSPEC, MSPEC, or LOA approval and use of autoland or HUD to touchdown.</p>					
D-ATIS 128.375	KANSAS CITY APP CON 120.95 318.1	INTERNATIONAL TOWER 128.2 254.25	GND CON 121.8	CLNC DEL 135.7	CPDLC



WUVOR I-PVL 8.5 RADAR	VGSI and ILS glidepath not coincident RIBBS (VGSI Angle 3.00/TCH 74).	1500	4000	ANX	
3000	I-PVL 7.5 RADAR	2900	IM		
GS 3.00° TCH 59	See planview for multiple IF locations.	1216	1121		
		1 NM	5.3 NM	0.4	
CATEGORY	A	B	C	D	E
S-ILS 1R	CAT II RA 111/12 100 DA 1117				
S-ILS 1R	CAT III RVR 06				

CATEGORY II & III ILS - SPECIAL AIRCREW & AIRCRAFT CERTIFICATION REQUIRED

NC-3, 08 AUG 2024 to 05 SEP 2024

NC-3, 08 AUG 2024 to 05 SEP 2024