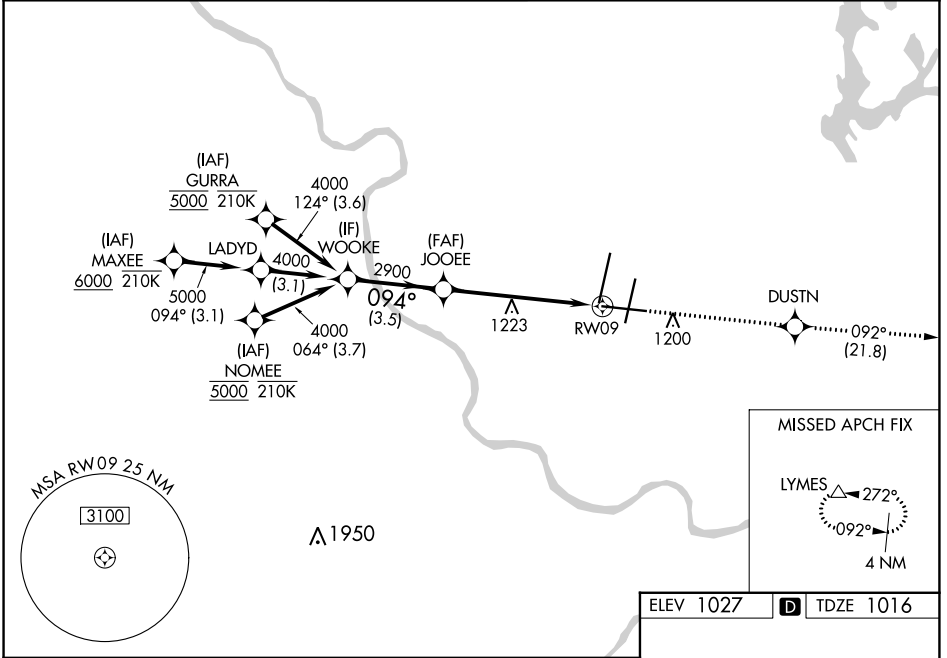


WAAS CH 56608 W09A	APP CRS 094°	Rwy Idg TDZE Apt Elev	9501 1016 1027
--	------------------------	-----------------------------	---

RNAV (GPS) Y RWY 9

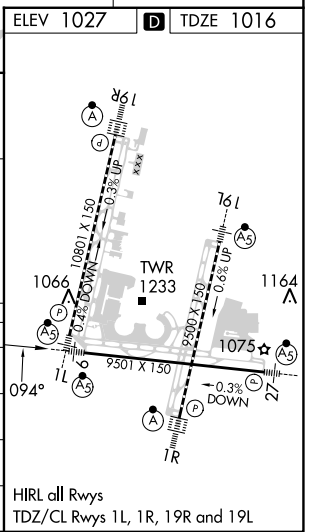
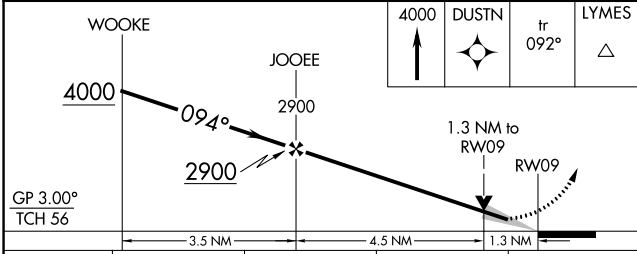
KANSAS CITY INTL (MCI)

RNP APCH - GPS.		MISSED APPROACH: Climb to 4000 direct DUSTN and on track 092° to LYMES and hold.	
▼ For uncompensated Baro-VNAV systems, LNAV/VNAV NA below -19°C or above 54°C. For inop ALS, increase LPV all Cats and LNAV/VNAV all Cats visibility to RVR 4500, and increase LNAV Cats C/D visibility to 1½ SM.		MALSR	
D-ATIS 128.375	KANSAS CITY APP CON 120.95 318.1	INTERNATIONAL TOWER 128.2 254.25	GND CON 121.8
		CLNC DEL 135.7	CPDLC



NC-3, 08 AUG 2024 to 05 SEP 2024

NC-3, 08 AUG 2024 to 05 SEP 2024



CATEGORY	A	B	C	D
LPV DA	1316/40		300 (300-¾)	
LNAV/VNAV DA	1319/40		303 (300-¾)	
LNAV MDA	1480/24 464 (500-½)		1480/50 464 (500-1)	
CIRCLING	1540-1 513 (600-1)		1540-1½ 513 (600-1½) 1580-2 553 (600-2)	