

(TIFTO8.MCI) 23278

# TIFTO EIGHT DEPARTURE

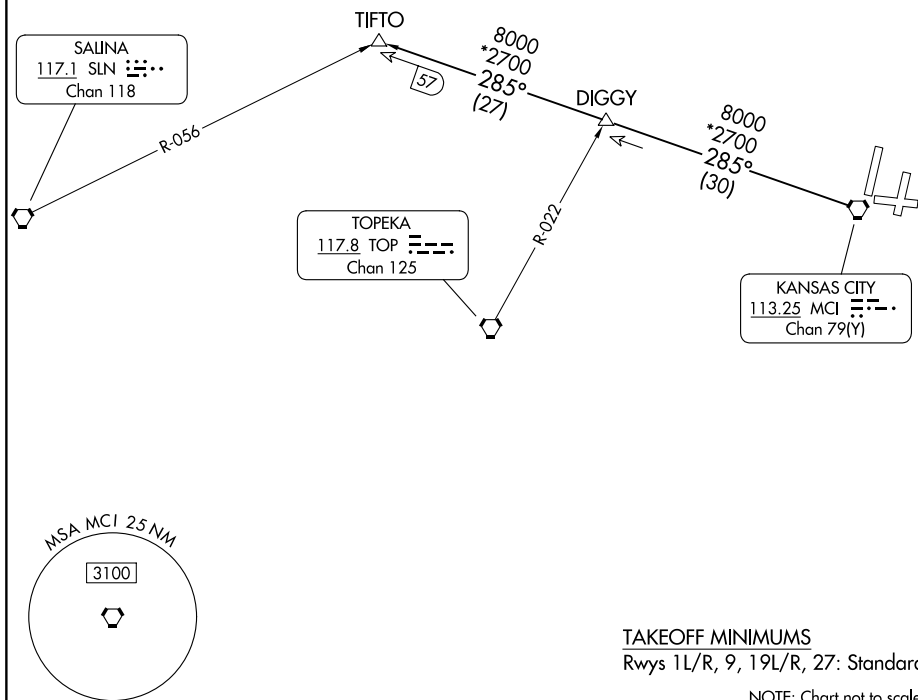
AL-780 (FAA)

KANSAS CITY INTL (MCI)  
KANSAS CITY, MISSOURI

**TOP ALTITUDE:  
10000**

RADAR and DME required.

KANSAS CITY DEP CON  
124.7 284.7  
D-ATIS  
128.375  
CLNC DEL  
135.7



NC-3, 08 AUG 2024 to 05 SEP 2024

NC-3, 08 AUG 2024 to 05 SEP 2024

**TAKEOFF MINIMUMS**  
Rwys 1L/R, 9, 19L/R, 27: Standard.

NOTE: Chart not to scale.



## DEPARTURE ROUTE DESCRIPTION

**TAKEOFF ALL RUNWAYS:** Climb on assigned heading for RADAR vectors to appropriate route. Maintain 10000, expect filed altitude 10 minutes after departure.

**TIFTO TRANSITION (TIFTO8.TIFTO):** From over MCI VORTAC on MCI R-285 to TIFTO.

# TIFTO EIGHT DEPARTURE

(TIFTO8.MCI) 05OCT23

KANSAS CITY, MISSOURI  
KANSAS CITY INTL (MCI)