


LOC/DME I-JEF 110.5 Chan 42	APP CRS 300°	Rwy Idg 6000 TDZE 549 Apt Elev 549
---	------------------------	--

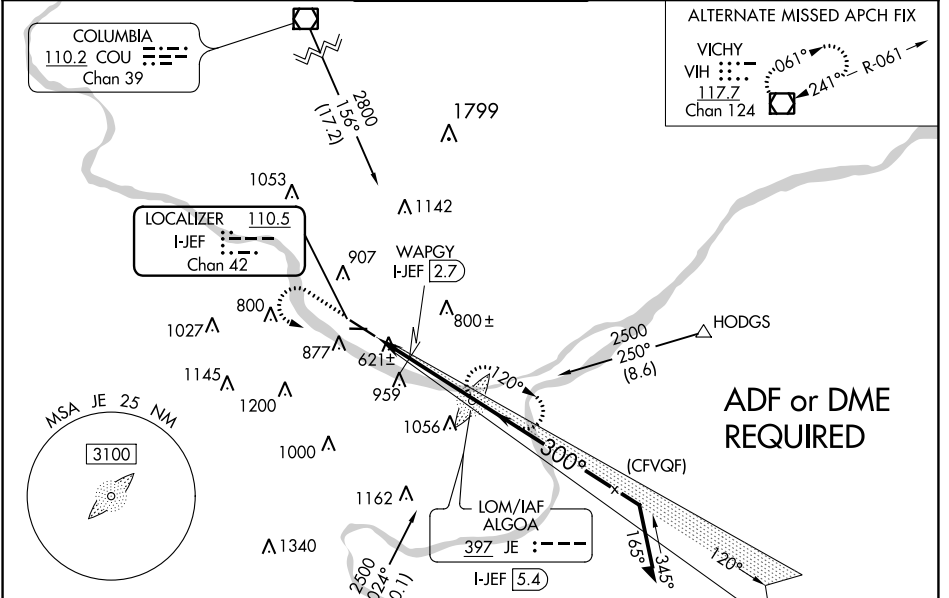
ILS or LOC RWY 30

JEFFERSON CITY MEML (JEF)



⚠ ADF required. When local altimeter setting not received, use Columbia altimeter setting and increase all DA/MDA 80 feet, and increase S-LOC 30 visibility Cats C/D 3/4 SM and increase S-LOC 30 WAPGY fix minimums visibility and Circling Cats A/B/C 1/4 SM. VDP NA with Columbia altimeter setting. For inop ALS when using Columbia altimeter setting, increase S-ILS 30 visibility all Cats to 3/4 SM and S-LOC 30 visibility Cats C/D to 1 3/4 SM and S-LOC 30 WAPGY fix minimums, visibility Cats C/D to 1 1/4 SM. Circling Rwy 9 NA at night.



MALSR  **MISSED APPROACH:** Climb to 1500 then climbing left turn to 2500 direct ALGOA LOM and hold.

ASOS 133.625	MIZZU APP CON 124.375 353.925	JEFFERSON CITY TOWER* 125.6 (CTAF) 	GND CON 121.7	UNICOM 122.95
------------------------	---	--	-------------------------	-------------------------



ELEV 549	TDZE 549
-----------------	-----------------

HIRL Rwy 12-30 
 MIRL Rwy 9-27
 REIL Rws 9, 12, and 27 

1500	2500	JE	JE LOM I-JEF 5.4	VGSI and ILS glidepath not coincident (VGSI Angle 3.00/TCH 50). Remain within 10 NM
*1160 when using Columbia altimeter setting. WAPGY I-JEF 2.7			1956	2500
		I-JEF 1.2	1080*	2000
	1.5 NM	2.7 NM		GS 3.00° TCH 54
CATEGORY	A	B	C	D
S-ILS 30	749-1/2		200 (200-1/2)	
S-LOC 30	1080-1/2 531 (600-1/2)		1080-1 531 (600-1)	
 CIRCLING	1320-1 771 (800-1)		1320-2 1/4 771 (800-2 1/4) 1560-3 1011 (1100-3)	
WAPGY FIX MINIMUMS				
S-LOC 30	880-1/2 331 (400-1/2)			
 CIRCLING	1320-1 771 (800-1)		1320-2 1/4 771 (800-2 1/4) 1560-3 1011 (1100-3)	

NC-3, 08 AUG 2024 to 05 SEP 2024

NC-3, 08 AUG 2024 to 05 SEP 2024