

WAAS CH <b>86410</b> <b>W30A</b>	APP CRS <b>300°</b>	Rwy Idg TDZE Apt Elev	<b>6000</b> <b>549</b> <b>549</b>
--	------------------------	-----------------------------	---

# RNAV (GPS) RWY 30

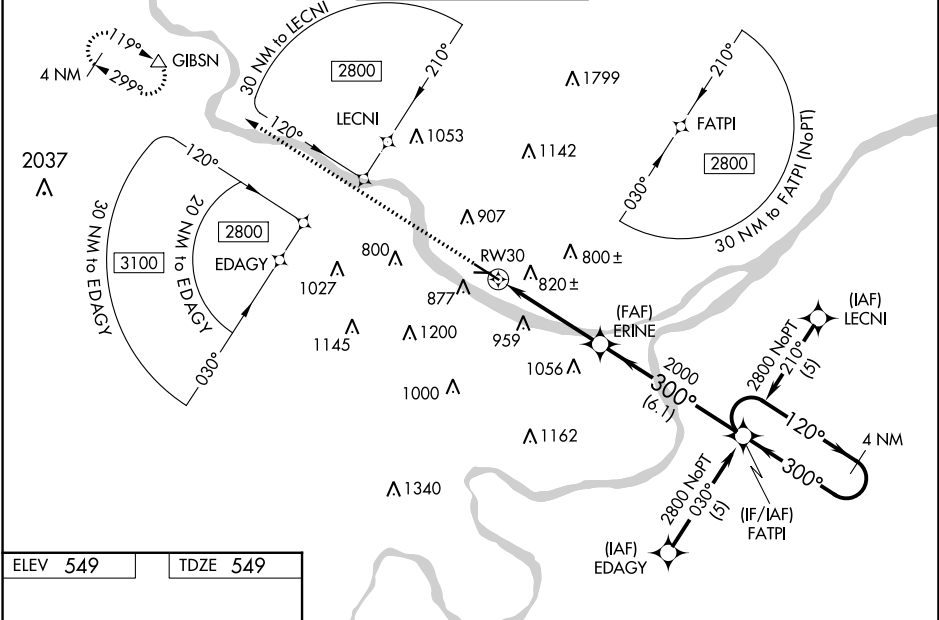
JEFFERSON CITY MEML (JEF)

**⚠** For uncompensated Baro-VNAV systems, LNAV/VNAV NA below -16°C (4°F) or above 47°C (116°F). DME/DME RNP-0.3 NA.  
**⚠** When local altimeter setting not received, use Columbia Rgnl altimeter setting and increase all DA/MDA 80 feet; increase LPV all Cats, LNAV/VNAV all Cats, LNAV Cats B, C, and D, and Circling Cats A, B and C visibility ¼ SM. For operative MALSR, when using Columbia Rgnl altimeter setting increase LPV all Cats visibility to 1¼. Baro-VNAV and VDP NA when using Columbia Rgnl altimeter setting. Circling Rwy 9 NA at night.



MISSED APPROACH: Climb to 3000 direct GIBSN and hold.

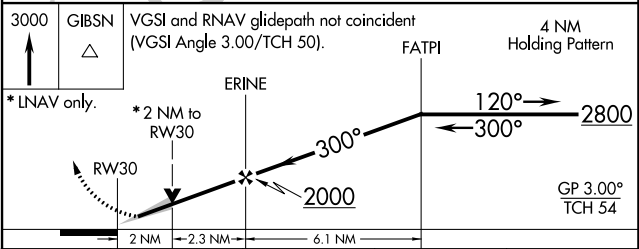
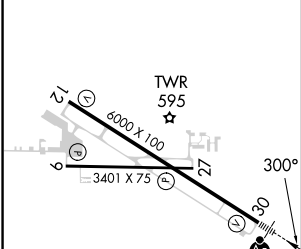
ASOS <b>133.625</b>	MIZU APP CON <b>124.375 353.925</b>	JEFFERSON CITY TOWER ★ <b>125.6 (CTAF)</b> <b>⓪</b>	GND CON <b>121.7</b>	UNICOM <b>122.95</b>
------------------------	--	--	-------------------------	-------------------------



NC-3, 08 AUG 2024 to 05 SEP 2024

NC-3, 08 AUG 2024 to 05 SEP 2024

ELEV <b>549</b>	TDZE <b>549</b>
-----------------	-----------------



CATEGORY	A	B	C	D
LPV DA	799-½ 250 (300-½)			
LNAV/VNAV DA	1322-2¼ 773 (800-2¼)			
LNAV MDA	1240-½ 691 (700-½)	1240-1½ 691 (700-½)		1240-1¾ 691 (700-1¾)
<b>C</b> CIRCLING	1320-1 771 (800-1)	1320-1¼ 771 (800-1¼)	1320-2¼ 771 (800-2¼)	1560-3 1011 (1100-3)

JEFFERSON CITY, MISSOURI  
 Orig-B 23APR20

38°35'N-92°09'W

# JEFFERSON CITY MEML (JEF)

## RNAV (GPS) RWY 30