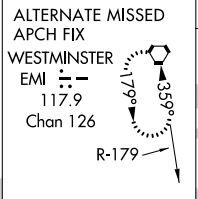
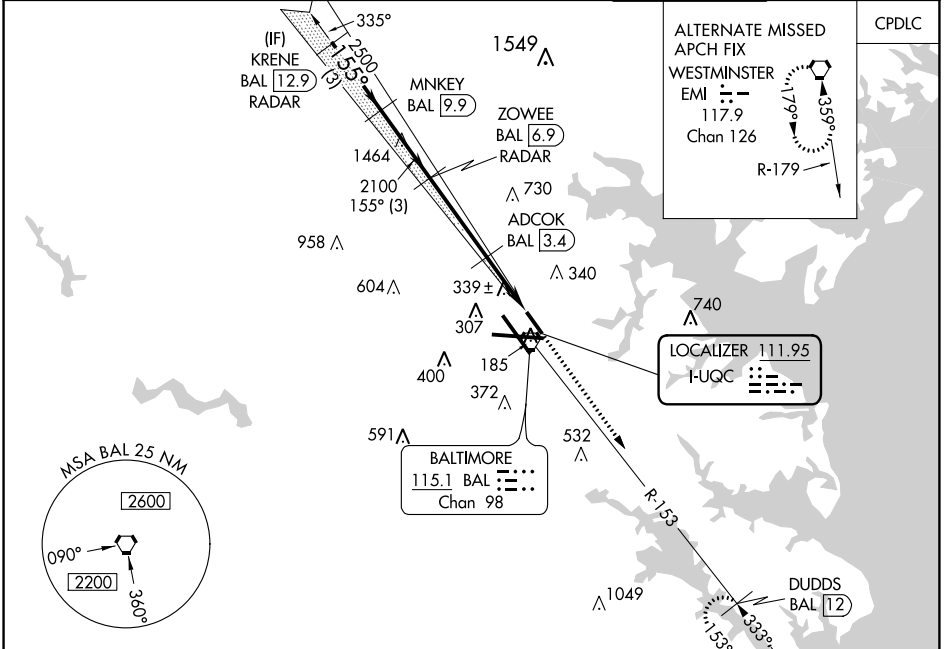


LOC I-UQC 111.95	APP CRS 155°	Rwy Idg 5000
		TDZE 142
		Apt Elev 143

BALTIMORE/
WASHINGTON INTL THURGOOD MARSHALL (BWI)
ILS or LOC RWY 15L

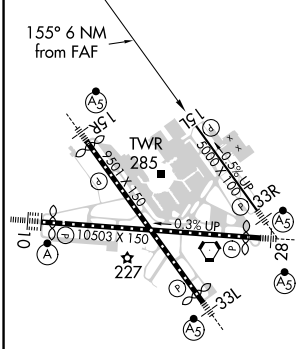
▼ DME from BAL VORTAC. Simultaneous reception of I-UQC and BAL DME required. MISSED APPROACH: Climb to 2500 on heading 155° and BAL VORTAC R-153 to DUDDS/BAL 12 DME and hold.
DME required. Simultaneous approach authorized with Rwy 15R. Helicopter visibility reduction below RVR 4000 NA.

D-ATIS 115.1 127.8	POTOMAC APP CON 119.0 282.275 (020°-100°) 124.55 317.425 (101°-130°)	119.7 290.475 (131°-180°) 128.7 307.9 (181°-019°)	BALTIMORE TOWER 119.4 257.8	GND CON 121.9	CLNC DEL 118.05
------------------------------	--	--	---------------------------------------	-------------------------	---------------------------



CPDLC
NE-3, 08 AUG 2024 to 05 SEP 2024

ELEV 143	D	TDZE 142
----------	----------	----------

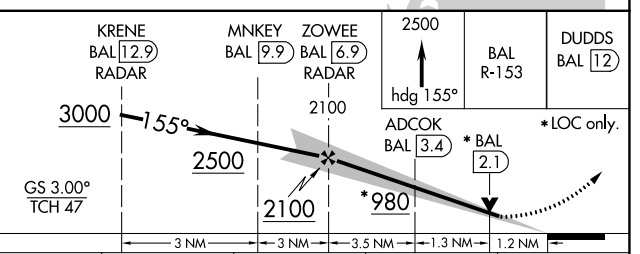


TDZ/CL Rwy 10 and 33L
REIL Rwy 15L and 33R
HIRL all Rwy

FAF to MAP 6 NM

Knots	60	90	120	150	180
Min:Sec	6:00	4:00	3:00	2:24	2:00

RADAR REQUIRED



CATEGORY	A	B	C	D
S-ILS 15L	544-1 $\frac{3}{8}$	402 (500-1 $\frac{1}{2}$)		NA
S-LOC 15L	560/55	418 (500-1)		NA
C CIRCLING	640-1 497 (500-1)	660-1 517 (600-1)		NA